

South Terrace, Weston-Super-Mare, Somerset. BS23 2AT

£210,000 Freehold

FOR SALE



www.housefox.co.uk



01934 314242
01275 404601
01278 557700
sales@housefox.co.uk

PROPERTY DESCRIPTION

2 BEDROOM HOUSE WITHIN A 5 MINUTE WALK OF THE SEA FRONT.....This individual home is set over three floors and is only a short distance from the town centre, sea front, beach, restaurants, cafes, bars and shops, and could make a great AirBnB residence.

The property is offered for sale with no onward chain and comprises hallway, lounge, kitchen, bathroom, 2 bedrooms, WC, gas central heating and small front garden.

So if your wanting a property close to the sea front or an investment, give House Fox estate agents a call

FEATURES

- WALK THROUGH 360 VIDEO TOUR AVAILABLE
- Terraced house
- 2 bedrooms
- Good size lounge
- Set over three floors
- No onward chain
- 5 minute walk to the beach and sea front
- Gas central heating
- Council Tax--C
- EPC-E



ROOM DESCRIPTIONS

GROUND FLOOR LEVEL:

Main front door to the hallway:

Hallway:

Stairs down to the lower ground level, door to the lounge

Lounge:

17' 5" x 13' 0" (5.31m x 3.96m) Laminate flooring, window to the front, two radiators, spotlights, stairs to the first floor

LOWER LEVEL:

Kitchen:

17' 1" MAX x 12' 4" (5.21m x 3.76m) Sink unit, built in oven and hob, floor units, boiler, 2 double glazed windows

Bathroom:

Bath, shower over, wash hand basin

Separate WC

Low level WC

FIRST FLOOR:

Bedroom 1:

14' 7" x 13' 0" (4.45m x 3.96m) 14' 7" x 13' 0" (4.45m x 3.96m) Window, radiator

Bedroom 2:

11' 0" x 8' 4" (3.35m x 2.54m) Radiator, window

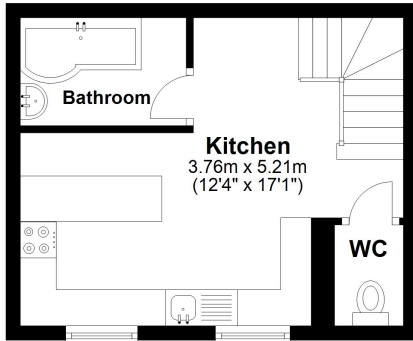
Garden:

To the front is a small garden area, laid to stone chippings

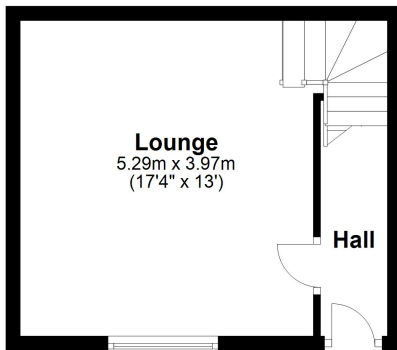


FLOORPLAN & EPC

Lower Ground Floor



Ground Floor



First Floor

