



DERBYSHIRE
PROPERTIES
SALES & LETTINGS
FOR SALE
01773 61983



Church Street, Horsley, Derby DE21 5BQ
£450,000 - Freehold

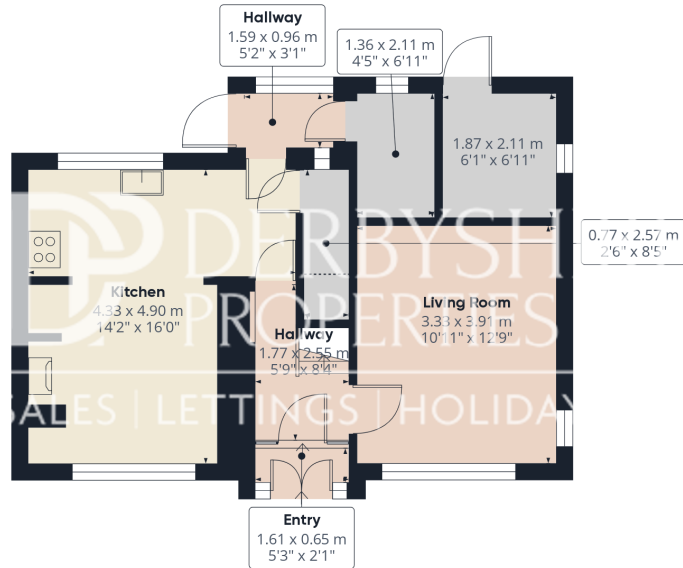


PROPERTY DESCRIPTION

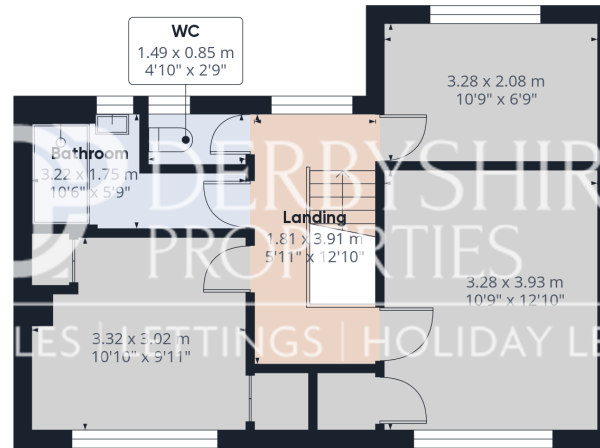
Derbyshire Properties are delighted to introduce this three bedroom detached family home located on a sizable plot position in the highly regarded village of Horsley. The property briefly comprises of :- entrance porch, entrance hall, sitting room, kitchen/dining room, pantry, rear hallway, storeroom and external storeroom. To the first floor a landing provides access to 3 bedrooms, shower room and separate WC. Externally the property is located on a large plot that offers the potential to extend in all directions (subject to planning permissions). We believe the property will attract interest from families and an internal inspection should be undertaken immediately .

POINTS OF INTEREST

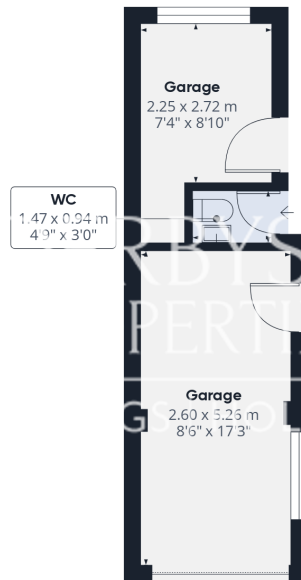
- Detached House
- Large Garden
- Potential For Development
- Sought After Village Location
- 3 Bedrooms, 1 Reception Room
- Shower Room
- No Chain
- Viewing Advised
- COUNCIL TAX BAND E



Ground Floor Building 1



Floor 1 Building 1



Ground Floor Building 2

Approximate total area⁽¹⁾

110.3 m²
1187.23 ft²

Reduced headroom

0.56 m²
6.04 ft²

(1) Excluding balconies and terraces

Reduced headroom
..... Below 1.5 m/5 ft

While every attempt has been made to ensure accuracy, all measurements are approximate, not to scale. This floor plan is for illustrative purposes only.

Calculations are based on RICS IPMS 3C standard.

GIRAFFE360