

FOR  
SALE



1 Court View, Allensmore, Hereford HR2 9AE

£299,995 - Freehold

22, Broad Street, Hereford, HR4 9AP 01432 355455 [hereford@flintandcook.co.uk](mailto:hereford@flintandcook.co.uk)



## PROPERTY SUMMARY

Situated south-west of Hereford City in the village of Allensmore, a charming two bedroom semi detached cottage offering ideal accommodation for first time buyers or for those looking to downsize. With two double bedrooms & full bathroom to the first floor, a spacious lounge, kitchen/dining room and conservatory to the ground floor. To the outside, a single garage, a good sized garden, ample parking and fantastic countryside views. A viewing is highly recommended.

## POINTS OF INTEREST

- *Two double bedrooms*
- *Semi detached cottage*
- *Garage, parking and good sized garden*
- *Must be viewed!*
- *Fantastic countryside views*
- *Oil central heating & part triple glazed*



## ROOM DESCRIPTIONS

### Ground floor

Canopy porch with entrance door into

### Entrance hall

With fitted carpet, fitted wall light, window to the side aspect and opening into the

### Living room

With fitted carpet, two radiators, four wall lights, triple glazed window to the front aspect, door with carpeted stairs leading to the first floor, feature wood burning stove with brick surround and tiled hearth, an opening then leads into the

### Kitchen/dining room

Fitted with matching wall and base units, ample work surface space over, 1 1/2 bowl sink and drainer unit, four ring gas hob (lpg), integrated oven and microwave, oil fired aga, integrated larder fridge & freezer, integrated dishwasher and washing machine, tiled splash backs, double glazed window, ample space for dining, wall mounted fuse box, useful pantry cupboard and door leading into the

### Conservatory

With tiled floor, radiator, wall light, power points, double glazed windows, floor mounted oil central heating boiler and door out to the rear garden.

### First floor landing

With fitted carpet, ceiling light point, smoke alarm and doors to

### Bedroom 1

A spacious main bedroom with fantastic countryside views to the rear with fitted carpet, recess spotlights, radiator, double glazed window, built in wardrobes and loft hatch.

### Bedroom 2

With fitted carpet, recess spotlights, radiator, triple glazed window to the front aspect and built in storage cupboard.

### Bathroom

A full suite comprising panelled bath with part tiled surround, double width walk in shower with glass sliding door, tiled surround and mains fitment shower head over, low flush w/c, pedestal wash hand basin, heated towel rail, tiled floor, recessed spotlights, double glazed window and inbuilt airing cupboard.

### Outside

To the rear there is a fantastic patio area perfect for entertaining and a glorious suntrap with views towards open countryside. Steps and a paved pathway provide access to the remainder of the garden which is laid to lawn and stocked with an array of ornamental plants and shrubs with numerous vegetable beds, a greenhouse, wooden storage sheds and enclosed by hedging and fencing. There is a paved path to the rear of the property where you will find an outside tap, wood store and the lpg gas bottles for the hob. There is access to the rear of the garage and gate to the front. The garage has an up and over door to the front, light and power, a mezzanine storage area and personal door to the rear. Oil tank. To the front a concrete driveway with carport providing off road parking with further parking available to the front.

### Services

Mains water, electricity and drainage are connected. Oil-fired central heating. Telephone (subject to transfer regulations).

### Outgoings-

Council tax band C - £2121.13 for 2025/2026

Water and drainage rates are payable.

### Viewings-

Strictly by appointment through the Agent, Flint & Cook, Hereford (01432) 355455.

### Opening Hours

Monday - Friday 9.00 am - 5.30 pm

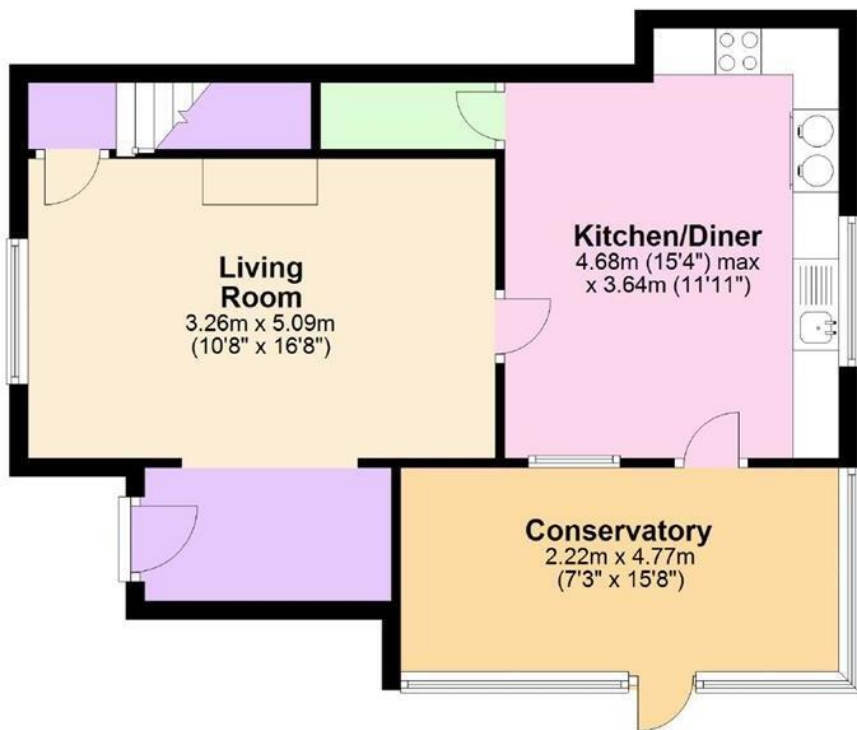
Saturday 9.00 am - 1.00 pm

### Money Laundering Regulations-

Prospective purchasers will be asked to produce identification, address verification and proof of funds at the time of making an offer.

## Ground Floor

Approx. 52.7 sq. metres (566.9 sq. feet)



## First Floor

Approx. 38.8 sq. metres (417.6 sq. feet)



Total area: approx. 91.5 sq. metres (984.5 sq. feet)

For illustration only - Not guaranteed to scale  
Plan produced using PlanUp.

These particulars are prepared for the guidance only of prospective purchasers. They are intended to give a fair and overall description of the property and do not constitute the whole or any part of an offer or contract. Any information contained herein (whether in text, plans or photographs) is given in good faith but should not be relied upon as being a statement or representation of fact. Any plans provided by the agents and/or with the sales particulars are intended for guidance purposes only; we cannot guarantee the accuracy and scale of any plans, and they do not form any part of the sales contract. Nothing in these particulars shall be deemed to be a statement that the property is in good condition or otherwise nor that any services or facilities are in good working order. Any movable contents, fixtures and fittings, (whether wired or not) referred to in these property particulars (including any shown in the photographs) are, unless the particulars say otherwise, excluded from the sale. In the event that the buyer proposes to purchase any movable contents or include them in any offer for the property, the buyer cannot in any respect imply any such inclusion from the property particulars. Any areas, measurements or distances referred to herein are approximate only and may be subject to amendment. It should not be assumed that the property has all necessary planning, building regulation or other consents and these matters must be verified by an intending purchaser. The information in these particulars is given without responsibility on the part of the agents or their clients and neither the agents nor their employees have any authority to make or give any representations or warranties whatever in relation to this property.

**Flint & Cook Privacy Statement:** We take your privacy very seriously. Your data will not be shared with any other parties without your express permission. Our Data protection Policy can be read in full on the Flint & Cook website, [www.flintandcook.co.uk](http://www.flintandcook.co.uk)

Energy Efficiency Rating		
	Current	Potential
Very energy efficient - lower running costs		
(92+) <b>A</b>		100
(81-91) <b>B</b>		
(69-80) <b>C</b>		
(55-68) <b>D</b>		
(39-54) <b>E</b>		
(21-38) <b>F</b>		
(1-20) <b>G</b>		
Not energy efficient - higher running costs		
England, Scotland & Wales		EU Directive 2002/91/EC