

FOR SALE

£309,995 Freehold



27 Gill Crescent, Taunton, TA1 4NR

£309,995
Freehold

- Well Presented Three Bedroom Semi-Detached Family Home
- Easy Access to Musgrove Park Hospital & Taunton Town Centre
- Popular Galmington Location
- Featured extension with Bi-Fold Doors
- Modern Fitted Kitchen/Diner
- White Suite Bathroom
- Low Maintenance Garden with Decking
- Large Storage Shed
- Driveway



PROPERTY DESCRIPTION

Newton King are delighted to offer to the market, this well presented and extended three-bedroom semi-detached house situated in the highly sought-after Galmington area of Taunton. Offering a perfect blend of modern living and comfortable family space, this property is ideal for those looking for a spacious family home in a popular location. The property is also within easy reach of Musgrove Park Hospital & Taunton town centre, providing excellent accessibility to all local amenities.

The property benefits from a well proportioned layout throughout and to the downstairs comprises; Entrance hall, downstairs WC, modern fitted kitchen/diner, two generously sized light & airy reception rooms including a fantastic extension with bi-fold doors. Upstairs, you will find a white suite family bathroom, two double bedrooms and further single/office room, the master bedroom benefits from built-in wardrobes providing ample storage options.

Outside to the rear of the property, the garden is designed for ease of maintenance and is complete with a decking area & lawn. Additionally, there is a storage shed offering practical storage space. To the front, you will find the driveway which accommodates parking for multiple vehicles.

EPC rating D, council tax band C. Gas central heating & UPVC double glazing.

Please contact Newton King on 01823259753 between the hours of 9am-6pm to arrange a fully accompanied viewing.

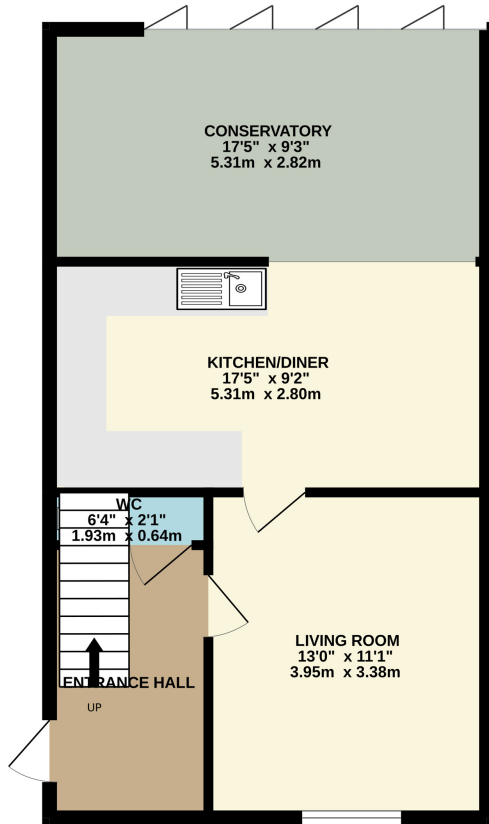




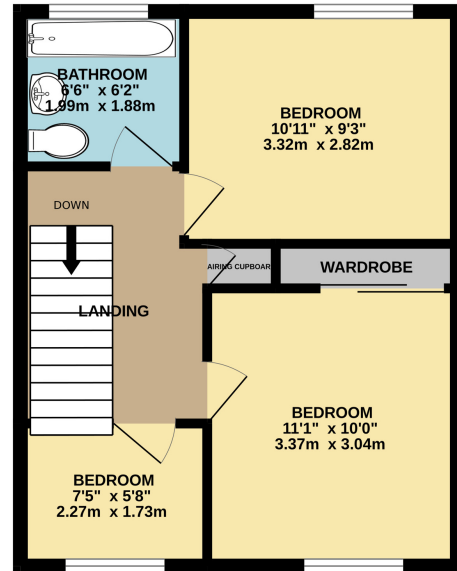
FLOORPLAN

Newton King

GROUND FLOOR
547 sq.ft. (50.8 sq.m.) approx.



1ST FLOOR
385 sq.ft. (35.7 sq.m.) approx.



TOTAL FLOOR AREA : 932 sq.ft. (86.5 sq.m.) approx.

Whilst every attempt has been made to ensure the accuracy of the floorplan contained here, measurements of doors, windows, rooms and any other items are approximate and no responsibility is taken for any error, omission or mis-statement. This plan is for illustrative purposes only and should be used as such by any prospective purchaser. The services, systems and appliances shown have not been tested and no guarantee as to their operability or efficiency can be given.
Made with Metropix ©2026

Taunton
53, East Street, Taunton, TA1 3NA
01823 259753
taunton@newtonking.co.uk