



13 Farm Road, Staines-upon-Thames, Surrey. TW18 2RB.

2 Bedroom Semi-Detached Bungalow - £475,000 Freehold

13 Farm Road, Staines-upon-Thames, Surrey. TW18 2RB.

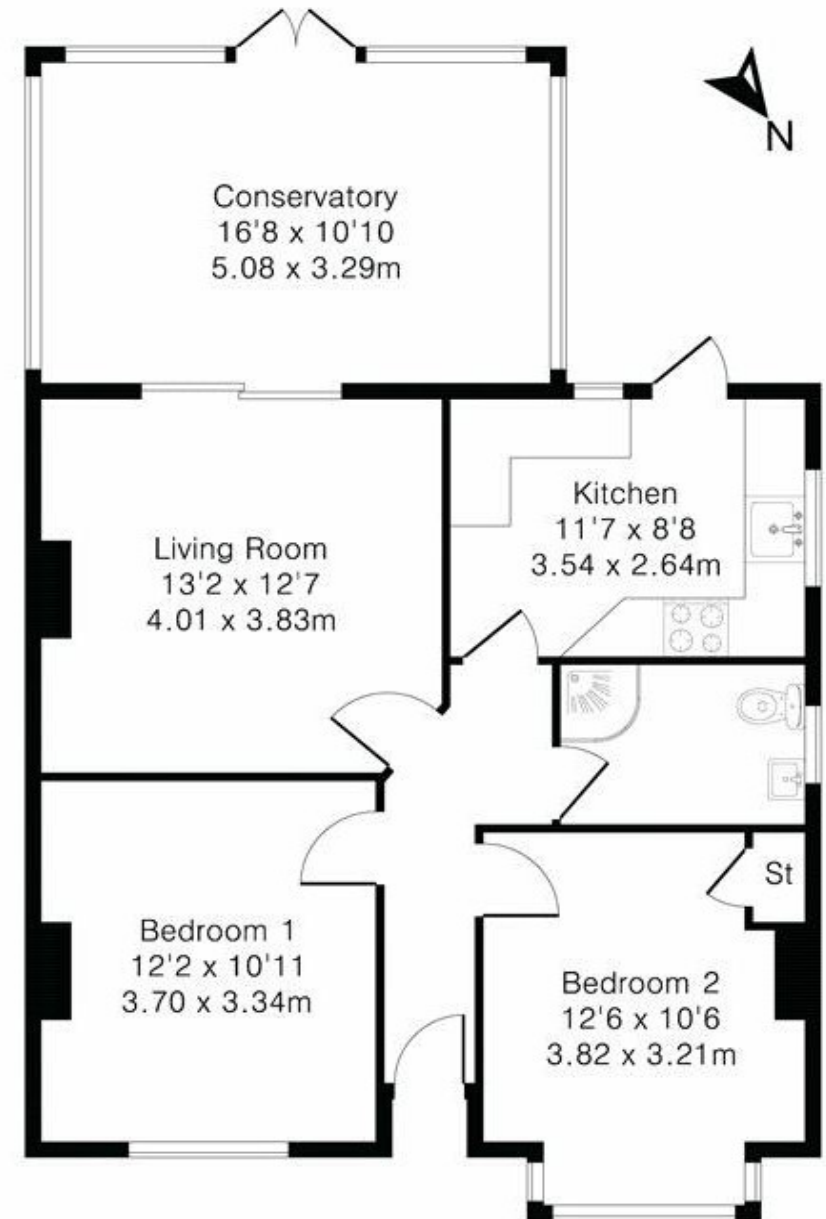
01784 451458

2 Bedroom Semi-Detached Bungalow - £475,000 Freehold

WELL PRESENTED & SPACIOUS TWO BEDROOM SEMI-DETACHED BUNGALOW SITUATED ALONG THIS MUCH SOUGHT AFTER NO-THROUGH ROAD IDEALLY POSITIONED FOR STAINES TOWN CENTRE, LOCAL SHOPS & MAINLINE TRAIN STATION. The property benefits from a spacious lounge/diner, separate modern fitted kitchen, conservatory, two double bedrooms, modern white shower room, large secluded rear garden and off-street parking. Viewings Highly Recommended!

Key Features

**SEMI-DETACHED BUNGALOW
WELL PRESENTED THROUGHOUT
SPACIOUS ROOMS
OFF-STREET PARKING
LARGE SECLUDED REAR GARDEN
SOUGHT AFTER NO-THROUGH ROAD**



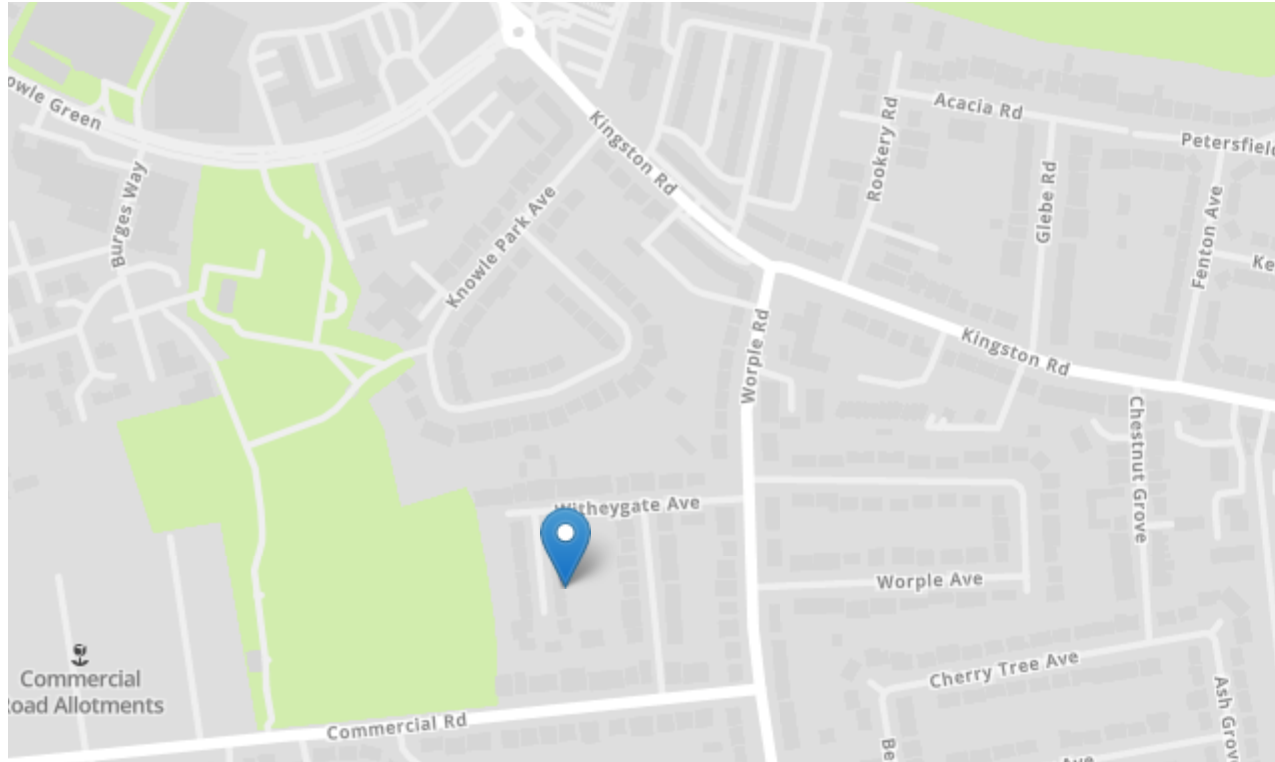
GREGORY BROWN
RESIDENTIAL SALES & LETTINGS





13 Farm Road, Staines-upon-Thames, Surrey. TW18 2RB.

gregory-brown.co.uk



Tenure **Freehold**
Lease Term
Ground Rent
Service Charge
Local Authority
Council Tax

We have prepared these property particulars as a general guide to a broad description of the property. They are not intended to constitute part of an offer or contract. We have not carried out a structural survey and the services, appliances and specific fittings have not been tested. All photographs, measurements, floorplans and distances referred to are given as a guide only and should not be relied upon for the purchase of carpets or any other fixtures or fittings. Lease details, service charges and ground rents (where applicable) and council tax are given as a guide only and should be checked and confirmed by your solicitor prior to exchange of contracts. The copyright of all details, photographs and floorplans remain exclusive to Gregory Brown.

