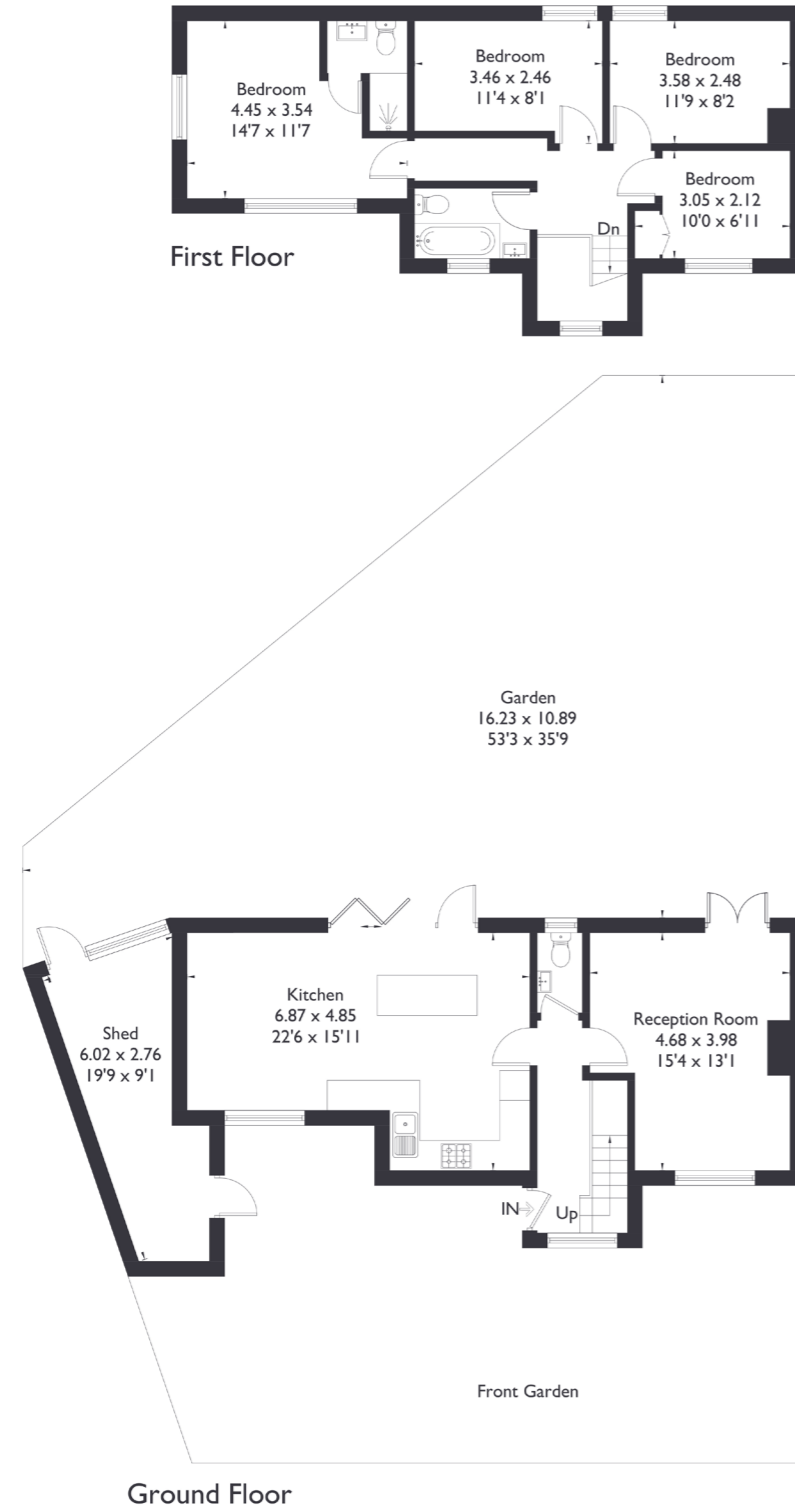


Clayton Crescent Brentford, TW8

Approximate Floor Area = 109.1 sq m / 1174 sq ft
(Excluding Shed)



4 BEDROOM HOUSE

Clayton Crescent, TW8
GUIDE PRICE £875,000

This charming four bedroom property is situated in a fantastic location, perfect for families and professionals alike. The home features a spacious open plan kitchen and living area, ideal for modern living and entertaining, along with a separate reception room for additional space. The kitchen opens up to a beautiful southwest facing garden, offering plenty of sunlight and a lovely outdoor retreat.

FEATURES

- Four Bedrooms
- One Bathroom / Downstairs W/C
- Open Plan Kitchen Dining
- Underfloor Heating
- Off Street Parking
- Mount Carmel Catholic Primary School
- EPC Rating E



4 BEDROOM HOUSE

Clayton Crescent, TW8

Upstairs you will find four generously sized bedrooms, each capable of accommodating a double bed ensuring ample space and comfort.

The property is filled with natural light throughout, creating a bright and welcoming atmosphere. Additionally, the property includes a downstairs W/C adding to its practicality and appeal.

Conveniently located within the catchment area for Mount Carmel Catholic Primary School, this home is also just a 10 minute walk from both South Ealing and Brentford stations, making it perfect for commuters. Additionally, the property is close to the Great West Road, providing fantastic access for those who need to drive into London.

EPC Rating E.

