

15 Houston Way,

Frome, BA11 3EU

COOPER
AND
TANNER



£350,000 Freehold

15 Houston Way is a charming 3-bedroom end-of-terrace house, brimming with potential and situated in popular street in the picturesque town of Frome. This red brick home offers a unique opportunity for those looking to create their dream family property, within easy walking distance of several schools.

15 Houston Way, Frome, BA11 3EU

 3  1  1 EPC C

£350,000 Freehold

DESCRIPTION.

As you approach the property, you will be greeted by its classic red brick exterior with front bay window, exuding character and charm. The property is accessed by a gated path from the road and the front garden has been lovingly maintained and features a range of established flowering plants.

The house features spacious living areas, including a generously sized living room and dine-in kitchen. Double doors open onto a garden patio, which benefits from midday sun and is a perfect space for al-fresco dining. Beyond the kitchen is an extension housing a utility space/boot room, downstairs WC and a workshop/laundry space, which could be reconfigured to suit a variety of purposes.

Upstairs you will find three well-proportioned bedrooms, two doubles and a decent single, offering ample space for a growing family or for those who desire a home office. There is a good-sized upstairs shower room, and the loft may have conversion potential, subject to the usual planning consents. The property benefits from natural light throughout, providing a warm and inviting atmosphere. Further benefits include the roof being recently re-tiled, a new boiler and double glazing installed throughout.

OUTSIDE

One of the standout features of this property is the beautiful south facing garden. Lovingly maintained, the garden offers a peaceful retreat with mature plants and greenery, perfect for relaxing or entertaining. There is a gated driveway to the rear offering off street parking for around five cars. Free on-street parking is also available to the front of the property. There is also currently a large garden shed to the side of the property, and several established fruit trees with impressive yields.

ADDITIONAL INFORMATION

Gas fired central heating.

LOCATION

Nestled in the historic town of Frome, this home is conveniently located close to local amenities, schools, and transport links. Frome's vibrant community and rich cultural scene make it an ideal place to call home. Enjoy the blend of old-world charm and modern conveniences, with local markets, boutique shops, and delightful cafes just a short stroll away.

AGENT'S NOTE

This property is being sold as seen and is offered with no onward chain. Early viewings recommended.

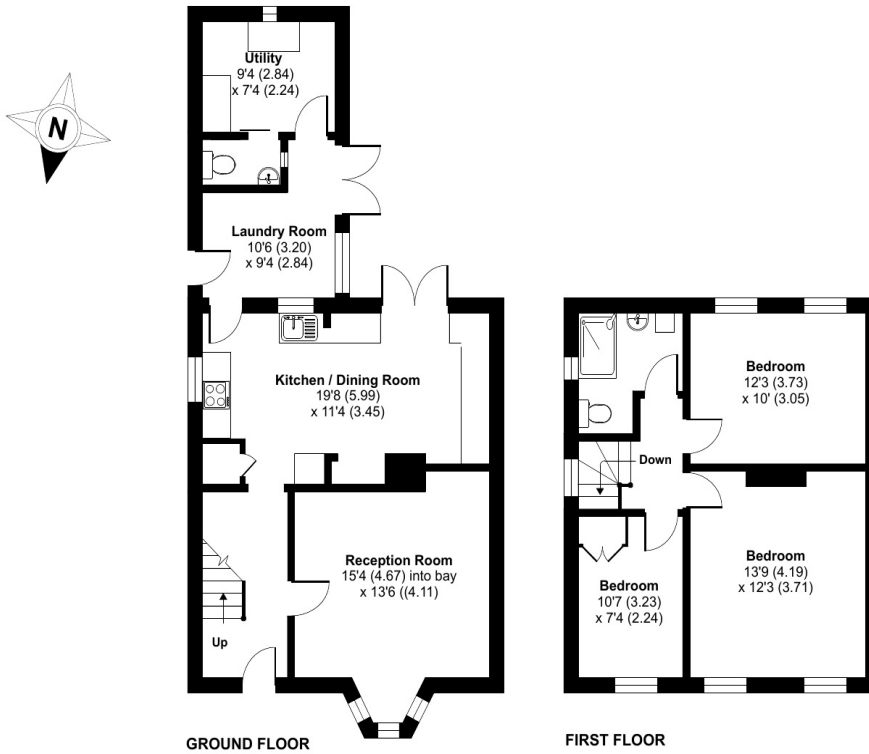




Houston Way, Frome, BA11

Approximate Area = 1168 sq ft / 108.5 sq m

For identification only - Not to scale



Floor plan produced in accordance with RICS Property Measurement Standards incorporating International Property Measurement Standards (IPMS2 Residential). © nitchecom 2024. Produced for Cooper and Tanner. REF: 1158564



FROME OFFICE

Telephone 01373 455060

6 The Bridge, Frome, Somerset, BA11 1AR

frome@cooperandtanner.co.uk

**COOPER
AND
TANNER**

Important Notice: These particulars are set out as a general outline only for the guidance of intended purchasers and do not constitute, nor constitute part of, an offer or contract. All descriptions, dimensions, reference to condition and necessary permissions for use and occupation, warranties and other details are given without responsibility and any intending purchasers should not rely on them as statements or representations of fact but must satisfy themselves by inspection or otherwise as to the correctness of each of them.

