



## Wratten Road West

Hitchin | Hertfordshire | SG5 2EJ

[www.stonegate-estates.co.uk](http://www.stonegate-estates.co.uk)



# WRATTEN ROAD WEST

## Property Description

Presented in beautiful condition sits this ground floor two bedroom ex show apartment in the recently built and exclusive Churchill Development close to the town centre.

The accommodation benefits from high specification fittings throughout including a cupboard off the entrance hall, a fully fitted kitchen with built-in appliances, a good size lounge with a door to its own patio area overlooking one of the communal gardens, a very good size double bedroom with a walk-in wardrobe offering ample shelving and hanging space. The shower room has fitted cupboards and vanity unit and a walk-in glass shower cubicle. There is a further double bedroom and a bathroom with high end fittings.

Other benefits include the communal lounge area with coffee bar/kitchen and very well stocked and kept communal gardens to enjoy along with parking for residents.

Dovehouse Lodge is managed by Millstream Management Services and works closely with Churchill Retirement Living who built the development and provides a manager on site 5 days a week as well as a 24 hours, 365 days a year service by the Careline team.

Rarely available as a re-sale apartment we strongly recommend a viewing of this beautiful apartment.

**£520,000 Leasehold**





Approximate Gross Internal Area  
75.4 sq m / 811 sq ft

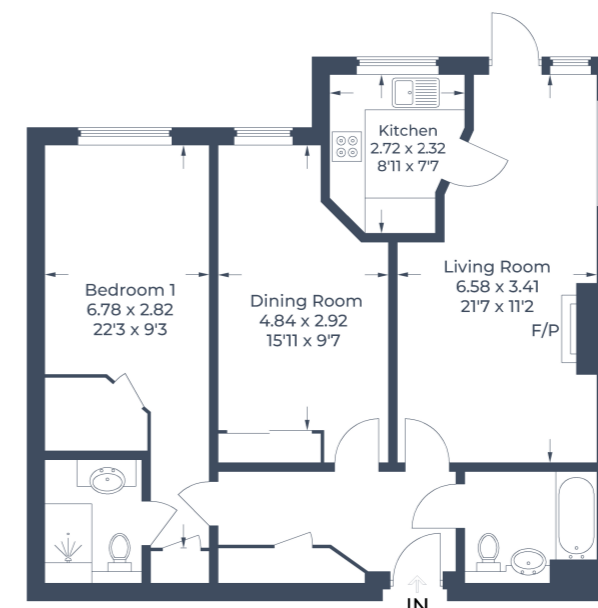


Illustration for identification purposes only,  
measurements are approximate, not to scale.  
© C3 Property Marketing Produced for Stonegate Estates



- Two Bedroom Retirement Apartment
- Ground Floor
- Ex Show Apartment
- Patio Area
- Dressing Room to Master
- Resident House Manager
- Residence Lounge & Coffee Bar
- Parking
- Town Centre Location

EPC Rating: B

## Stonegate Estate Agents

01462 438979

[sales@stonegate-estates.co.uk](mailto:sales@stonegate-estates.co.uk) | [www.stonegate-estates.co.uk](http://www.stonegate-estates.co.uk)

