



Littlebrook Gardens, Cheshunt,  
Waltham Cross, Hertfordshire.  
EN8 8QQ





£950,000

Freehold

Woodhouse are pleased to offer this substantial & gated Chalet Bungalow tucked away in the ever-desirable Grange Neighbourhood.

Set on a large corner plot and beautifully upkept over the years, there is plenty of space set over two floors. To the Ground Floor there is a Through-Lounge with Dining area, a Sunroom & the Kitchen-Diner.

The Ground floor also has 3 x Double Bedrooms and a Family Bathroom. Two of the Bedrooms have En-suites. There is also access to the Integral Garage and a Utility Room with Kitchenette facilities.

Going upstairs, there are the 4th and 5th Bedrooms as well as another Family Bathroom. Externally to the rear there is a low-maintenance Garden and to the front a large Carriage Driveway for multiple vehicles. The whole Bungalow is set behind private gates.



WOOD  
PROPERTY C



**Lounge / Dining**

7m x 4m (23' 0" x 13' 1")

**Sun Room**

4.5m x 4.2m (14' 9" x 13' 9")

**Kitchen-Diner**

5.6m x 4m (18' 4" x 13' 1")

**Bedroom 1 (upstairs)**

5.3m x 4m (17' 5" x 13' 1")

+ eaves / walk-in

**Bedroom 2 (upstairs)**

5.2m x 3.5m (17' 1" x 11' 6")

**Family Bathroom (upstairs)**

4.6m x 2m (15' 1" x 6' 7")

**Bedroom 3 (ground floor)**

4.3m x 4m (14' 1" x 13' 1")

**Ensuite**

3.3m x 1.5m (10' 10" x 4' 11")

**Bedroom 4 (ground floor)**

3.6m x 2.3m (11' 10" x 7' 7")

**En-suite**

3m x 1.3m (9' 10" x 4' 3")

**Bedroom 5**

3.2m x 2.8m (10' 6" x 9' 2")

**Integral Garage**

5m x 2.5m (16' 5" x 8' 2")

**Utility Room / Kitchenette**

5m x 1.5m (16' 5" x 4' 11")

**OUTSIDE**

Front:-

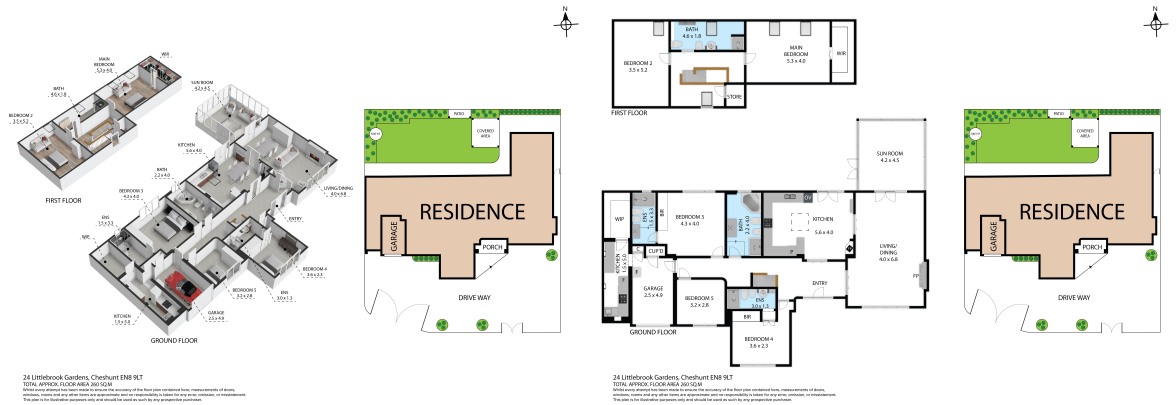
Gated Entrance

Carriage Driveway

Parking for multiple vehicles

Rear:-

Low-maintenance Garden



Energy Efficiency Rating		
	Current	Potential
<i>Very energy efficient - lower running costs</i>		
(92+) <b>A</b>		
(81-91) <b>B</b>		
(69-80) <b>C</b>	73	81
(55-68) <b>D</b>		
(39-54) <b>E</b>		
(21-38) <b>F</b>		
(1-20) <b>G</b>		
<i>Not energy efficient - higher running costs</i>		
<b>England, Scotland &amp; Wales</b>		EU Directive 2002/91/EC 