

Truuli



93 Abercairn Road, London, SW16 5AF

£525,000 Freehold

- No onward chain
- Decking in the rear garden
- Solid wood flooring in majority of the rooms
- Same family has lived in house for over 20 years
- Potential for off street parking (subject to planning)
- Well maintained and presented throughout

Southbridge Place, Surrey, CR0 4HA

Tel: 0330 043 0002

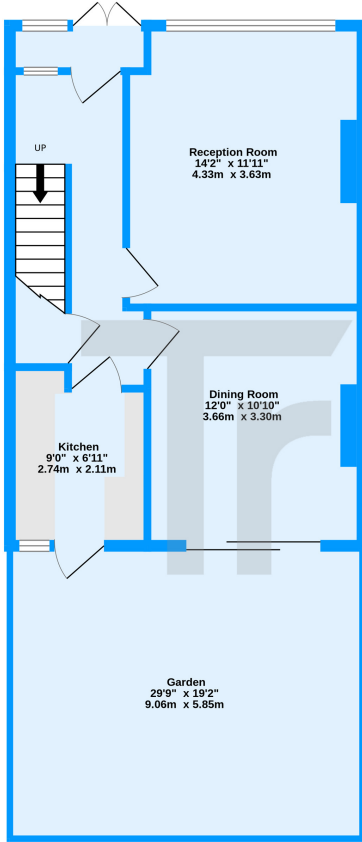
Email: save@truuli.co.uk Web: www.truuli.co.uk

93 Abercairn Road, London, SW16 5AF

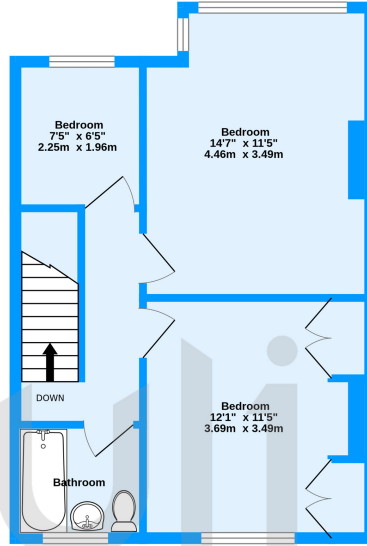
£525,000 Freehold

Set in a highly desirable location is this lovely three-bedroom family home, offering ample living and entertaining space. There is also the potential to extend subject to relevant planning and consent. There is a spacious reception room, a separate dining, three decent-sized bedrooms, a family bathroom and a large private rear garden.

Ground Floor
458 sq.ft. (42.6 sq.m.) approx.



1st Floor
448 sq.ft. (41.6 sq.m.) approx.



Abercairn Road, Streatham, SW16
TOTAL FLOOR AREA: 906 sq.ft. (84.2 sq.m.) approx.
Measurements are approximate. Not to scale. Illustrative purposes only
Made with Metropix ©2024

