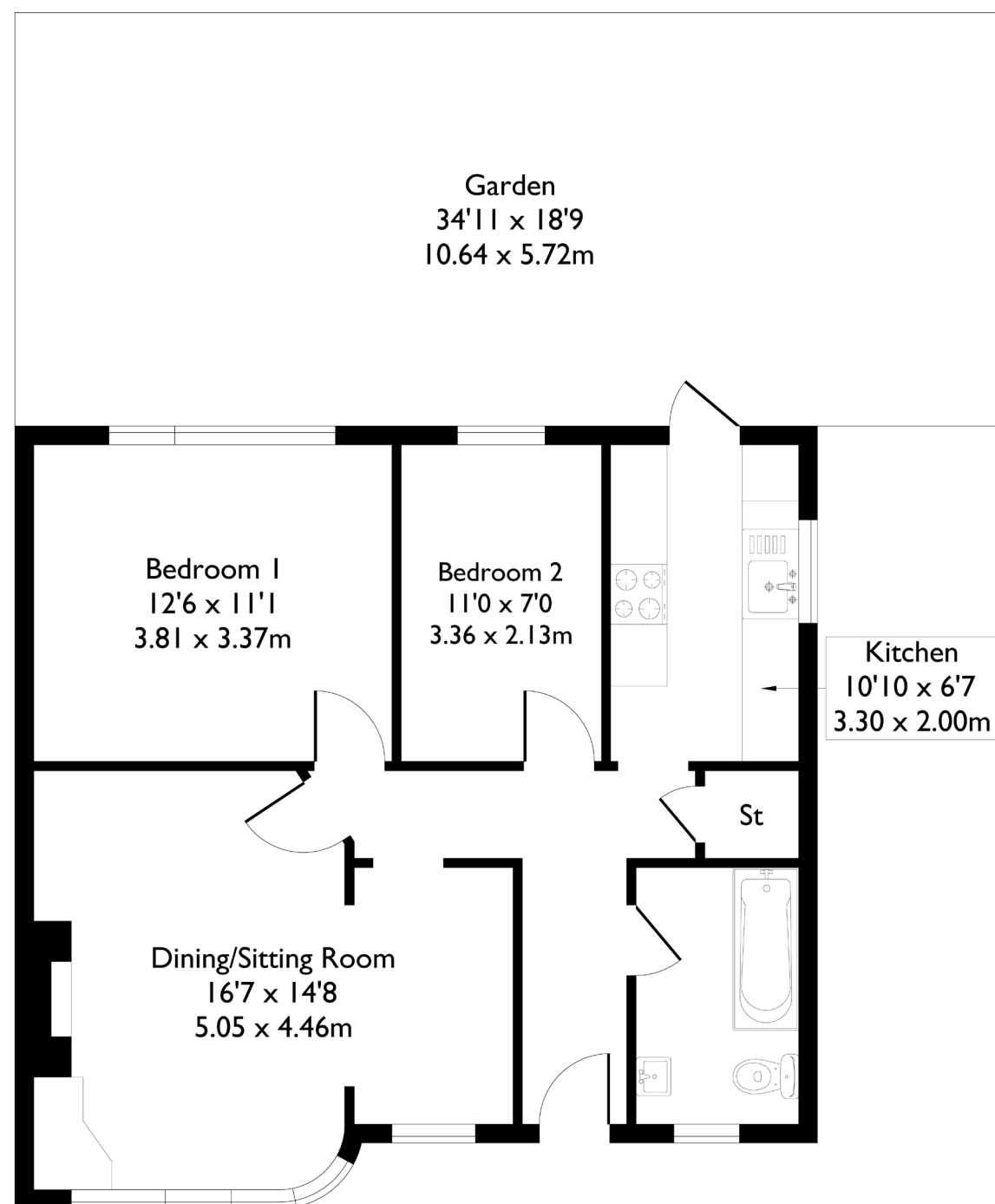
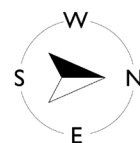


Cavendish Avenue, London, W13

Approximate Floor Area = 61.0 sq m / 657 sq ft



Ground Floor



2 BEDROOM FLAT

Cavendish Avenue, W13

£475,000

Welcome to this ground-floor garden flat, offering two double bedrooms and one bathroom, ideally located in Ealing.

The property benefits from its own private entrance and free on-street parking. Inside, you'll find a bright and spacious reception and dining room with a large double window, a generous double bedroom overlooking the garden, a second double bedroom, and a well-kept kitchen that leads directly out to the private garden. The bathroom includes a bath, and the flat offers plenty of natural light along with useful storage throughout.

FEATURES

- Two Bedrooms
- One Bathrooms
- Large Reception Room/Dining Space
- On Street Free Parking
- West Ealing (Elizabeth Line)/ Castlebar Park Station
- Drayton Manor High School
- EPC Rating D



2 BEDROOM FLAT

Cavendish Avenue, W13

This home has been well maintained and is conveniently positioned close to West Ealing Station and Castlebar Park Station.

It also falls within the catchment area of excellent schools, including Drayton Manor High School and North Ealing Primary, among others

EPC rating D.

