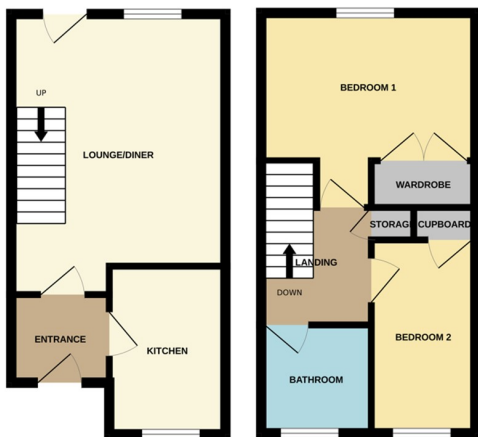




Sunnymead, Werrington PE4 5BY

£150,000



*** NO ONWARD CHAIN *** " Priced to sell, this home is on the market for offers in excess of £150,000. Located in a cul de sac in Werrington, this 2 bedroom semi detached home is an ideal investment or first time buy. Featuring an entrance, kitchen, living space, 2 bedrooms, bathroom and garden. Once it's gone, it's gone! EPC Energy Rating - C/Council Tax Band - A".

ENTRANCE

Door to front.

KITCHEN

9' 7" x 6' 7" (2.92m x 2.01m) (approx) Fitted with a range of base and eye level units, work surfaces over, sink unit and wall mounted boiler. Window to front.

LIVING

14' 4" x 12' 3" (4.37m x 3.73m) (approx) Door to rear, window to rear and stairs to first floor.

FIRST FLOOR LANDING

Loft access and cupboard with hot water tank.

BEDROOM 1

12' 3" x 11' 1"(max) (3.73m x 3.38m) (approx) Window to rear and wardrobe.

BEDROOM 2

11' 2" x 5' 9" (3.40m x 1.75m) (approx) Window to front and cupboard.

BATHROOM

6' 1" x 6' 0" (1.85m x 1.83m) (approx) Window to front.

OUTSIDE

Gate to rear, parking area behind the property.

AGENT NOTES

The floorplan is for illustrative purposes only. Fixtures and fittings do not represent the current state of the property. Not to scale and is meant as a guide only.

