



Guide Price £650,000 Freehold



35 Little Heath Road, Bexleyheath, Kent
DA7 5HE



PROPERTY DESCRIPTION

GUIDE PRICE £650,000 - £675,000 • RE/MAX SELECT are delighted to offer for sale this extended 1930s Feakes&Richards C-type semi-detached house, close to schools, amenities, and transport links including Bexleyheath station.

This stunning property comprises 5 DOUBLE bedrooms, living room, dining/family room, fitted kitchen, upstairs family bathroom, and ground floor shower room. Further benefits include off street parking for 5 cars, 40ft (approx) rear garden, 1st floor cloakroom, double glazing, and gas central heating.

Total Internal Area approx: 1,799.72 sq ft (167.20 sq m).





ROOM DESCRIPTIONS

Ground Floor

Porch

Tiled flooring, double glazed sliding door, door leading to entrance hall.

Entrance Hall

Wood-effect flooring, ceiling coving, radiator, understairs cupboards; carpeted stairs leading to first floor.

Living Room

8.01m x 3.60m (26' 3" x 11' 10") Wood-effect flooring, ceiling coving, radiator, double glazed bay window; double glazed doors leading to dining / family room.

Dining / Family Room

8.96m x 3.42m (29' 5" x 11' 3") Wood-effect flooring, radiators, double glazed windows, skylight windows; double glazed french doors leading to rear garden.

Kitchen

5.68m x 2.65m (18' 8" x 8' 8") Wood-effect flooring; range of wood wall and base units with complementary worktops and tiled splashback; stainless steel sink and drainer with mixer tap; gas hob with stainless steel extractor hood over and built-in oven/grill; integrated bosh dishwasher, 2 integrated fridges; double glazed windows.

Utility / Storage

4.50m x 3.16m (14' 9" x 10' 4") Wood-effect flooring; door leading to shower room; double garage doors.

Ground Floor Shower Room

Tiled flooring; shower enclosure with thermostatic rainfall attachment (and electrical back-up); wash-hand basin with mixer tap; w/c, radiator, extractor fan.

First Floor

Landing

Carpeted; access to insulated loft.

Bedroom

4.34m x 3.45m (14' 3" x 11' 4") Wood-effect flooring, ceiling coving, radiator, fitted wardrobes, double glazed bay windows.

Bedroom

3.70m x 3.30m (12' 2" x 10' 10") Wood-effect flooring, ceiling coving, radiator, fitted wardrobes, double glazed windows.

Bedroom

3.54m x 3.15m (11' 7" x 10' 4") Carpeted, ceiling coving, radiator, fitted wardrobes, double glazed bay windows.

Bedroom

3.14m x 2.64m (10' 4" x 8' 8") Wood-effect flooring, ceiling coving, radiator, double glazed windows.

Bedroom

2.40m x 2.00m (7' 10" x 6' 7") Wood-effect flooring, ceiling coving, radiator, double glazed bay windows.

Family Bathroom

2.66m x 2.25m (8' 9" x 7' 5") Tiled flooring; panelled bath with mixer tap and thermostatic shower attachment; wall-hung vanity unit with wash-hand basin and mixer tap; w/c, extractor fan, double glazed frosted windows.

Cloakroom

Tiled flooring, part-tiled walls; wash-hand basin with mixer taps; w/c, extractor fan.

External

Front Driveway

Off street parking for 5 cars; block-paved; mature shrubs and trees.

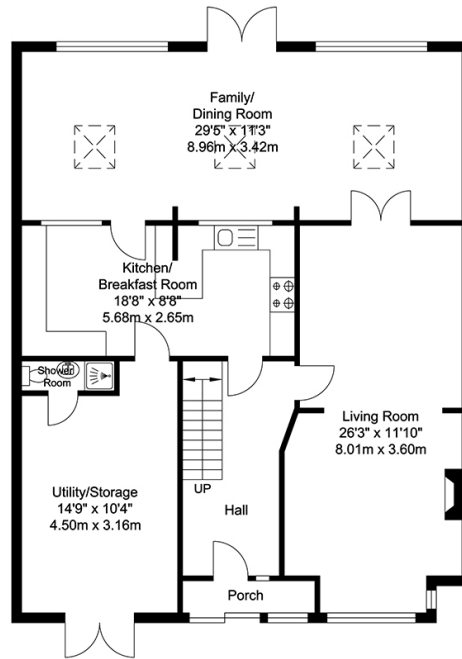
Rear Garden

Approximately 40ft; patio area, lawn; mature bushes, shrubs and trees; outdoor tap, outdoor light; 2 sheds.

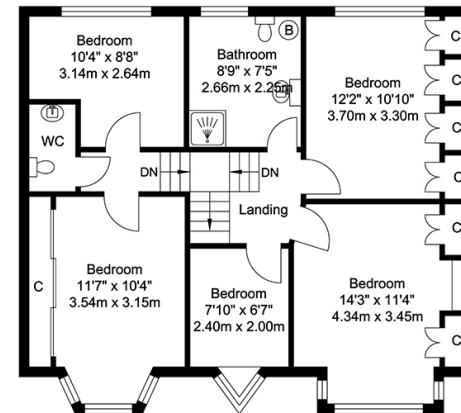
Information

- Close to sought-after schools incl 4 grammar schools
- Easy access to A2 / M25

FLOORPLAN



Ground Floor
Approximate Floor Area
1085.86 SQ.FT.
(100.88 SQ.M.)



First Floor
Approximate Floor Area
713.86 SQ.FT.
(66.32 SQ.M.)



TOTAL APPROX FLOOR AREA 1799.72 SQ. FT / 167.20 SQ. M
For Identification Purposes Only.

