



The Sycamores
Grange Court Road
Adsett
Westbury-on-Severn
Gloucestershire
GL14 1PJ

Offers in Excess of £535,000

bettermove

Grange Court Road

Westbury-on-Severn

Bettermove are proud to present this 5 bedroom detached bungalow located just outside the picturesque village of Westbury-on-Severn. This property offers a comfortable and flexible living space blending traditional charm with modern conveniences.

The property benefits from double glazing, septic tank drainage, oil fired central heating throughout and has ample off street parking available via the driveway and double garage. The council tax band is E. The property is being sold with an agricultural tie.

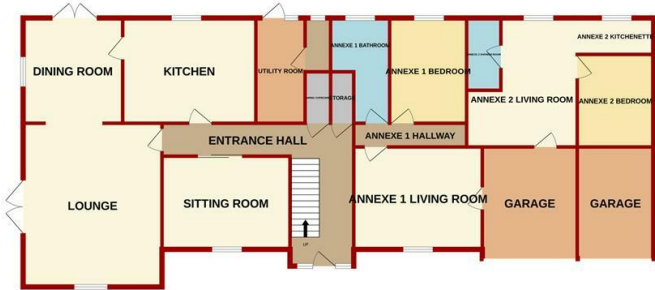
The interior of this well presented property comprises three reception rooms, the fitted kitchen, utility room with ample storage space throughout the main living areas. The ground floor also hosts two one bedroom annexes. The first floor hosts 5 bedrooms, including the master bedroom with a walk in wardrobe and ensuite bathroom. The exterior boasts a private rear garden, perfect for enjoying the summer months.

Located in the village of Westbury-on-Severn, on the west bank of the River Severn. The village has a few local shops for everyday use, including a post office, pubs & restaurants and healthcare. Transport links can be found from regular bus services, the A48 and many local roads connecting the village to surrounding areas. The village is well equipped with many cycling and walking trails, especially along the River Severn.

This exciting opportunity should not be missed! All enquiries can be made through Bettermove on 0330 004 0050.



GROUND FLOOR



1ST FLOOR



Measurements are approximate. Not to scale. Illustrative purposes only
Made with Metropix ©2024

Energy Efficiency Rating		
	Current	Potential
<i>Very energy efficient - lower running costs</i>		
(92+) A		
(81-91) B		87
(69-80) C		
(55-68) D		
(39-54) E		
(21-38) F	23	
(1-20) G		
<i>Not energy efficient - higher running costs</i>		
England, Scotland & Wales	EU Directive 2002/91/EC	



20-22 Bridge End, Leeds, LS1 4DJ
t: 0330 004 0050 e: hello@bettermove.co.uk
www.bettermove.co.uk