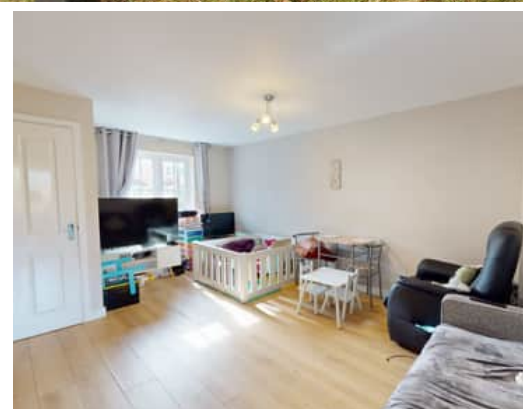


3 Bedroom(s), Terraced House, Leasehold

Sargeson Road, Armthorpe.



- 3D Virtual Tour Available
- Kitchen Diner
- Ground Floor W/C
- Family Bathroom
- No Chain

- Mid Terrace Family Home
- Spacious Lounge
- Three Bedrooms En Suite to Master
- Popular Location In Armthorpe

**Offers Over
£145,000
Reduced**

Book your viewing today Tel: 01302 247754

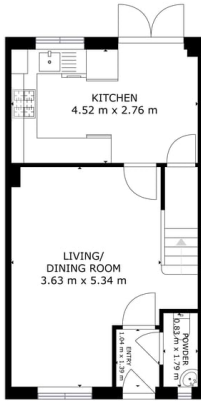
Owner's View

3D Virtual Tour Available- Take a closer, more detailed look around via our 3D Virtual Tour! Don't forget that you can also check availability for viewings online via a visit to our website... This Mid terrace family home is found in the very popular location of Armthorpe. Close by to many local amenities, great walks and much more. Book your viewing appointment today via the link below.

<https://www.thepropertyhive.co.uk/property-for-sale/details/26681967>

Ground Floor

Floor Plan



FLOOR 1

GROSS INTERNAL AREA
FLOOR 1: 27 m² FLOOR 2: 37 m²
TOTAL: 64 m²

Matterport

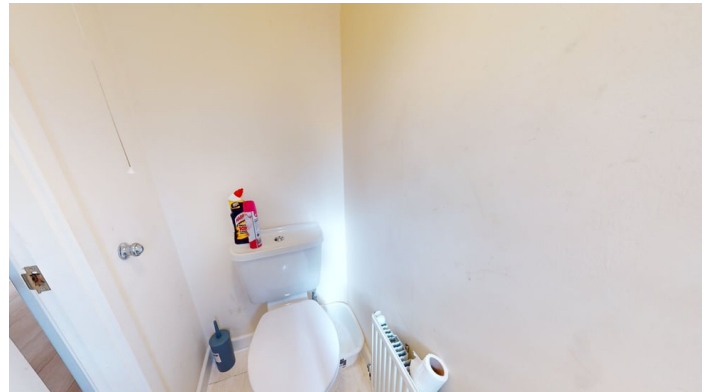
Kitchen Diner



Living Room

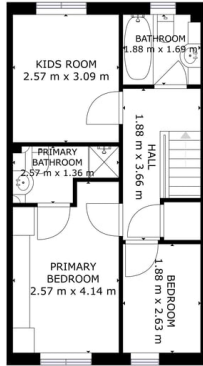


Ground Floor W/C



First Floor

Floor Plan



FLOOR 2

GROSS INTERNAL AREA
FLOOR 1: 27 m² FLOOR 2: 37 m²
TOTAL: 74 m²

SIZES AND DIMENSIONS ARE APPROXIMATE. ACTUAL MAY VARY.



Bedroom 3



Bathroom



Bedroom 1



Bedroom 2



External

Front Aspect



Rear Garden



verified by prospective buyers or tenants before agreeing an offer. All measurements provided are approximate and should be verified before exchange of contracts. No appliances, fixtures or fittings have been tested and should be checked by the buyer before exchange of contracts to ensure they are in good working order.

Property Information

Council Tax Band -

Utilities - Mains Gas, Mains Electricity, Mains Water

Water Meter -

Average Annual Electricity Bills -

Average Annual Gas Bills -

Average Annual Water Bills -

Tenure - Leasehold

Solar Panels -

Space Heating System -

Approximate Heating System Installation Date -

Water Heating System -

Approximate Water Heating Installation Date -

Boiler Location -

Approximate Electrical System Installation Date -

Approximate Electrical System Test Date -

Fires/Heaters -

Permanent Loft Ladder -

Loft Insulation -

Loft Boarded out -

Whilst every effort is made to ensure that the information contained in these particulars is reliable, they do not constitute or form part of an offer or any contract. The Property Hive accept no liability for the accuracy of the contents, and therefore they should be independently

All measurements provided are approximate and should be verified before exchange of contracts. No appliances have been tested and should be checked to ensure they are in good working order.

Energy Performance Certificate

Energy Efficiency Rating		
	Current	Potential
<i>Very energy efficient - lower running costs</i>		
(92-100) A		
(81-91) B		90
(69-80) C	77	
(55-68) D		
(39-54) E		
(21-38) F		
(1-20) G		
<i>Not energy efficient - higher running costs</i>		
England, Scotland & Wales		EU Directive 2002/91/EC 