



Hertsmere Road, London, E14 4EF

**Cow & Co**  
LONDON



GUIDE PRICE OF £1,250,000-1,500,000. A stunning split level three-bedroom apartment in the sought-after West India Quay landmark skyscraper.

The property boasts sleek modern floor tiling with under floor heating, a stand alone bath in the master bedroom, an abundance of innovative built in storage solutions throughout and panoramic views of London's skyline.

This dock facing property is located next to West India Quay DLR station and the new Crossrail station. The local bars, restaurants and cinema offer easy options for entertainment nearby. The Canary Wharf estate is a foot bridge away, as is the Jubilee Line and shopping centres located beneath Canary Wharf.

The property includes a secure underground parking space. The building benefits from a 24hr porter and also use of the services from the Marriott Hotel. Square Footage: 1799 sq ft

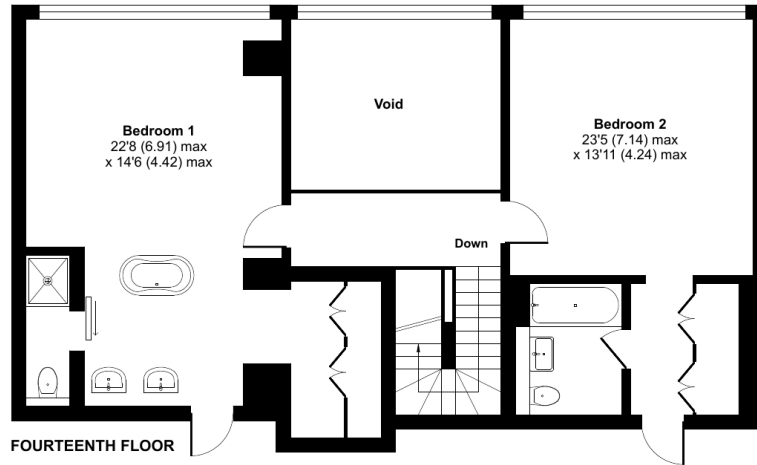


- Sought after building
- Landmark skyscraper
- 24 Hour Concierge Service
- Allocated off street parking space
- Overlooking West India Docks & Canary Wharf
- Panoramic city views
- Modern contemporary style fixtures and fittings
- Three en-suite bathrooms

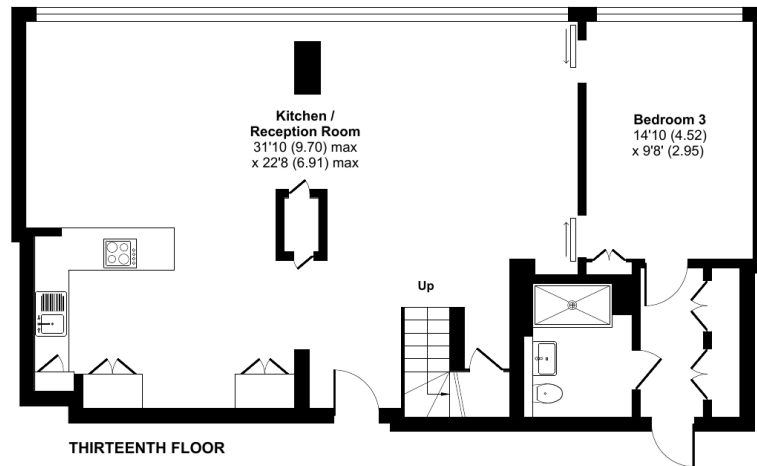
# Hertsmere Road, 1 WEST INDIA QUAY, London, E14

Approximate Area = 1799 sq ft / 167 sq m (excludes void)

For identification only - Not to scale



FOURTEENTH FLOOR



THIRTEENTH FLOOR



Floor plan produced in accordance with RICS Property Measurement Standards incorporating International Property Measurement Standards (IPMS2 Residential). © nchecon 2022. Produced for Cow & Co Properties Ltd. REF: 875011

Tel: 0208 065 0010  
Email: [thehub@cowandco-london.com](mailto:thehub@cowandco-london.com)  
Web: [cowandco-london.com](http://cowandco-london.com)

Agents note: All measurements are approximate and whilst every attempt has been made to ensure accuracy they are for general guidance only and must not be relied on. The fixture and fittings referred to have not been tested and therefore no guarantee can be given that they are in working order. Internal photographs are reproduced for general information and it must not be inferred that any item shown is included with the property.

**Cow & Co**  
LONDON