



Cambridge Avenue, London, NW6

£475,000



Cambridge Avenue, London, NW6

A modern two double bedroom top floor apartment offering in excess of 650 Sq Ft (60 Sq M) of internal space including an impressive kitchen/reception room area. This fine apartment would make an ideal first time purchase and further benefits from access to a well maintained communal gardens.

Cambridge Avenue is ideally situated close to Kilburn Park station (Bakerloo Line) with local amenities, cafes and restaurants found also nearby.

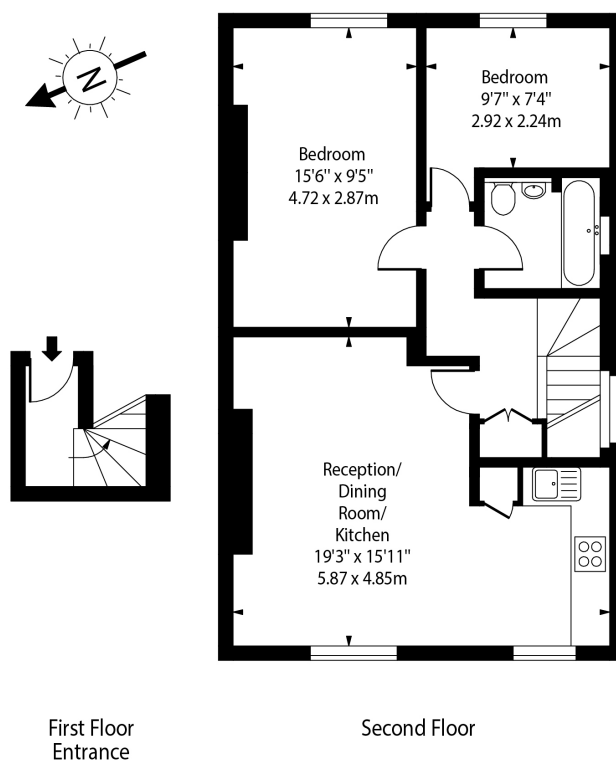
Features

- Top Floor Flat
- Modern Throughout
- Access To Communal Garden
- Two Double Bedrooms
- Impressive Open Plan Kitchen/Reception
- Contemporary Bathroom
- Fully Fitted Kitchen
- Close To Kilburn Park Station
- In Excess of 650 Sq Ft Of Internal Space



Cambridge Avenue, London, NW6

Cambridge Avenue, NW6



Approx Gross Internal Area 654 Sq Ft - 60.76 Sq M

For Illustration Purposes Only - Not To Scale Floor Plan by www.nogaphotostudio.com Ref: No.51521

This floor plan should be used as a general outline for guidance only. Any intending purchaser or lessee should satisfy themselves by inspection, searches, enquiries and full survey as to the correctness of each statement. Any areas, measurements or distances quoted are approximate and should not be used to value a property or be the basis of any sale or let.