



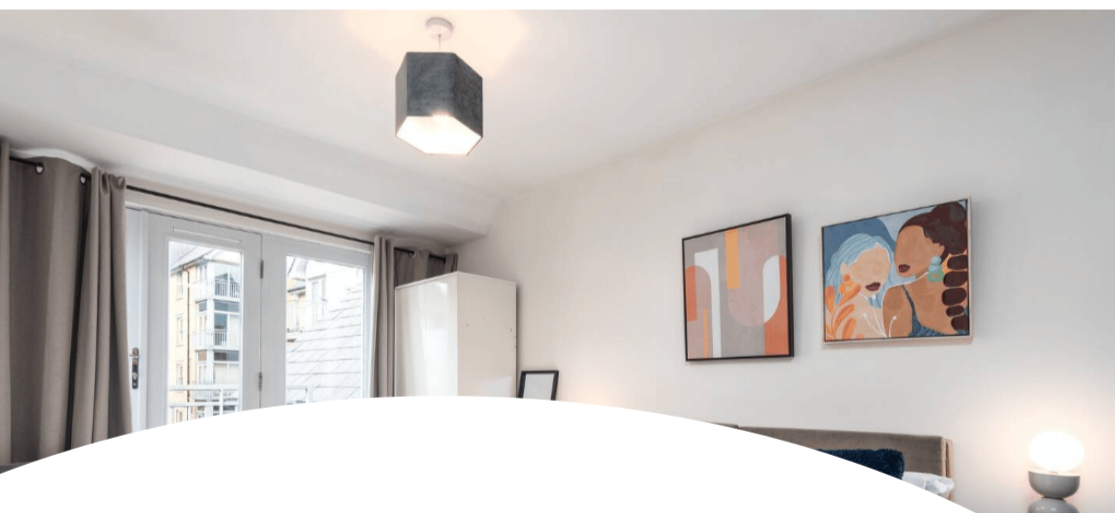


Modern open plan kitchen/ reception with large fridge/ freezer, washer dryer and dishwasher. Available from 3rd July 2024 at £440 per month per person (£105 per week), plus a bills package available. The house is modern and also benefits from two parking permits; bills package available to cover Gas, Electricity, Water, Waste Water, High Speed Internet and TV Licence - please email or call to discuss. [canterbury@absoluteliving.co.uk](mailto:canterbury@absoluteliving.co.uk).



- PREMIUM STUDENT HOUSE
- FULLY FURNISHED
- TWO BALCONIES
- £440 PER PERSON PER MONTH
- ALDI 30 SECS AWAY
- NO ADMIN FEES

- AVAILABLE 3RD JULY 2024
- FIVE DOUBLE BEDROOMS
- TWO BATHROOMS
- CLOSE TO UKC BUS STOP, ST AUGUSTINES FOR CHRISTCHURCH
- BILLS PACKAGE AVAILABLE
- TWO PARKING SPACES



## Bingley Court

Rheims Way, Canterbury Centre, CT1 2SW

BINGLEY COURT CT1. Five bedroom house over three floors with two bathrooms. All the bedrooms are of an equal size and two bedrooms benefit from private balconies. On the ground floor there is a spacious fully equipped kitchen/ reception and two parking spaces outside. Located 30 secs from Aldi and an 8 minute walk into the centre of Canterbury whilst being close for the Unibus and St Augustines. This is a posh student house, the photos don't show wardrobes/ desks and chest of drawers but these will be provided. High speed wifi and fully refurbished in 2023 this home is waiting for your group. Available from the beginning July 2024 for a 12 month tenancy. No admin fees, call to view. Suitable for students!

