



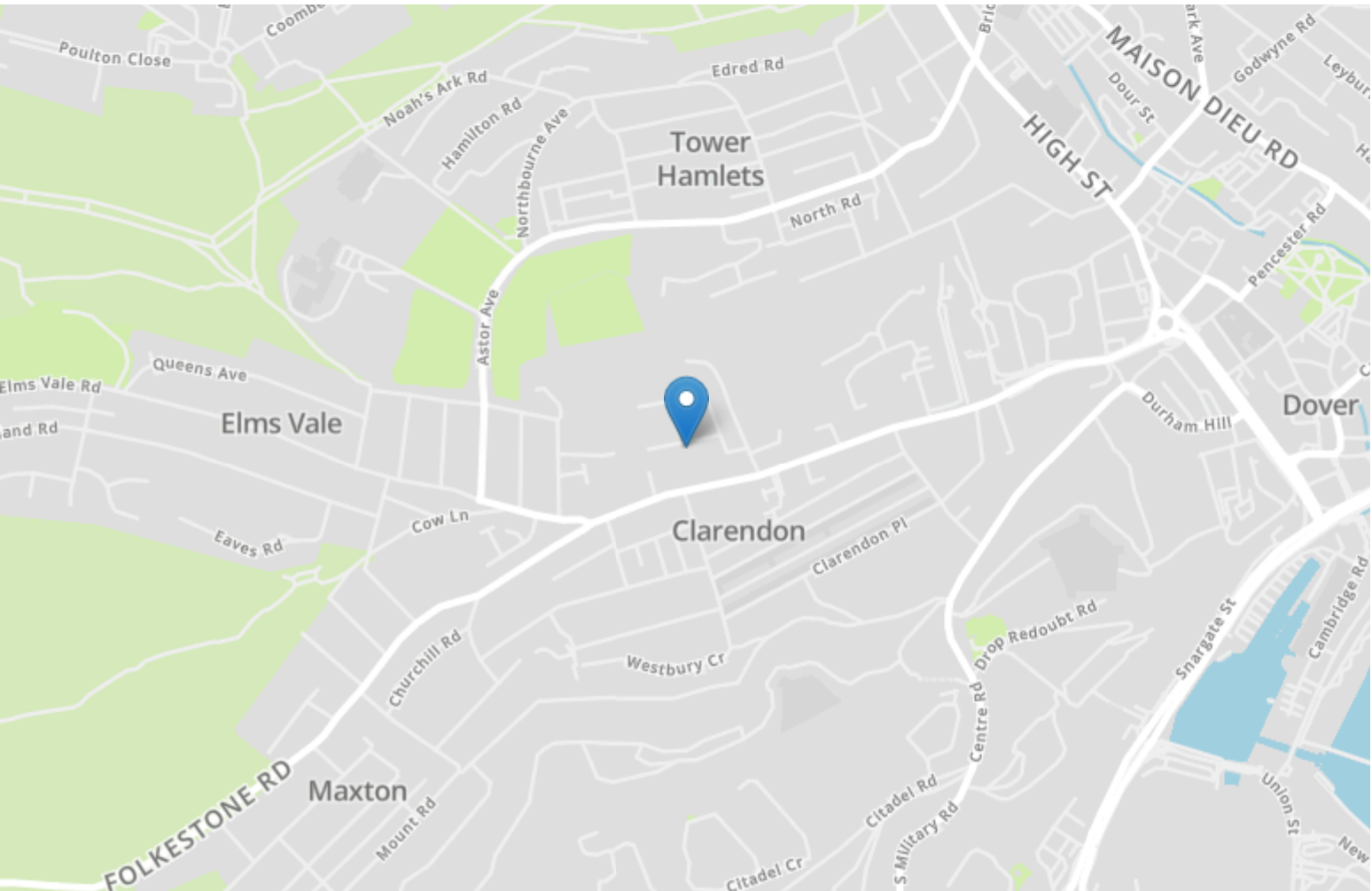
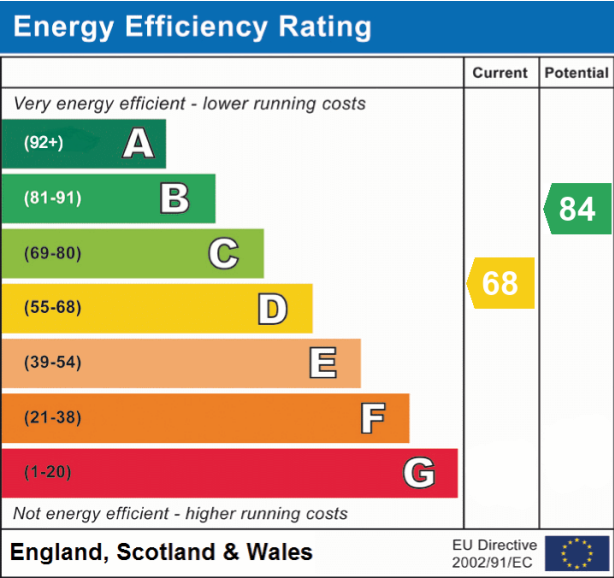
Burnap + Abel
The Charlton Centre High St
Dover
CT16 1TT

Email Dover@burnapandabel.co.uk
Phone 01304 279107
<https://www.burnapandabel.co.uk/>



Burnap + Abel
The Charlton Centre High St
Dover
CT16 1TT

Email Dover@burnapandabel.co.uk
Phone 01304 279107
<https://www.burnapandabel.co.uk/>



21 Winchelsea Street

Dover
CT17 9ST

£180,000 FREEHOLD

Draft Details...FOR SALE THOROUGH BURNAP + ABEL...Price Range £180,000 - £190,000 | Located in the ever-popular Winchelsea Street, this wonderful four-bedroom terraced home offers generous living space and an enviable position close to everything Dover has to offer. Within walking distance of Dover Priory train station - providing fast links to London - as well as local schools and shops, the property is perfectly placed for both families and commuters alike. The accommodation is both spacious and versatile, boasting a spacious lounge complete with a charming log burner, a well-proportioned kitchen, four bedrooms including a principal bedroom with en-suite, and a family bathroom. To the rear, a sunny garden provides the ideal setting for outdoor dining, entertaining, or simply relaxing. With gas central heating throughout, this home combines comfort, convenience, and character, making it ideal for first-time buyers, growing families, or investors looking for a superb opportunity in a sought-after location. For your chance to view call Burnap + Abel on 01304 279107.



<https://www.burnapandabel.co.uk/>

Entrance Hall

Bedroom

13' 3" x 10' 7" (4.04m x 3.23m)

En Suite

Lounge

13' 1" x 12' 10" (3.99m x 3.91m)

Kitchen

11' 2" x 9' 9" (3.40m x 2.97m)

Bedroom

10' 0" x 6' 6" (3.05m x 1.98m)

Bedroom

13' 3" x 11' 2" (4.04m x 3.40m)

Bedroom

10' 4" x 8' 1" (3.15m x 2.46m)

Bathroom

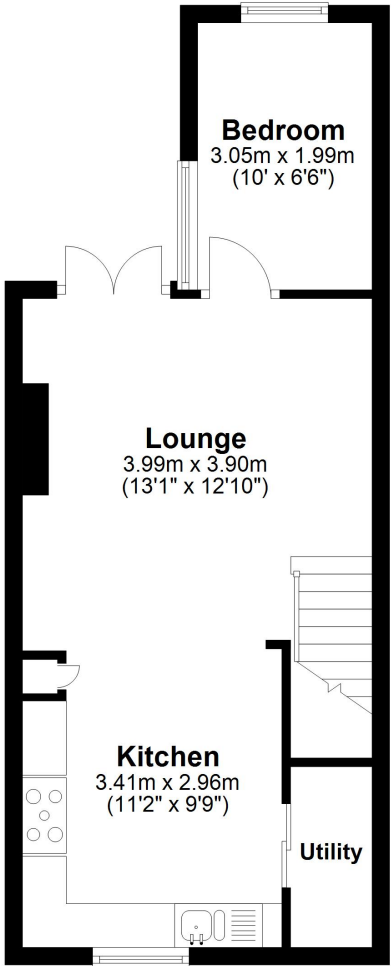
7' 10" x 4' 9" (2.39m x 1.45m)

Garden

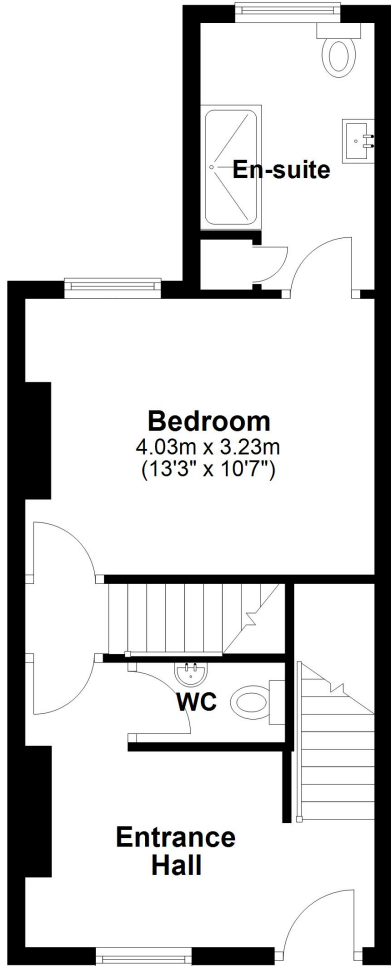
Area Information

This property is situated in a popular residential area of Dover only a short distance from the town centre and within walking distance of Dover Priory railway station with its fast link train to London St Pancras in 1 hour 5 minutes. There are excellent access routes to the A20/M20 to Ashford and London. There are a good range of primary and secondary schools in the area, including the Dover Boys' Grammar School.

Lower Ground Floor
Approx. 35.7 sq. metres (384.4 sq. feet)



Ground Floor
Approx. 32.6 sq. metres (351.2 sq. feet)



First Floor
Approx. 29.9 sq. metres (322.1 sq. feet)

