



Holly Drive, Potters Bar, Hertfordshire, EN6

£425,000

- CHAIN FREE
- DOUBLE GLAZED THROUGHOUT
- PRIVATE REAR GARDEN
- THREE BEDROOM TERRACED HOME
- WALKING DISTANCE TO POTTERS BAR MAIN LINE TRAIN STATION

Holly Drive, Potters Bar, Hertfordshire, . EN6

£425,000 Freehold

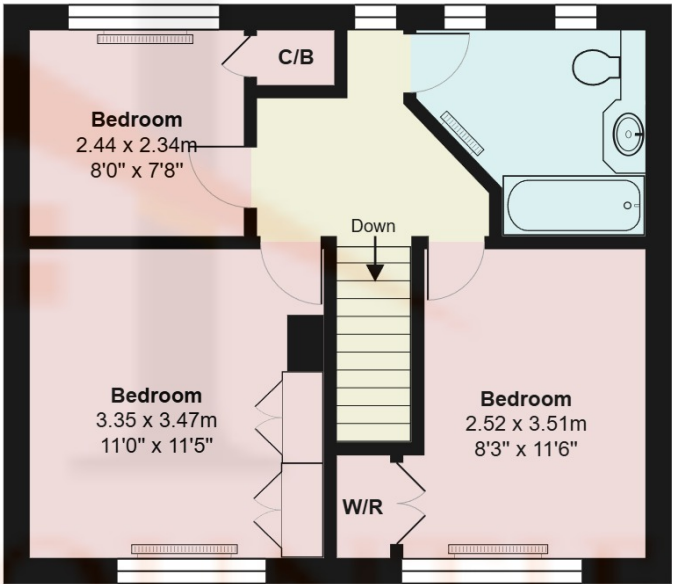
CHAIN FREE

This three bedroom terraced home is ideally located just moments from Mutton Lane and Potters Bar High Street and a short walk to Potters Bar Mainline Train Station with fast trains into Kings Cross in just 17 minutes.

The home benefits from double glazing throughout, kitchen diner to one side, dual aspect lounge with patio doors into the garden and three bedrooms and a family bathroom.



Ground Floor
Area: 39.6 m² ... 426 ft²



First Floor
Area: 42.1 m² ... 453 ft²

Holly Drive, Hertfordshire EN6

Total Area: 81.7 m² ... 879 ft²

All measurements are approximate and for display purposes only

