



Elizabeth Square

£750,000



## Elizabeth Square, London SE16 5XN

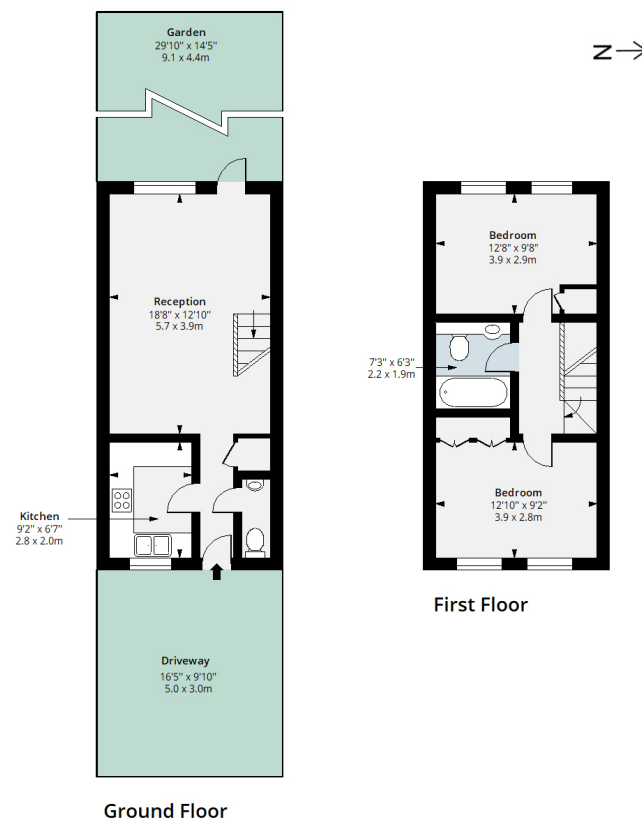
An exceptional freehold house presented in immaculate condition providing generous accommodation to include reception room, separate fitted kitchen, two bedrooms, garden and allocated parking. Set within a sought after riverside development moments from the Thames Path, Stave Hill Ecological Park and Surrey Quays Shopping Centre. The nearest station is Canada Water [Jubilee and Overground] with regular riverboat services to Canary Wharf via nearby Rotherhithe Pier.

Arranged over two floors, this superb freehold house comprises entrance hall, impressive reception room with dining area, door leading to enclosed rear garden, separate fitted kitchen with work tops and integrated appliances, guest cloakroom/WC, stairs lead to first floor landing with doors providing access to master bedroom with fitted wardrobes, guest bedroom two and bathroom. The property is immaculately presented and occupies a quiet position within a sought after riverside development.

- Elizabeth Square SE16
- Two Double Bedrooms
- Separate Fitted Kitchen
- Allocated Parking
- Well Presented
- Freehold House
- Generous Reception Room
- Enclosed Rear Garden
- Riverside Development
- Excellent Location

### Elizabeth Square SE16

Approx. Gross Internal Area 739 Sq Ft - 68.65 Sq M



Measured according to RICS IPMS2. Floor plan is for illustrative purposes only and is not to scale. Every attempt has been made to ensure the accuracy of the floor plan shown, however all measurements, fixtures, fittings and data shown are an approximate interpretation for illustrative purposes only. 1 sq m = 10.76 sq feet.  
lpaplus.com





