

TO LET

Hamlet Gardens,
Ravenscourt Park, W6

Flat
Ravenscourt Park

£2,100 pcm

2  1  1 

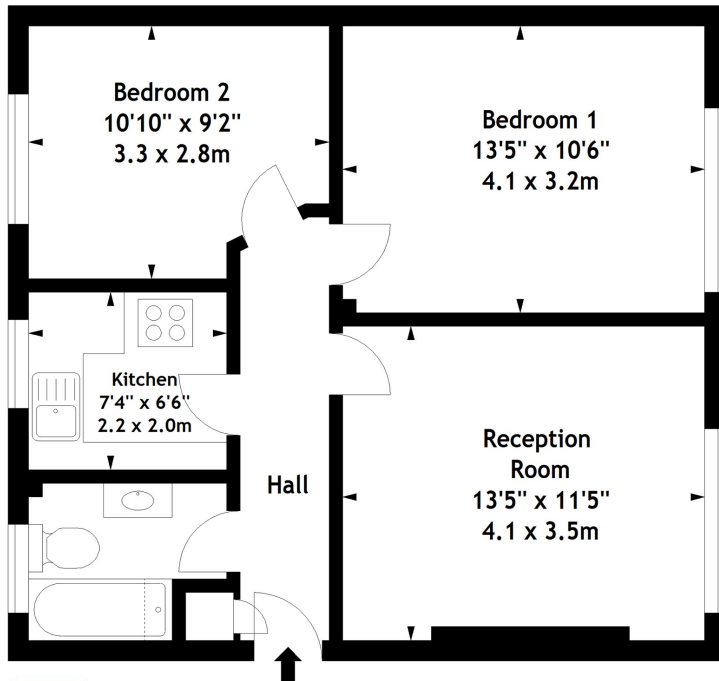


**horton
andgarton**

SALES / LETTINGS / PROPERTY MANAGEMENT

hortonandgarton.co.uk | Sales 020 8819 0510 | Lettings 020 8819 0511
172 King Street, Hammersmith, W6 0QU



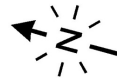


First Floor



Hamlet Gardens, W6
Gross Internal Area 565 sq ft - 52.5 sq m

Drawn from supplied plans. All measurements are approximate.
This floor plan is for illustrative purposes only and is not to scale.
© Horton and Garton Estate Agents 2016



Two double bedrooms | Furnished | Purpose built flat |
Wooden floors | EPC rating D | Ravenscourt Park



hortonandgarton.co.uk
Sales 020 8819 0510
Lettings 020 8819 0511

172 King Street, Hammersmith, W6 0QU