

# The Courtyard

Sutton Veny House Nursing Home, BA12 7BJ

COOPER  
AND  
TANNER



£189,950 Leasehold

2 1 2 EPC E

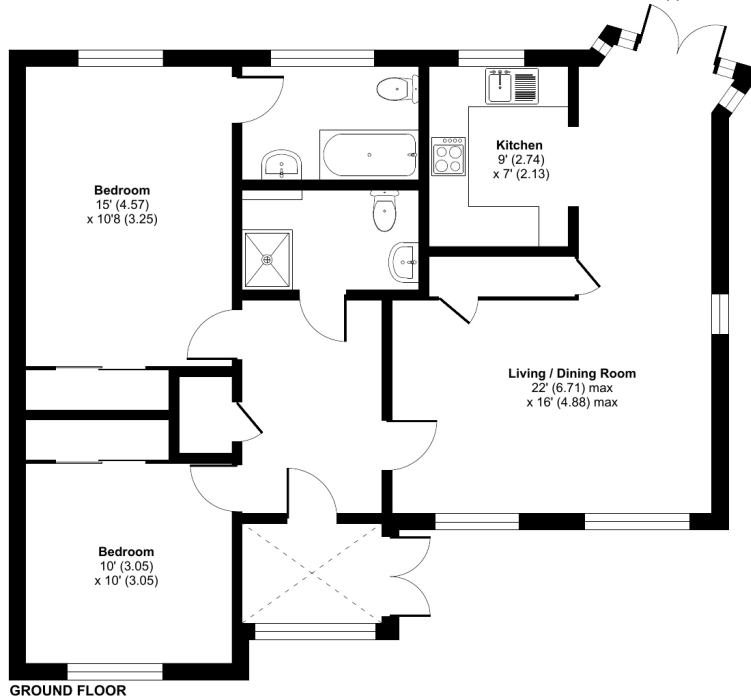
## Description

Cooper and Tanner are pleased to offer this charming two bedroom semi detached bungalow for the over 55's and is situated within the grounds of Sutton Veny Nursing Home. The property offers light and airy accommodation with allocated parking and communal gardens and is being offered for sale with no onward chain. In brief the accommodation comprises entrance porch, inner hall with large storage cupboard, I-shaped lounge/diner with French doors out onto the communal gardens, wood fitted kitchen oven, hob, main bedroom with en-suite shower room, further double bedroom and main bathroom.



## Sutton Veny House Nursing Home, Sutton Veny, Warminster, BA12

Approximate Area = 889 sq ft / 82.5 sq m  
For identification only - Not to scale



GROUND FLOOR



Floor plan produced in accordance with RICS Property Measurement Standards incorporating International Property Measurement Standards (IPMS2 Residential). © nrichecom 2024. Produced for Cooper and Tanner. REF: 1121414



### Features

- Retirement bungalow
- Set in grounds of Sutton Veny House
- Two bedrooms
- Built in Storage
- For over 55's
- Communal garden
- Allocated parking
- Double glazing
- 124 yr lease commenced 1998
- Service charge £170 pm - Ground rent £90 pm

### Local Information

- **Tenure** Leasehold
- **EPC Rating** E

#### WARMINSTER OFFICE

Telephone 01985 215579

48-50, Market Place, Warminster, Wiltshire BA12 9AN

[warminster@cooperandtanner.co.uk](mailto:warminster@cooperandtanner.co.uk)

**COOPER  
AND  
TANNER**

Important Notice: These particulars are set out as a general outline only for the guidance of intended purchasers and do not constitute, nor constitute part of, an offer or contract. All descriptions, dimensions, reference to condition and necessary permissions for use and occupation, warranties and other details are given without responsibility and any intending purchasers should not rely on the same as statements or representations of fact but must satisfy themselves by inspection or otherwise as to the correctness of each of them.

