





Key Features

 4 Bedrooms

 1 Public

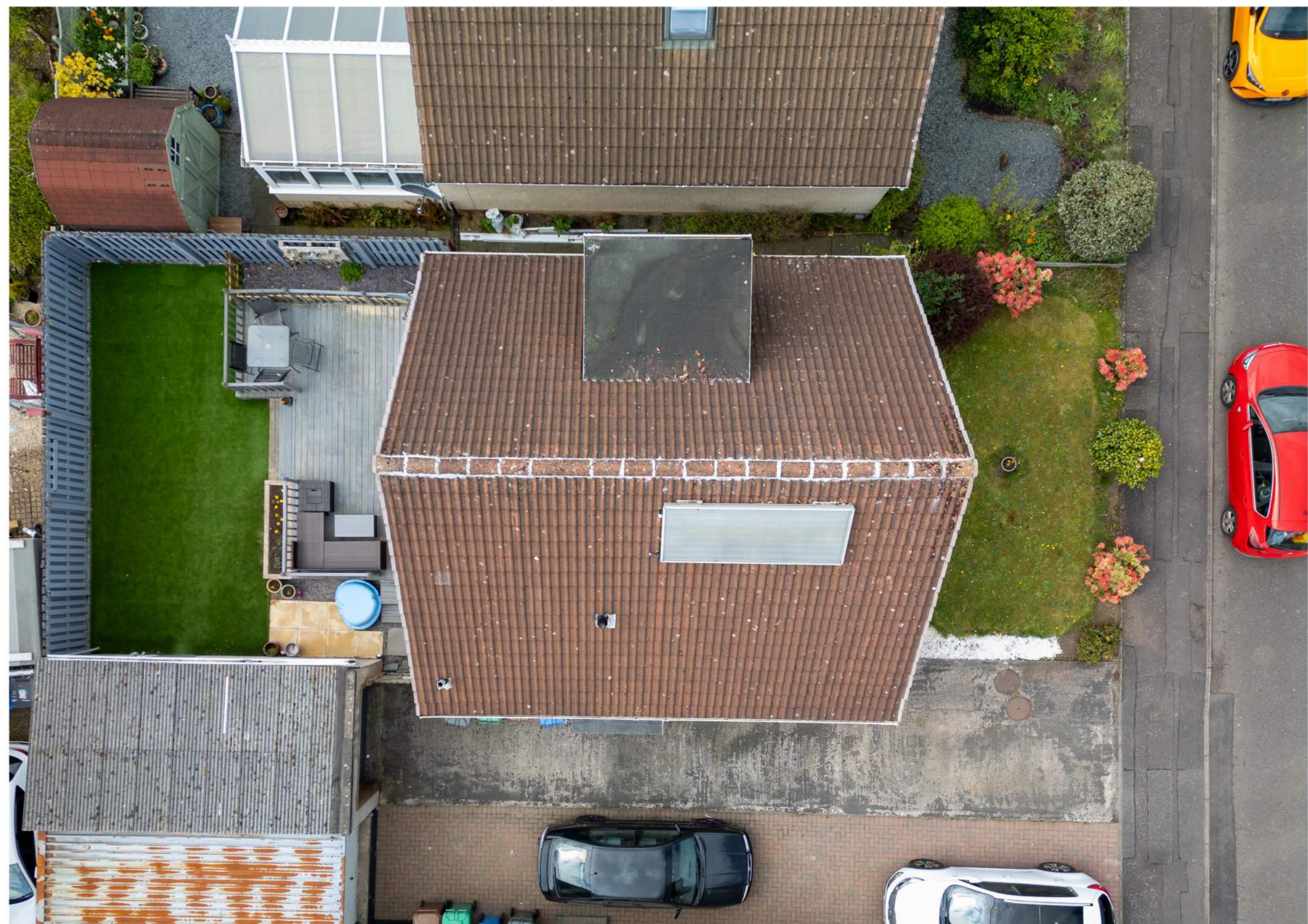
 1 Bathroom

- A well-presented, four bedroom detached home, located within a popular residential setting within the popular town of Rosyth
- Excellent location with a variety of amenities within Rosyth including various eateries, convenience stores and supermarkets. Additional amenities within the nearby city of Dunfermline
- Local primary schooling available with Park Road Primary only a few minutes walk away. Additional primary schooling within Rosyth and secondary schooling within Inverkeithing and Dunfermline
- Fantastic transport links with Rosyth Train Station offering a regular service to and from Edinburgh Waverly and throughout the Fife circle. Less than one mile from the M90 motorway with Park and Ride facilities in nearby Inverkeithing and Halbeath
- Driveway with parking for several cars leading to single garage
- Full length living room leading to dining area with French doors onto gardens
- Modern kitchen with a good selection of floor and wall mounted storage available, ample worktop space and access onto gardens
- Double bedroom located on the ground floor
- Three additional bedrooms on the first floor with built in storage available within bedroom two and three
- Shower room with rainfall style, mains fed shower, WC and wash hand basin
- Neat front and rear gardens consisting of decked area, perfect for alfresco dining, artificial turf and south west facing aspects
- A fantastic family home, located within a quiet residential cul-de-sac. Viewing comes highly recommended









Location

Situated on the northern shore of the Firth of Forth, Rosyth offers a unique blend of coastal charm, community spirit, and convenient modern living. With a rich naval heritage and close proximity to Scotland's historic landmarks, Rosyth provides a welcoming environment for families, professionals, and retirees alike.

The town features a range of local amenities, including supermarkets, independent shops, and cafés, along with nearby access to excellent schools and healthcare facilities. Green spaces such as Rosyth Public Park and nearby recreational areas offer perfect spots for walks, outdoor activities, and family outings.

Rosyth benefits from outstanding transport links. It has its own train station with regular services to Edinburgh—just a 30-minute journey—while the nearby M90 motorway offers direct routes to Glasgow, Perth, and beyond. Edinburgh Airport is easily reachable, and Park and Ride options at Inverkeithing and Halbeath enhance travel flexibility.

Whether you're drawn by the coastal setting, strong sense of community, or excellent connectivity, Rosyth offers a balanced and enjoyable lifestyle in the heart of Fife.



Enquiries

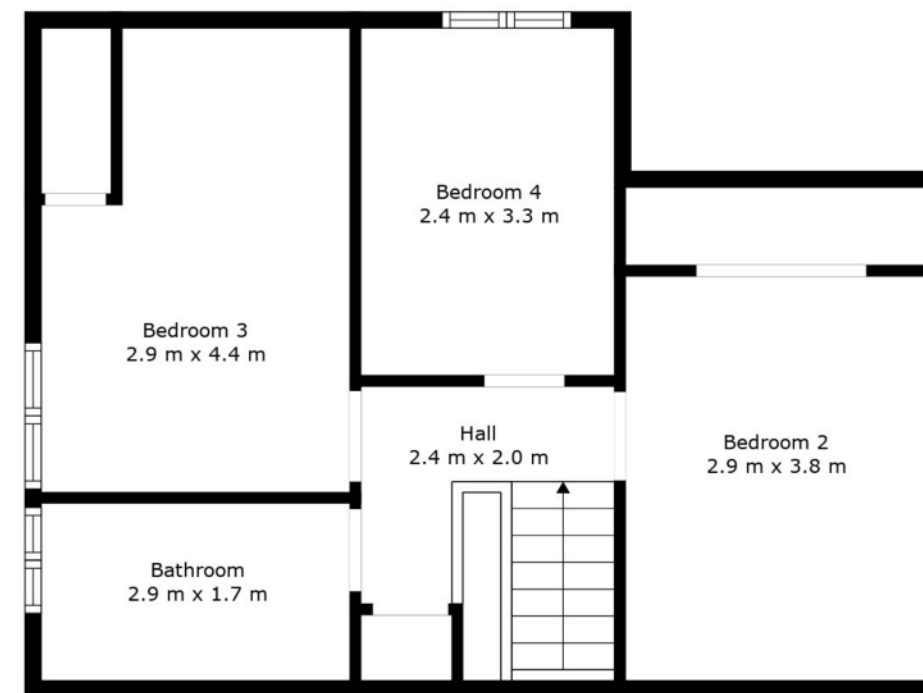
01383 629720

info@maloco.co.uk

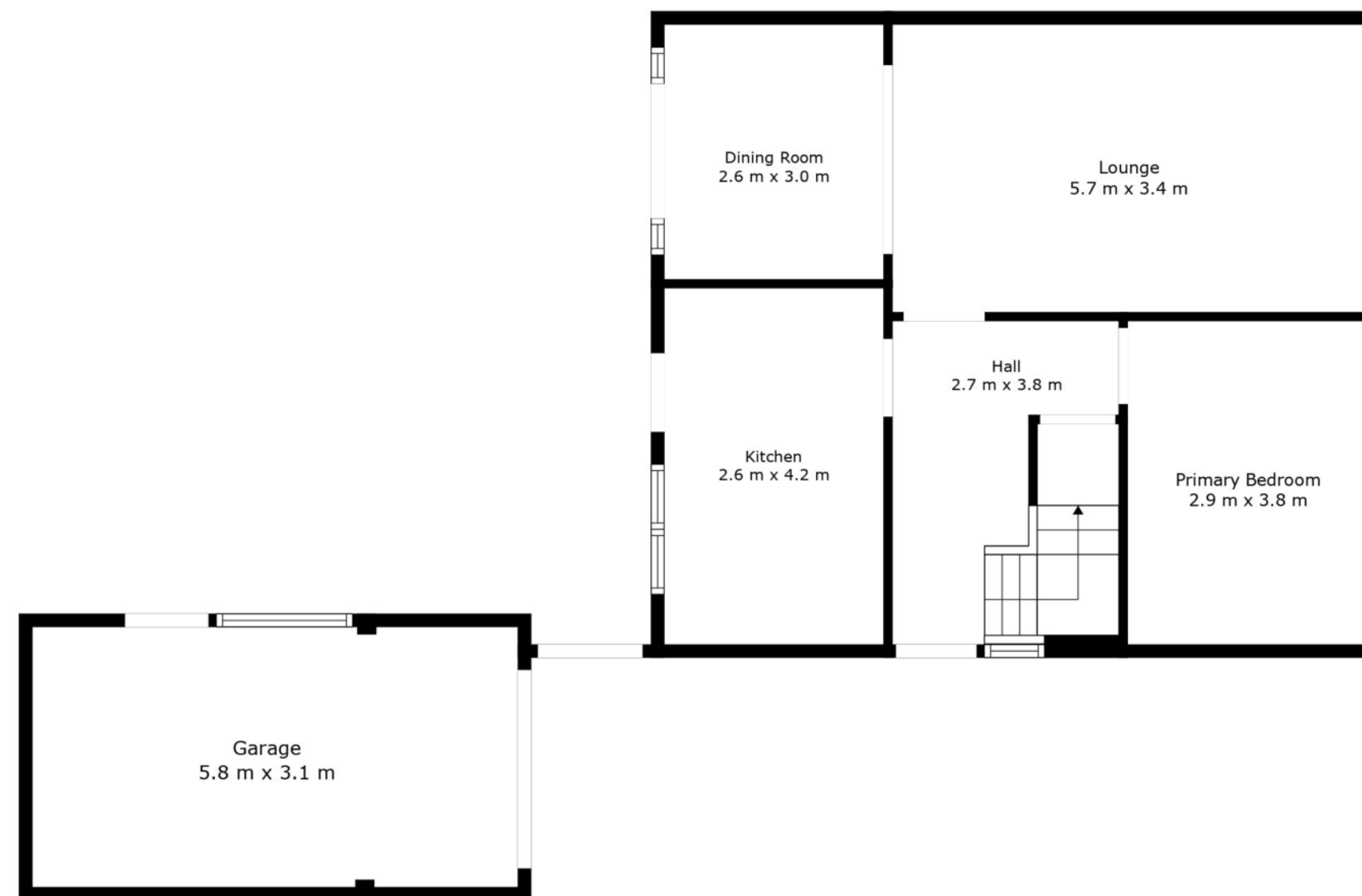
maloco.co.uk



Floorplans are for illustrative purposes only. Measurements are deemed highly reliable but not guaranteed.



Floor 2



Floor 1

TOTAL: 102 m2
FLOOR 1: 62 m2, FLOOR 2: 40 m2
EXCLUDED AREAS: GARAGE: 18 m2, LOW CEILING: 7 m2

Measurements Are Regarded As Highly Reliable; However, They Cannot Be Guaranteed.

