





17a Mornington Road, Ashford, Surrey TW15 1NP
£475,000 - Freehold



PROPERTY DESCRIPTION

Delightfully situated within a quiet residential road in central Ashford, this detached bungalow offering good size accommodation and comprising of a spacious living room, modern fitted kitchen with built in appliances, two double bedrooms with the master having a range of fitted wardrobes, shower room, entrance hallway. To the front there is own drive way with herringbone block brickwork to ample of road parking and a garage , the rear garden is easterly facing and mainly laid to lawn with a covered patio area. The bungalow benefits from gas fired central heating with a combi boiler and replacement double glazed windows throughout. This bungalow is being offered with no onward chain and viewings are strongly recommended.

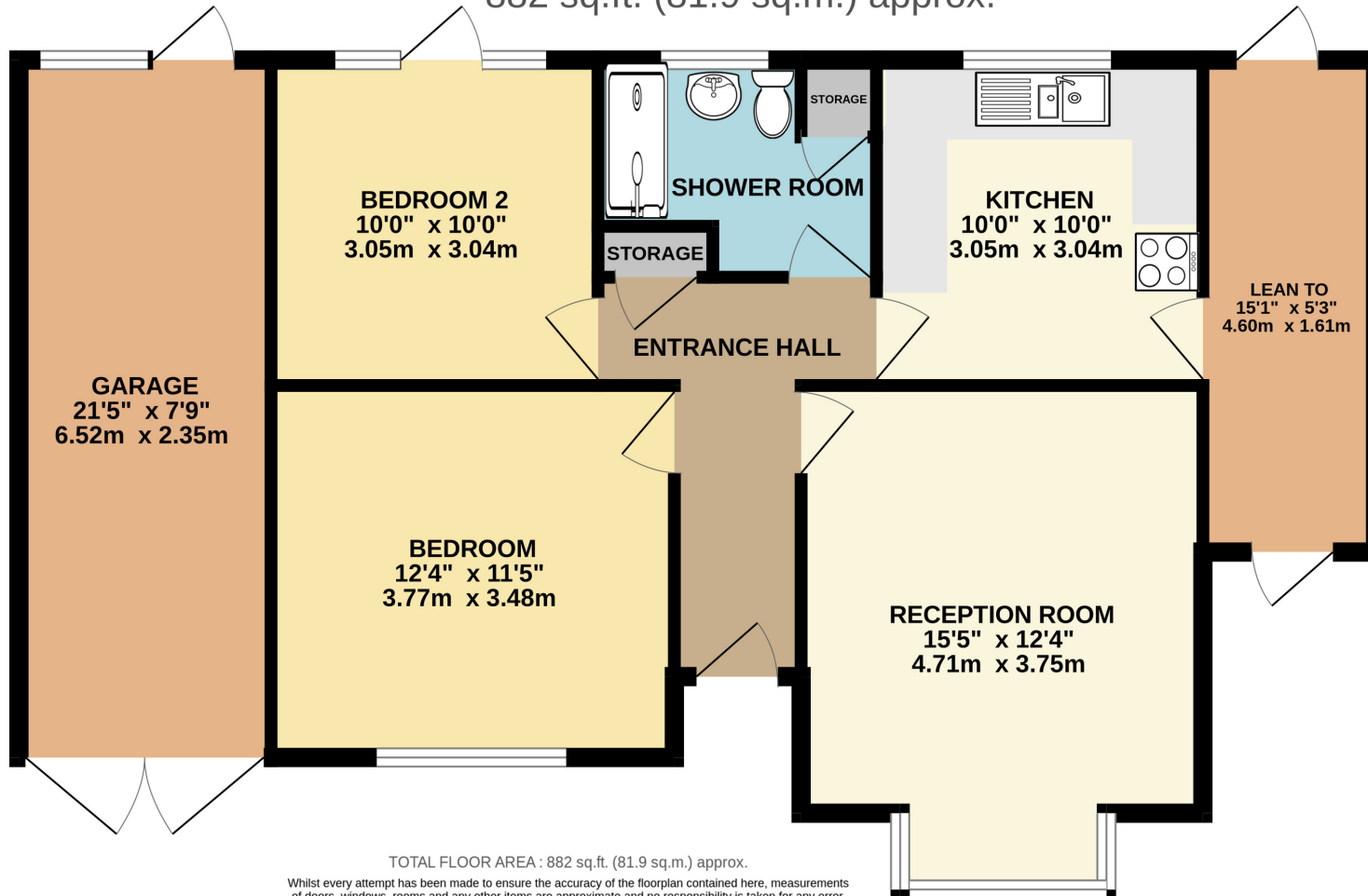
POINTS OF INTEREST

- NO ONWARD CHAIN
- DETACHED BUNGALOW
- GAS CENTRAL HEATING
- OFF ROAD PARKING
- GARAGE
- TWO DOUBLE BEDROOMS





GROUND FLOOR
882 sq.ft. (81.9 sq.m.) approx.



TOTAL FLOOR AREA : 882 sq.ft. (81.9 sq.m.) approx.

Whilst every attempt has been made to ensure the accuracy of the floorplan contained here, measurements of doors, windows, rooms and any other items are approximate and no responsibility is taken for any error, omission or mis-statement. This plan is for illustrative purposes only and should be used as such by any prospective purchaser. The services, systems and appliances shown have not been tested and no guarantee as to their operability or efficiency can be given.

Made with Metropix ©2025