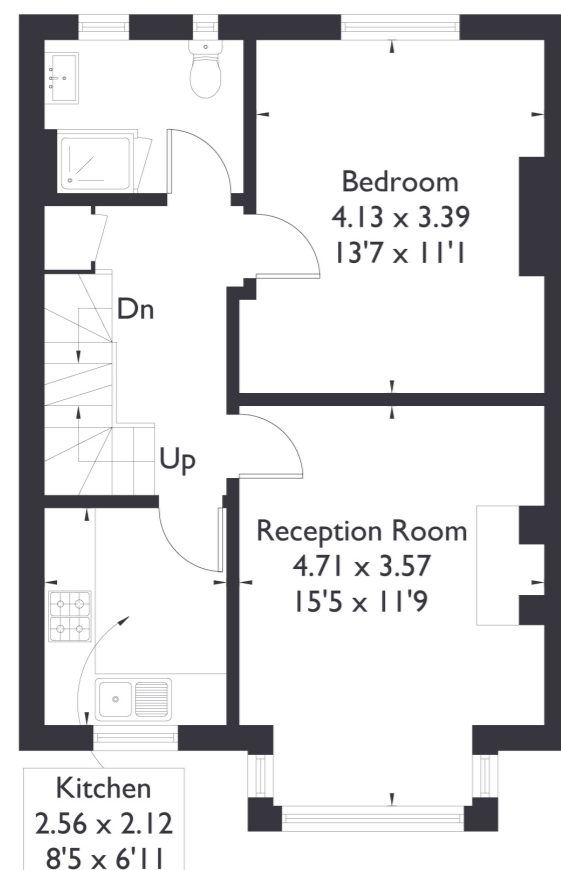


Camborne Avenue, W13

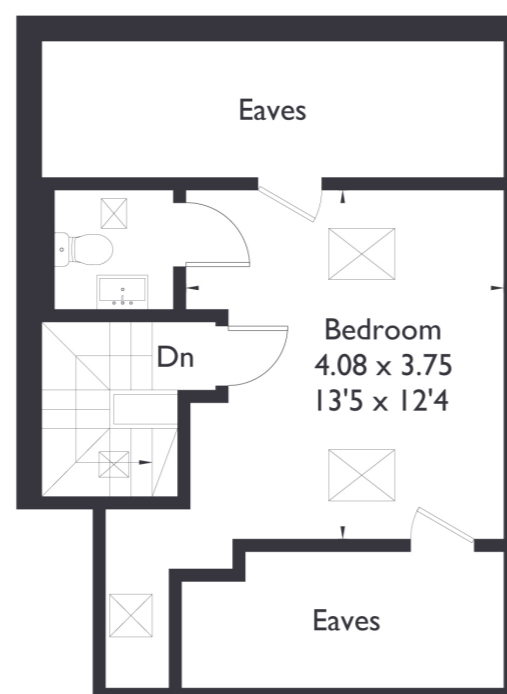
Approximate Floor Area = 93.2 sq m / 1003 sq ft
(Including Eaves)



Ground Floor



First Floor



Second Floor



2 BEDROOM FLAT

Camborne Ave, W13

Guide Price £500,000 - £525,000

Welcome to this beautifully presented split-level first floor flat, ideally located in the heart of Northfields.

Immaculately maintained and full of charm, this home offers a thoughtfully designed layout across two levels. On the first floor, you'll find a spacious double bedroom, a bright and inviting reception room, a modern family bathroom, and a separate, well-equipped kitchen—each space filled with natural light.

FEATURES

- Long Lease with Freehold
- Two Bedrooms
- One Bathroom/ W/C
- Separate Kitchen
- Fielding Primary School
- Lammas/Walpole Park Nearby
- Northfields Station/South Ealing Station
- EPC Rating C



2 BEDROOM FLAT

Camborne Ave, W13

Upstairs, the generous loft has been converted into a second double bedroom with the added convenience of a private W/C. This makes it a versatile space for guests, a home office, or a principal suite.

Perfectly positioned just five minutes from both Lammas and Walpole Parks, and only a stone's throw from the vibrant Northfields Avenue with its array of local shops, cafes, and Northfields Station, this property combines comfort, style, and convenience in one exceptional offering.

EPC Rating C.

