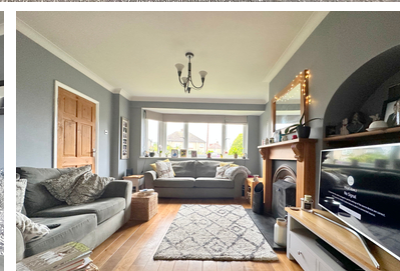
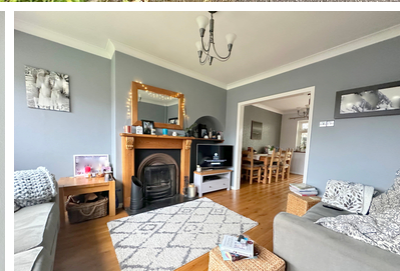


SOLD



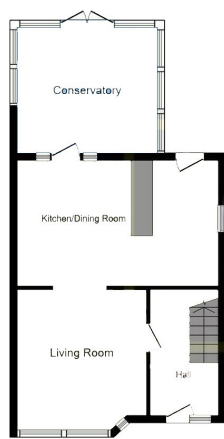
Langdale Gardens, Chelmsford

£500,000 Freehold

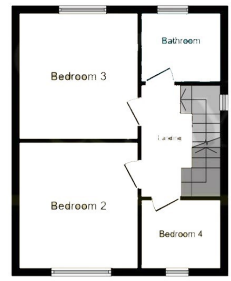
- Great Condition Throughout
- Extended Family Home
- Family Bathroom & Ensuite
- Popular Location

GUIDE PRICE £500,000 - £550,000

Conveniently located within close proximity of Chelmsford City Centre and mainline railway station, this extended four bedroom family home. The property is within half a mile of two local primary schools, a secondary school and benefits from local shops and services at Moulsham Street. Junction 17 of the A12 is approximately two miles away. Having been extended and improved by the current owners, the property benefits from spacious living accommodation, kitchen/Diner, Conservatory, Four bedrooms, Family bathroom and en-suite.



Ground Floor



First Floor



Second Floor