



Haycock Gardens, Clifton, Shefford, Bedfordshire, SG17 5QN

Offers in Excess of £800,000 Freehold







# Step Inside

Haycock Gardens

---



# About Shefford

Haycock Gardens

---

Spotlights, wooden flooring, access to all rooms on ground floor, stairs to first floor, storage cupboard.







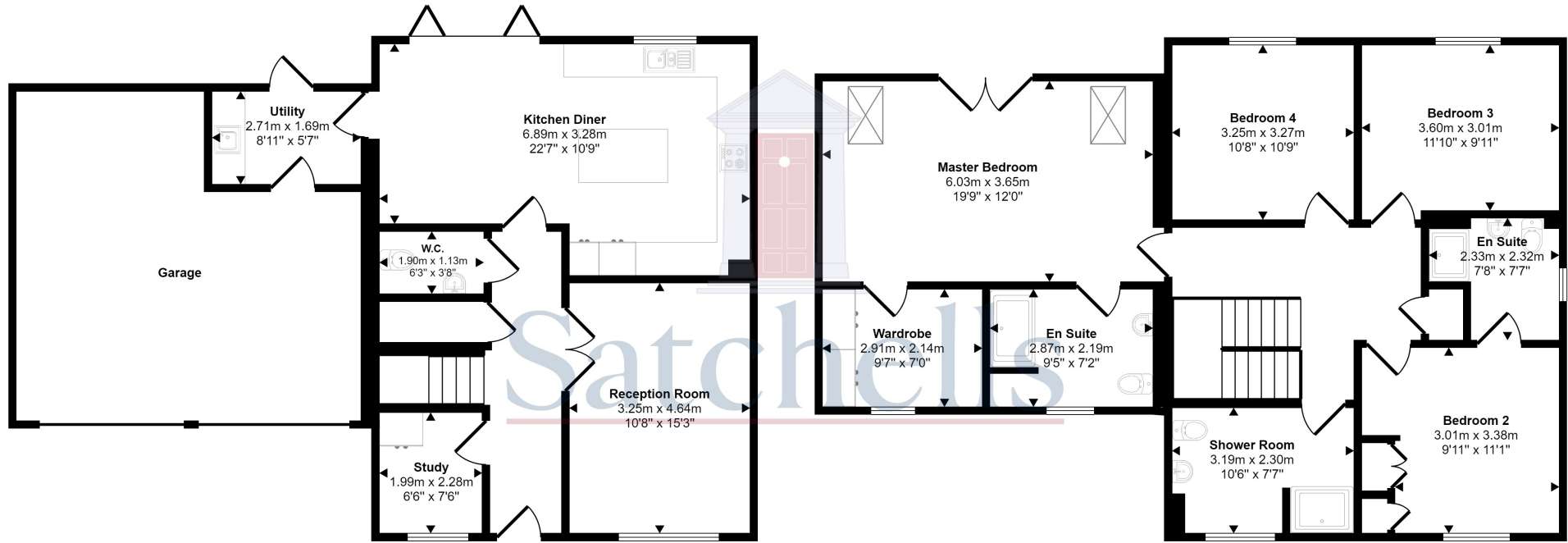
# Step Outside

## Haycock Gardens

Abt: 10' 8" x 15' 3" (3.25m x 4.65m) French doors leading in, double glazed windows to front, spotlights, wooden flooring.



Approx Gross Internal Area  
202 sq m / 2172 sq ft



Ground Floor  
Approx 101 sq m / 1089 sq ft

First Floor  
Approx 101 sq m / 1082 sq ft

This floorplan is only for illustrative purposes and is not to scale. Measurements of rooms, doors, windows, and any items are approximate and no responsibility is taken for any error, omission or mis-statement. Icons of items such as bathroom suites are representations only and may not look like the real items. Made with Made Snappy 360.



These particulars are a guide only and do not constitute an offer or a contract. The floorplan is for general identification purposes only and not to scale. All measurements and areas quoted are approximate and should not be relied upon if ordering furniture, white goods or carpets. Satchells have not tested any appliances or carried out any surveys, and buyers are advised to make their own satisfactory enquires into the state and condition of the property, utility services and tenure. Some or all images may have been enhanced using Photoshop or similar and the contents shown may not be included in the sale. You are advised to confirm the availability of the property on the day of your viewing. Under current Anti Money Laundering regulations buyers will also be required to provide proof of ID and also proof of funding.





Satchells  
18-20, High Street, Shefford, Bedfordshire, SG17 5DG  
Tel: 01462 813235  
E: [shefford@satchells.co.uk](mailto:shefford@satchells.co.uk) [www.satchells.com](http://www.satchells.com)

