



Newport Road
Caldicot
Monmouthshire
NP26

Offers In Excess Of £230,000

bettermove

Newport Road

Caldicot

Bettermove are proud to present 3 bedroom terraced house in Caldicot, available with no forward chain.

This property benefits from double glazing, and gas central heating throughout, with on street parking available.

The council tax band is C.

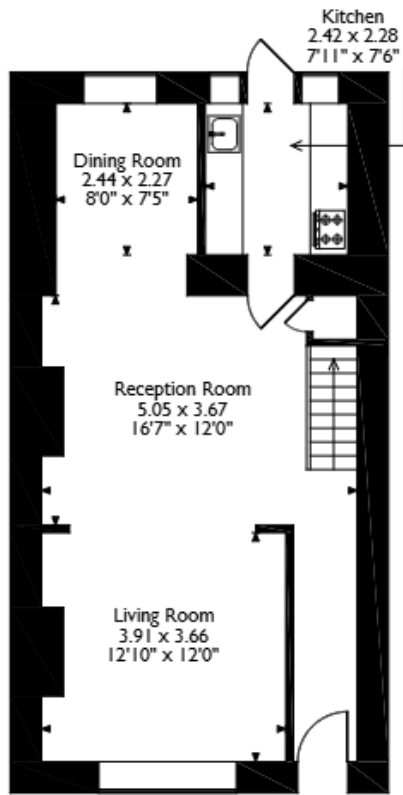
The interior of this beautifully presented property comprises two spacious reception rooms, dining room, and fitted kitchen on the ground floor. The first floor consists of two double bedrooms, and the family bathroom, with the third bedroom located in the converted loft room. The exterior boasts a private rear garden, with both patio and lawn areas, perfect for enjoying the summer months.

Located in the popular town of Caldicot, the property is close to a range of amenities, including shops, supermarkets, restaurants, pubs, and schools. Excellent transport links can be found from Caldicot Train Station (0.7 mile), a variety of local bus routes, and quick access to the M4.

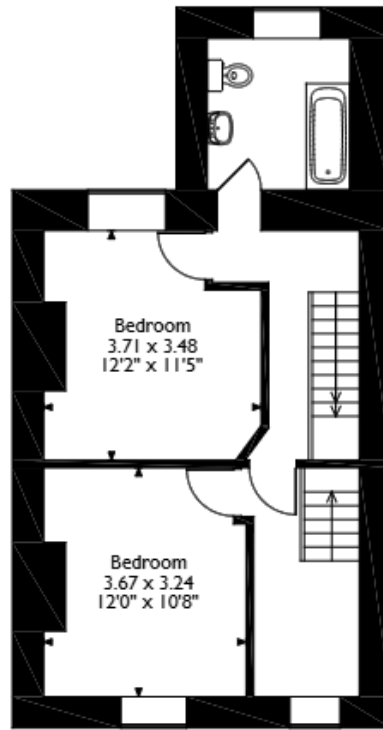
This exciting opportunity should not be missed! All enquiries can be made through Bettermove.



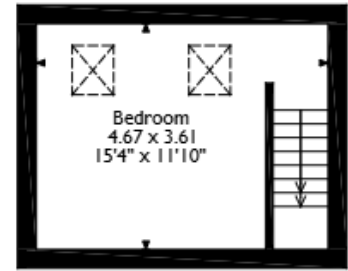
Newport Road, Caldicot
Approximate Gross Internal Area
114 Sq M/1227 Sq Ft



Ground Floor



First Floor



Second Floor

Please note that the location of doors, windows and other items are approximate and this floorplan is to be used for illustrative purposes only. Unauthorized reproduction is prohibited.



20-22 Bridge End, Leeds, LS1 4DJ
t: 0330 004 0050 e: hello@bettermove.co.uk
www.bettermove.co.uk