

The logo for Milburys, featuring the name in a white serif font on a dark blue background.

SALES LETTING MANAGEMENT

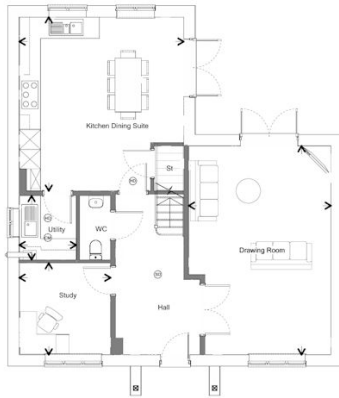


(Plot 1) 'The Fulbrook Show Home' Isabella Gardens, Chipping Sodbury, South Gloucestershire, BS37 6FW

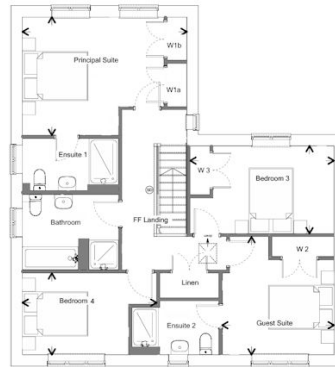
£900,000

PLOTS 1, 75, 76 & 85

Fulbrook



GROUND FLOOR



FIRST FLOOR

DIMENSIONS

Drawing Room	14' 3" x 20' 11"	4.4m x 6.4m
Kitchen Family Dining Suite	16' 1" x 17' 5"	4.9m x 5.3m
Utility	5' 8" x 6' 0"	1.7m x 1.8m
Study	9' 2" x 9' 2"	2.8m x 2.8m
Principal Suite	16' 6" x 11' 10"	5.0m x 3.6m
Guest Suite	11' 3" x 11' 10"	3.4m x 3.6m
Bedroom 3	14' 5" x 8' 9"	4.4m x 2.7m
Bedroom 4	13' 5" x 8' 3"	4.1m x 2.5m

09.09.2024 Please note that plot 75 is a handed version of the floor plans shown above.



(Plot 1) 'The Fulbrook Show Home' Isabella Gardens, Chipping Sodbury, South Gloucestershire BS37 6FW

'THE FULBROOK SHOW HOME' (Home 1). Follow links for [DRONE FOOTAGE](#) and [VIDEO WALK-THROUGH](#). Fantastic south-facing plot and a double garage! Open Daily, 10am-5pm - Come And View!

Welcome to Isabella Gardens, a prestigious new community of elegant semi-rural homes adjacent to Sodbury Common and the Golf Course in Chipping Sodbury, with countryside walks from the very doorstep and all the amenities of the historic bustling High Street just minutes' away in the opposite direction. From Walking to 'Waitrose' – this location is truly the best of both worlds! Boasting an impressive all-inclusive specification and enviable Green credentials (including photovoltaic panels built into the roof to generate your own electricity) Isabella Gardens features hedgerows and open spaces, with some homes set off private driveways or forming bijoux enclaves.

'The Fulbrook' is an outstanding detached double fronted family home, in most cases adjacent to the allotments or the Golf course– arguably some of the finest homes at Isabella Gardens! Featuring a welcome with 'wow!' before you even step over the threshold, every care has been taken to ensure maximum light, space and flow.

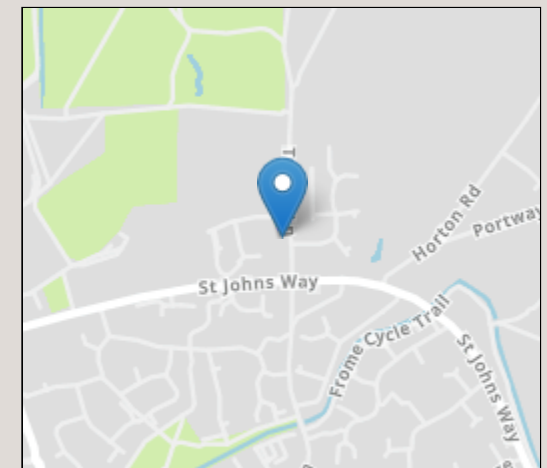
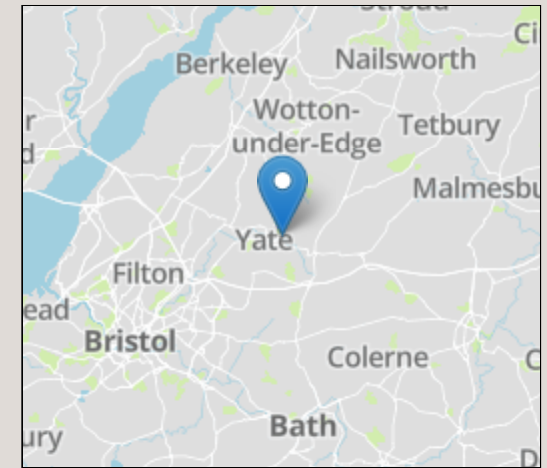
The spacious Hallway leads on to the very heart of this home- a superb Kitchen, Family and Dining suite, with light flooding in from many aspects. French doors lead onto the gardens for that all important al-fresco entertaining and such a beautiful arrangement ensures engagement with the gardens day in, day out - whatever the weather.

The sheer amount of space allows for many different options for furniture placement – dine whilst looking over the gardens or place some casual furniture here for a family seating area. This suite leads on to a useful Utility Room, with laundry facilities included Free of Charge.

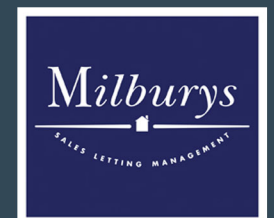
Enjoying beautiful finishing touches, this home boasts 'SMEG' appliances, including fridge-freezer, double oven, feature hood and projecting hob area - all carefully selected to complement the tasteful 'SYMPHONY' kitchen cabinetry*.

From the Hallway, enter the elegant, spacious dual-aspect Drawing Room via glazed double doors. This impressive room boasts light and space plus another pair of French doors onto the gardens. A second Reception/Study gives plenty of flexibility and is ideal for working from home, hobbies or a playroom.

Up the central staircase, the landing leads you to the sophisticated Principal Suite with convenient En-Suite facilities boasting an oversize shower, and wardrobes. The Guest Suite boasts its own generous En-Suite and wardrobes too - perfect for boomerang offspring or the grandparents to visit. Two further spacious bedrooms – one with wardrobes - are served by the Family Bathroom which boasts both a bath and separate shower enclosure. The linen cupboard is on the landing. All bathrooms are complemented by sleek chrome 'HANSGROHE' brassware whilst the elegant 'ROCA' sanitaryware is contemporary white, with semi pedestal fittings.



IMPORTANT NOTICE Milburys Estate Agents Ltd, their clients and any joint agents give notice that they have not tested any apparatus, equipment, fixtures, fittings, heating systems, drains or services and so cannot verify they are in working order or fit for their purpose. Interested parties are advised to obtain verification from their surveyor or relevant contractor. Statements pertaining to tenure are also given in good faith and should be verified by your legal representative. Digital images may, on occasion, include the use of a wide angle lens. Please ask if you have any queries about any of the images shown, prior to viewing. Where provided, floor plans are shown purely as an indication of layout. They are not scale drawings and should not be treated as such. Complete listings and full details of all our properties (both for sale and to let) are available at www.milburys.co.uk





www.milburys.co.uk