



**Flat 20 Saxon Court, Queen Street, Hitchin,
Hertfordshire, SG4 9TB**

£270,000 Leasehold

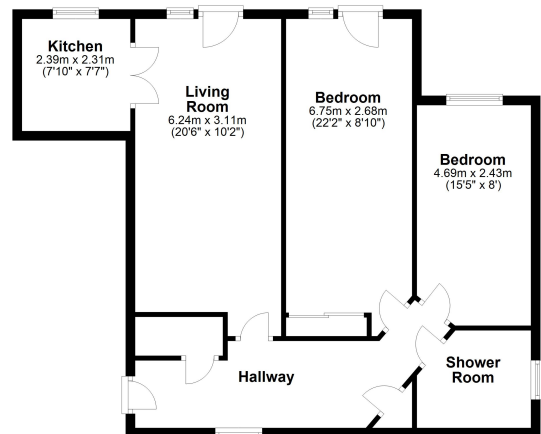
- Two Bedroom Retirement Apartment
- Two Juliet Balcony's
- Generous Accommodation
- Views over Gardens
- Communal Gardens
- Residents Lounge
- First Floor- close to lift
- No Onward Chain
- EPC Rating





Floor Plan

Approx. 74.4 sq. metres (800.8 sq. feet)



Total area: approx. 74.4 sq. metres (800.8 sq. feet)

All measurements shown are approximate and for guidance only. Garages and workshops are not included in any gross floor areas unless integral to the main building where they will be included.
Plan produced using PlanUp.



Agents note: All measurements are approximate and whilst every attempt has been made to ensure accuracy they are for general guidance only and must not be relied on. The fixture and fittings referred to have not been tested and therefore no guarantee can be given that they are in working order. Internal photographs are reproduced for general information and it must not be inferred that any item shown is included with the property.