



1 Cambridge Road, Langford, Bedfordshire, SG18 9SE

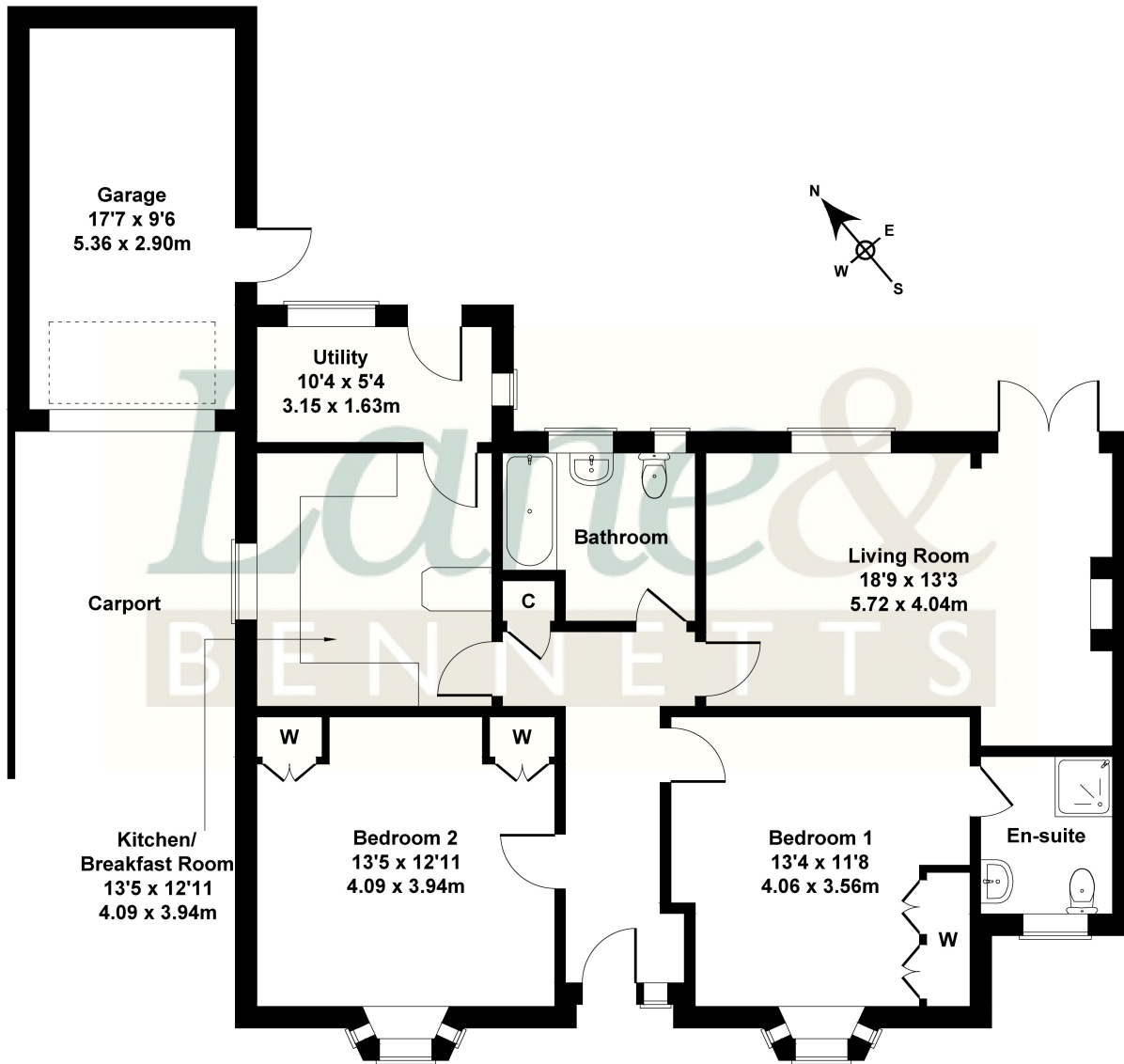
£450,000

DETACHED BUNGALOW with NO CHAIN Offered with living room with casement doors onto rear garden, kitchen/breakfast room with built in appliances and useful utility room, TWO DOUBLE BEDROOMS with built in wardrobes and an en-suite plus good sized bathroom. There is also a spacious loft via a pull down ladder that has the potential to provide further accommodation (if required) Ample off road parking via the driveway, car port and garage to the front and there is a private enclosed garden to the rear.

Lane &
BENNETTS

1 Cambridge Road Langford

Approximate Gross Internal Area
1215 sq ft - 113 sq m



GROUND FLOOR

Not to Scale. Produced by The Plan Portal 2024
For Illustrative Purposes Only.

- EXTENDED DETACHED BUNGALOW
- LIVING ROOM WITH CASEMENT DOORS TO REAR
- KITCHEN/BREAKFAST ROOM WITH BUILT IN APPLIANCES
- UTILITY ROOM
- TWO DOUBLE BEDROOMS WITH BUILT IN STORAGE/WARDROBES
- EN-SUITE + BATHROOM
- DRIVEWAY & AMPLE OFF ROAD PARKING
- CAR PORT + GARAGE
- NO CHAIN
- CLOSE TO BUS STOPS + A1 MOTORWAY + OPEN COUNTRYSIDE

