



Fennel Drive, Biggleswade, Bedfordshire. SG18





3 Bedroom End of Terrace House

£1,575 pcm

Additional charges may apply

This immaculately presented three bedroom end of terrace house, is located in the popular 'Saxon Gate' development. As you enter the property you will find a down stairs cloakroom off the hall way which then leads into a large large living room. Towards the back of the property there is a modern fitted kitchen/diner with patio doors leading straight out to the garden. Upstairs in this lovely home, there are three well sized bedrooms, all carpeted along with a three piece family bathroom. The master bedroom is further complemented by built in wardrobes and an en-suite shower room. This property also benefits from garage with power and off road parking. Available now. Call now to avoid missing out!

- Three bedroom house
- Close to local amenities
- En suite to the master bedroom
- Garage with power
- Sought after area
- Off road parking
- Rear enclosed garden
- Three piece bathroom suite
- Available NOW!
- EPC - C

This immaculately presented three bedroom end of terrace house, is located in the popular 'Saxon Gate' development. As you enter the property you will find a down stairs cloakroom off the hall way which then leads into a large large living room. Towards the back of the property there is a modern fitted kitchen/diner with patio doors leading straight out to the garden. Upstairs in this lovely home, there are three well sized bedrooms, all carpeted along with a three piece family bathroom. The master bedroom is further complemented by built in wardrobes and an en-suite shower room. This property also benefits from garage with power and off road parking. Available now. Call now to avoid missing out!

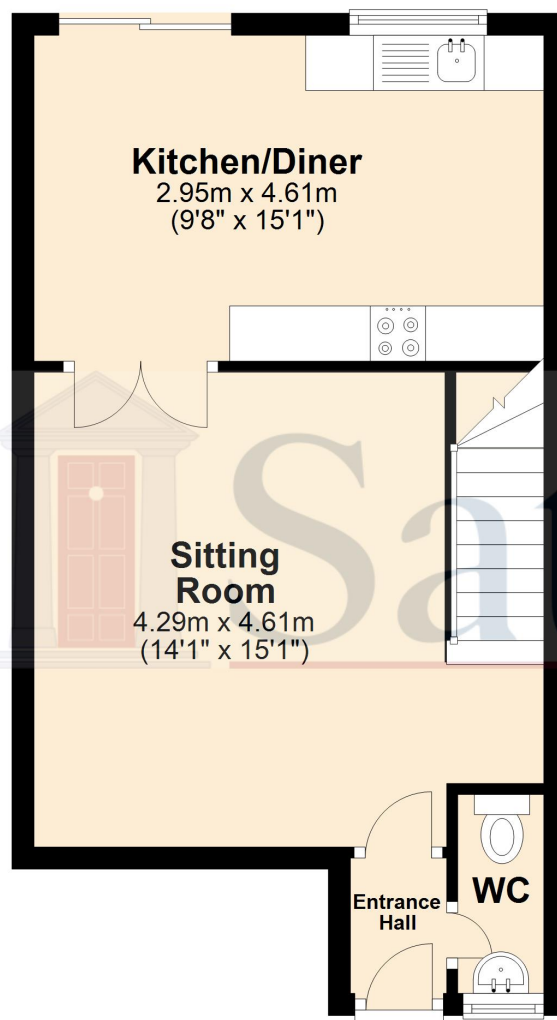
Council Tax Band - D

A security deposit is payable at the time of your offer being accepted by the landlord/s. This is equivalent to one weeks rent and for this property is £362.46. This does then form part of your five week holding deposit meaning once all satisfactory references are passed you will then be required to pay £1,449.84. For more information please contact the office.

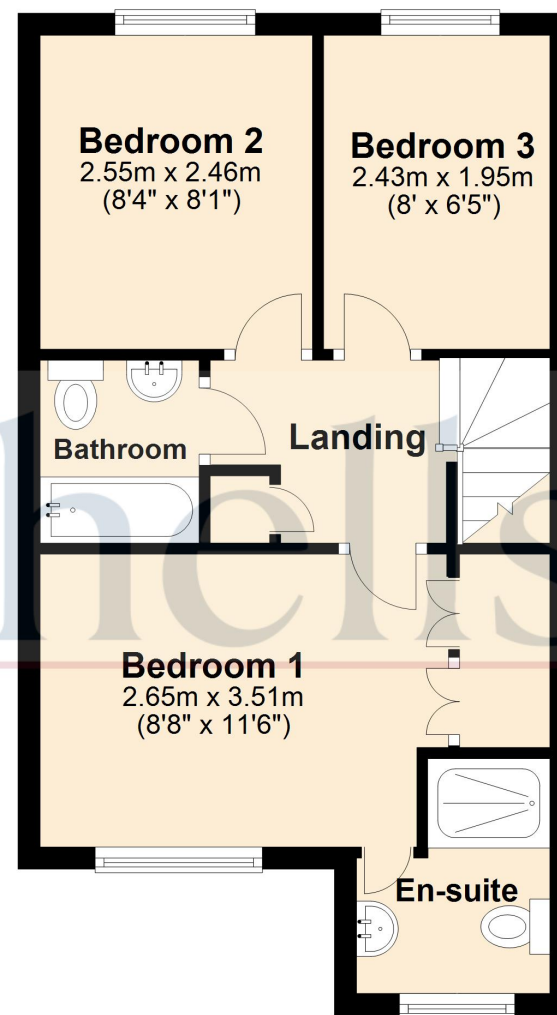


These particulars are a guide only and do not constitute an offer or a contract. The floor plan is for identification purposes only and not to scale. All measurements are approximate and should not be relied upon if ordering furniture, white goods and flooring etc. We have presented the property as we feel fairly describes it but before arranging a viewing or deciding to let, should there be anything specific you would like to know about the property please enquire. Satchells have not tested any of the appliances or carried out any form of survey and advise you to carry out your own investigations on the state, condition, structure, services, title, tenure, and council tax band of the property or the tenancy terms. Some images may have been enhanced and the contents shown may not be included in the letting. Satchells routinely refer to 3rd party services for which we receive an income from their fee. If you would like us to refer you to one of these services please ask one of our staff who will pass your details on. We advise you check the availability of the property on the day of your viewing.

Ground Floor



First Floor



For illustrative purposes only - NOT TO SCALE - Measurements shown are approximate.
The size and position of doors, windows, appliances and other features are approximate.

Plan produced using PlanUp.