

PAUL ALEXANDER
MORTGAGE CONSULTANTS

For all insurance and mortgage needs,
please call Paul Alexander Mortgage Consultants
on 020 8997 3915

LONDON'S LOCAL AGENT
enquiries@orchardsoflondon.com
020 3962 6000 | orchardsoflondon.com
Westworld West Gate London W5 1DT

SUTTON LANE NORTH

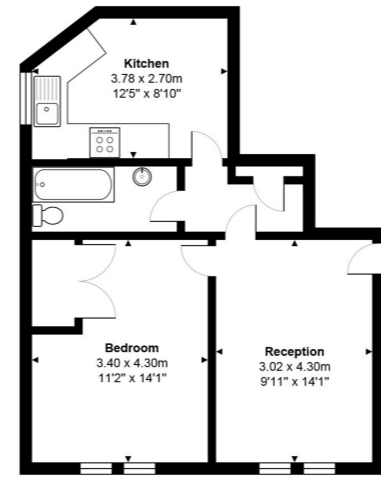
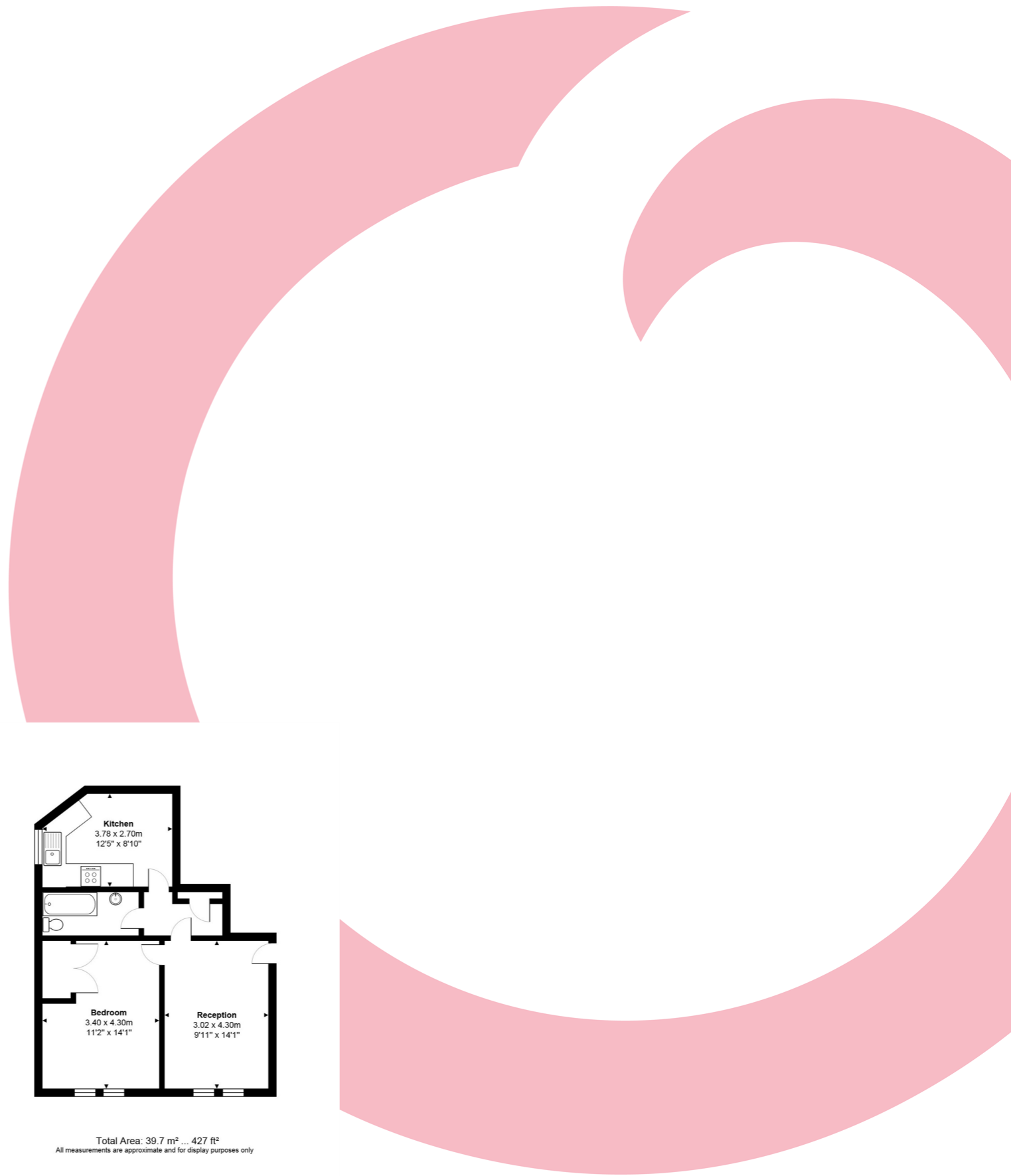
£1,382 pcm

- Period Mansion Block
- One bedroom apartment
- Desirable location
- Views over Turnham Green
- Kitchen/diner
- Close to local amenities
- New bathroom suite
- Available 2nd August

LONDON'S LOCAL AGENT
enquiries@orchardsoflondon.com
020 3962 6000 | orchardsoflondon.com
Westworld West Gate London W5 1DT

Orchards of London are delighted to offer to the market this impressive one bedroom apartment, finished to the highest standard throughout, ideally situated within this fantastic Mansion block overlooking the beautiful Turnham Green, benefitting from high ceilings and period features. The property comprises a bright and airy reception with feature fireplace, large master bedroom with sash window and fitted wardrobe, smart bathroom and modern fitted kitchen/diner. The building also benefits from geometric tiling in the communal hallway and beautiful stained glass windows throughout the stairways. Arlington Park Mansions is conveniently situated for the boutiques, bars and restaurants along the Chiswick High Road while the open spaces of Turnham Green are

opposite. The nearest transport links are Chiswick Park Tube station (District Line) and Gunnersbury Station (London Overground & District line) while motorists will benefit from easy access to the A4/M4



Total Area: 39.7 m² ... 427 ft²
All measurements are approximate and for display purposes only