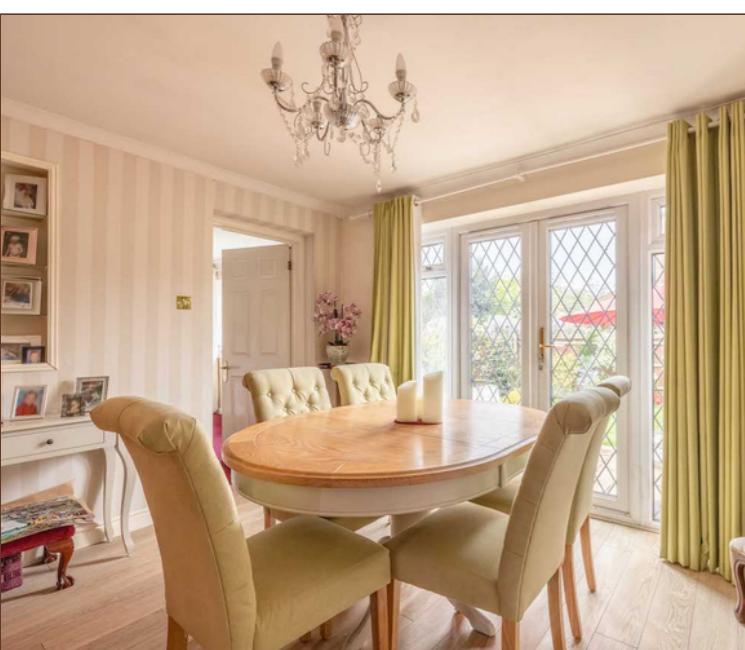


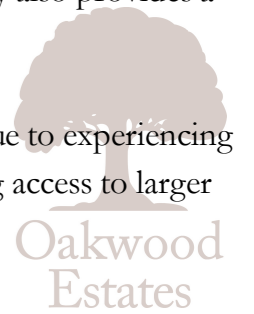
Situated on a quiet cul de sac in the highly sought after semi-rural area of Dorney Reach is this EXTENDED THREE bedroom semi-detached family home. Surrounded by countryside with the River Thames and the London Olympics rowing venue of Dorney Lake a stones throw away you can truly immerse yourself in the rural lifestyle all while having all local amenities as well as transport links into London only a short distance away.






The home itself consists of a spacious kitchen, a heavily extended living area which provides ample space for your family to grow and enjoy over the years. As part of the extension a third bedroom has been added which also has an en suite bathroom located on the ground floor. Patio doors from the living area provides access into the private enclosed rear garden. The first floor is home for the additional two Double bedrooms bedrooms and family bathroom.

Parking will never be an issue as driveway parking for several cars is included, the driveway also provides a route to the side access of the property.

This houses located in this secluded area are perfect for and intended to be family homes due to experiencing an excellent location with your choice of good schools, stunning surroundings and having access to larger towns such as Windsor & Maidenhead on your door step.



## Property Information

-  QUIET CUL DE SAC LOCATION
-  HIGHLY SOUGHT AFTER LOCATION
-  TWO BATHROOMS
-  THREE DOUBLE BEDROOMS
-  DRIVEWAY PARKING
-  EXTENDED TO THE REAR
-  CLOSE TO DORNEY LAKE & RIVER THAMES

					
x3	x2	x2	x3	Y	N
Bedrooms	Reception Rooms	Bathrooms	Parking Spaces	Garden	Garage

### Location

Located within semi rural Dorney Reach, just off from the river Thames and close by to the London Olympics rowing venue at Dorney Lake. Open fields and farm land surround and offer great walks and recreational facilities as well excellent local schools. Excellent transportation links with motorway access as well as Cross Rail, accessible via both Taplow & Burnham train stations providing fast direct train access into central London.

### Schools

#### PRIMARY SCHOOLS:

Dorney School  
0.1 miles away State school

Eton - Dorney School  
0.6 miles away Independent school

Braywick Court School  
1.4 miles away State school

#### SECONDARY SCHOOLS:

Eton - Dorney School

0.6 miles away Independent school

Burnham Grammar School  
2.2 miles away Grammar school

Desborough College  
2.2 miles away State school

### Transport Links

#### NEAREST STATIONS:

Elizabeth Line  
Taplow (1.7 miles)  
Maidenhead (2.7 miles)

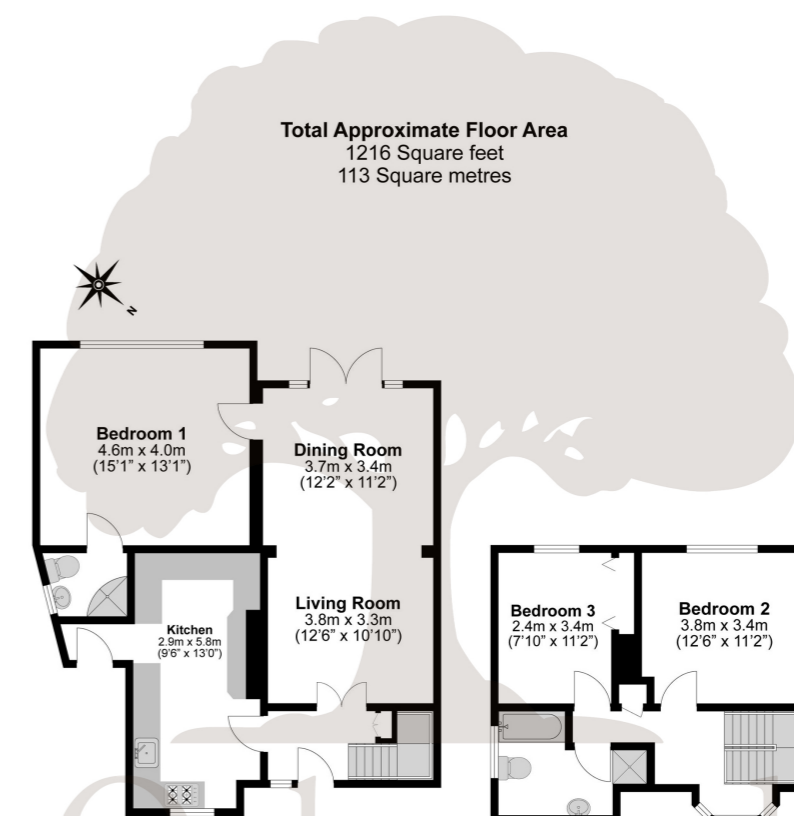
Direct Train To London Waterloo  
Windsor & Eton Riverside (4.0 miles)

The M4 (jct 7) is approximately 3 miles distant, as is the M40 (jct 2) and these in turn provide access to the M25, M3 and Heathrow Airport. British Rail connections to Paddington are available from Burnham and Maidenhead.

### Council Tax

Band D

## Floor Plan



Illustrations are for identification purposes only, measurements are approximate, not to scale.

Prospective purchasers should be aware that these sales particulars are intended as a general guide only and room sizes should not be relied upon for carpets or furnishing. We have not carried out any form of survey nor have we tested any appliance or services, mechanical or electrical. All maps are supplied by Goview.co.uk from Ordnance Survey mapping. Care has been taken in the preparation of these sales particulars, which are thought to be materially correct, although their accuracy is not guaranteed and they do not form part of any contract.

