

TO LET

Raynham Road,
Brackbury Village, W6

Terraced House
Brackbury Village

£950 p/w

4  3  3 

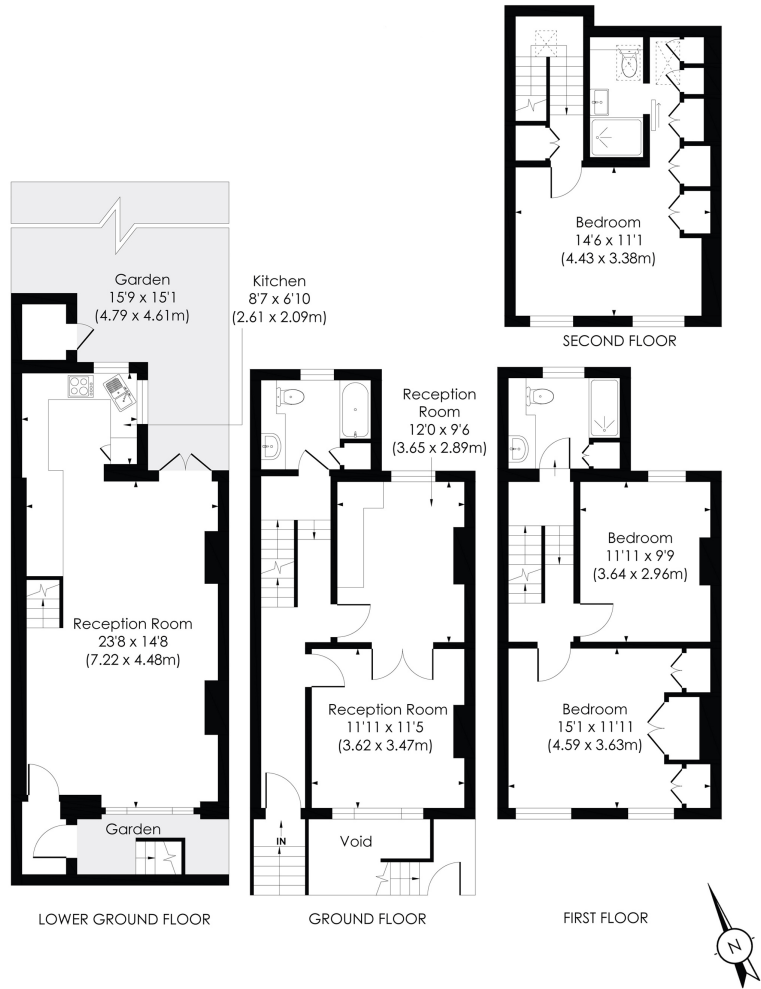


**horton
andgarton**

SALES / LETTINGS / PROPERTY MANAGEMENT

hortonandgarton.co.uk | Sales 020 8819 0510 | Lettings 020 8819 0511
172 King Street, Hammersmith, W6 0QU





RAYNHAM ROAD, W6

Approx. Gross Internal Floor Area

1628 Sq. ft/151.24 Sq. m

**horton
andgarton**

This floor plan has been prepared for the purpose of illustration only in accordance with the latest RICS code of measuring practice and is not to scale. All measurements and areas are approximate and whilst every effort has been made to ensure the accuracy of the plan contained here, no responsibility is taken for any error, omission or misstatement.



Victorian family home | Unfurnished | 1628 Sq' – 151.24 SqM | EPC rating D | Three/Four bedrooms - Three bathrooms | Brackenbury Village



hortonandgarton.co.uk

Sales 020 8819 0510

Lettings 020 8819 0511

172 King Street, Hammersmith, W6 0QU