



Day & Co
ESTATE AGENTS

28 Cavendish Street
Keighley
BD21 3RG



Plot 6 Old Drill Hall, Minnie
Street, Haworth, Keighley, West
Yorkshire, BD22 8PR

£299,950

T: 01535 664609

W: www.dayandcoestateagents.co.uk

E: keighley@dayandcoestateagents.co.uk

- NEW HOME
- TWO BEDROOMS + STUDY
- 1 PARKING SPACE

- MEWS TOWN HOUSE
- REAR GARDEN
- INTERNAL VIEWING ADVISED

SUMMARY

** THE OLD DRILL HALL IS A NEW DEVELOPMENT BY CANDELISA LTD SITUATED IN THE POPULAR VILLAGE OF HAWORTH, PLOT 6 IS A TWO BEDROOM + STUDY MEWS MID TOWN HOUSE WITH LARGE BI FOLD DOORS TO THE REAR GARDEN, 1 PARKING SPACE, CHOICE OF KITCHENS, OAK ENGINEERED FLOORING & CARPETS INCLUDED, UNDERFLOOR HEATING, INTERNAL VIEWING ADVISED **

FULL DESCRIPTION

Day & Co are pleased to be marketing Plot 6 on this desirable new development of seven homes by Candelisa Ltd, located close to the famous Main Street, with easy access to all that Haworth has to offer.

Sympathetically designed and will integrate nicely into their surroundings with private parking and garden.

Haworth is a rural hilltop village surrounded by dramatic moorland. Its fame is mainly thanks to the Bronte sisters who penned most of their novels at the Parsonage whilst their father carried out his duties at the church of St Michael's & All Angels. The picturesque cobbled Main Street hosts independent shops, tearooms, pubs and restaurants with pretty stone houses intertwined. The village also boasts the famous Worth Valley Railway.

Specification

Kitchens

- * Range of fitted base and wall mounted units with complimentary worktops
- * Neff integrated appliances include electric oven, hob, extractor, dishwasher, fridge and freezer.

Bathrooms

- * Laufen wash hand basin with vanity unit, concealed WC with wall mounted flush system, contemporary bath with chrome shower and shower screen.

- * Complimentary tiling

- * Heated towel rail

Shower rooms/Ensuite

- * Laufen wash hand basin with vanity drawer, concealed WC with wall mounted flush system, shower tray with glass shower screen with large shower head

- * Complimentary tiling

- * Heated towel rail

Cloakroom

- * Laufen hand basin with vanity unit, concealed WC with wall mounted flush system.

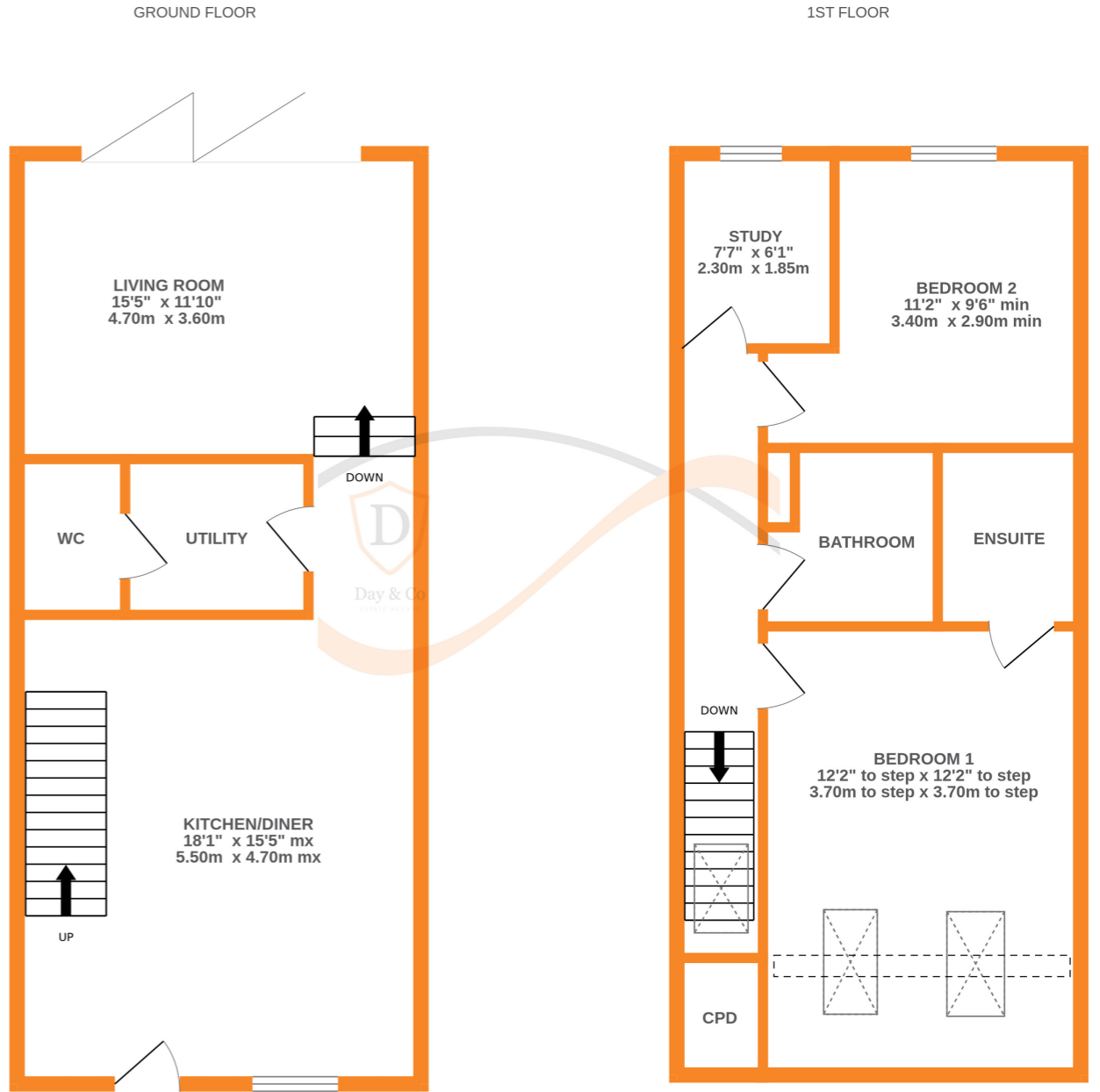
- * Complimentary tiling

Finishes, fixtures & fittings

- * Engineered oak flooring to the dining kitchen & utility

- * Underfloor heating to the ground floor

- * Radiators to the first floor



Whilst every attempt has been made to ensure the accuracy of the floorplan contained here, measurements of doors, windows, rooms and any other items are approximate and no responsibility is taken for any error, omission or mis-statement. This plan is for illustrative purposes only and should be used as such by any prospective purchaser. The services, systems and appliances shown have not been tested and no guarantee as to their operability or efficiency can be given. Made with Metroplan ©2024