



63 Fairthorn Road, , London, SE7 7FX

£1,950 PCM

AVAILABLE NOW. Stunning, modern and exceptionally large three bedroom, two bathroom apartment measuring over 1246 sq ft. You need to see the property to appreciate its size. Located on a popular development, the property is within 5 minutes walking distance to Westcombe Park mainline station (serving London Bridge in as little as 13 minutes and Cannon Street in 17 minutes). North Greenwich Jubilee Line underground station and O2 arena is 10 minutes by bus/car.

Charlton Shopping Park is a 5 minute walk away and has Marks and Spencer, Sainsbury, Pure Gym, Next, Argos, 24 hours Asda, Boots (with midnight pharmacy), Odeon cinema and a number of other stores and restaurants. The sights of historic Greenwich and the

Viewing by appointment with 1st avenue.

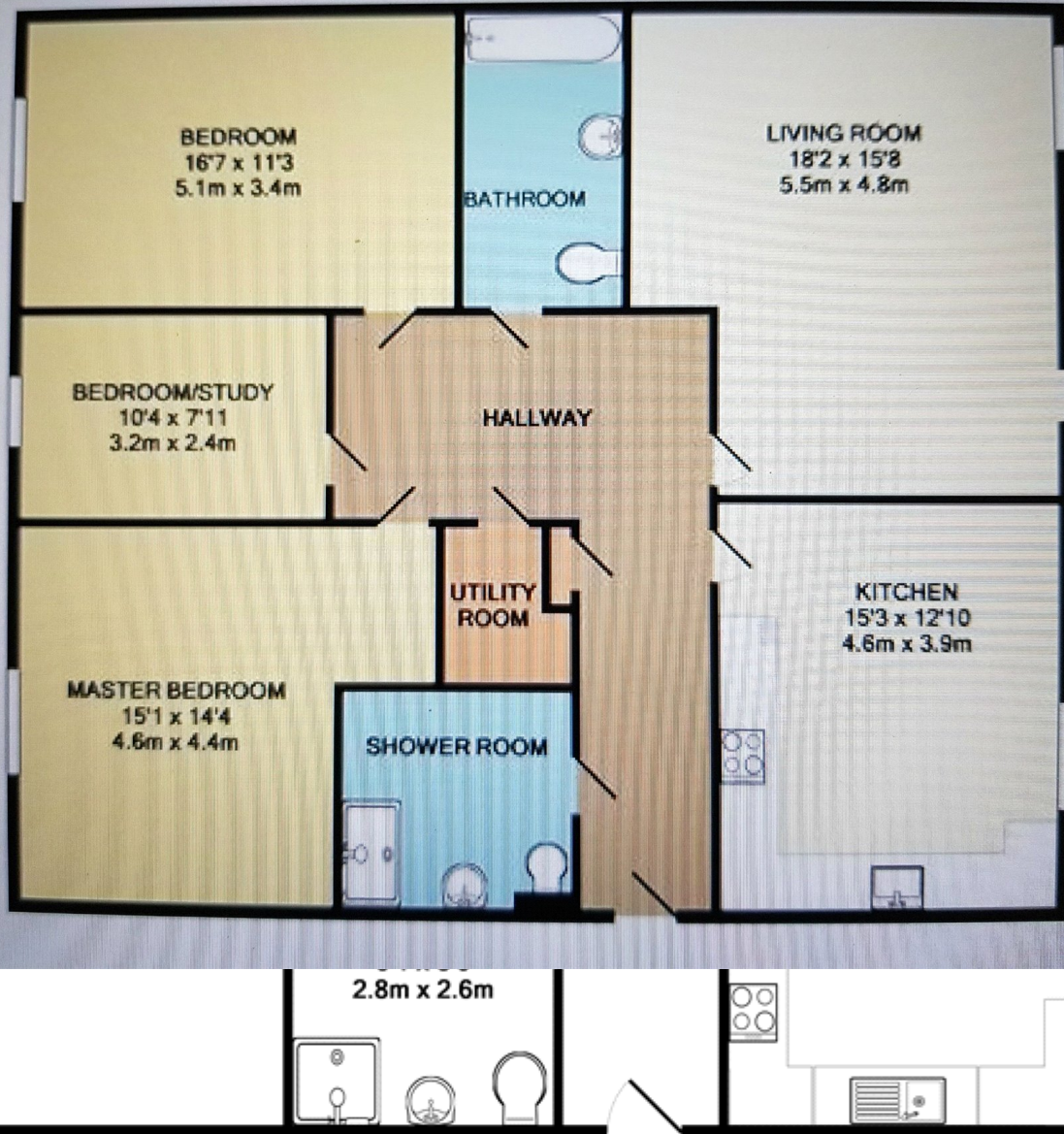
Call: 020 8293 8600

1st avenue, 128 Metcalfe Court, West Parkside, London SE10 0EL
email: info@1stavenue.co.uk

63 Fairthorn Road, ,
London, SE7 7FX

£1,950 PCM

1stavenue
Real Estate Services



TOTAL APPROX. FLOOR AREA 1313 SQ.FT. (122.0 SQ.M.)

Whilst every attempt has been made to ensure the accuracy of the floor plan contained here, measurements of doors, windows, rooms and any other items are approximate and no responsibility is taken for any error, omission, or mis-statement. This plan is for illustrative purposes only and should be used as such by any prospective purchaser. The services, systems and appliances shown have not been tested and no guarantee as to their operability or efficiency can be given

Made with Metropix ©2019

Viewing by appointment with 1st avenue.

Call: 020 8293 8600

1st avenue, 128 Metcalfe Court, West Parkside, London SE10 0EL
email: info@1stavenue.co.uk

1stavenue
Real Estate Services