



**Tewkesbury**

**01684 293246**

**Engall**

**Castle**

**.com**



## 1, East Street, Tewkesbury, GL20 5NR

This is a characterful property and certainly one that is becoming rarer, an affordable town centre end terrace home with the advantage of a garden at the rear.

The accommodation briefly comprises on the ground floor of a lounge with attractive fireplace with an open fire. A door leads through to the kitchen/dining room which benefits from a glazed door leading out to the rear garden.

The kitchen is fitted with a range of wall and base units with integrated electric hob and oven.

On the first floor there are two bedrooms and bathroom. The master bedroom has a fitted wardrobe and airing cupboard housing the gas central heating combination boiler. The bathroom is fitted with a panel bath with shower over; low level wc and pedestal wash basin.

Outside the courtyard garden is a blank canvass ready for pots and a patio table for that all important glass of wine!

Situated behind the High Street it offers easy walking distance to the wealth of health, sport, leisure, shopping and education amenities offered by the town.

The property has the benefit of gas central heating and some upvc double glazing.

Tewkesbury is a good commuter base providing excellent links via J9 M5 motorway and rail links at Ashchurch.



## Ground Floor

**Lounge** 13' 11" x 10' 8" (4.24m x 3.25m)

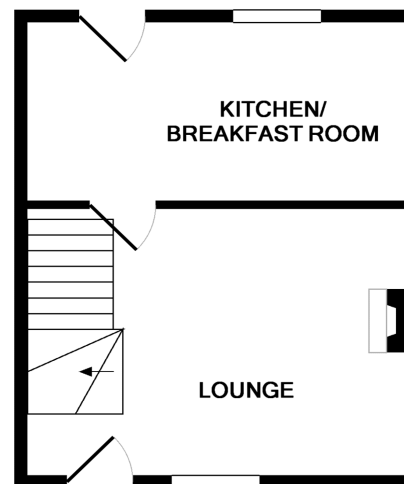
**Kitchen** 14' x 7' 4" (4.27m x 2.24m)

## First Floor

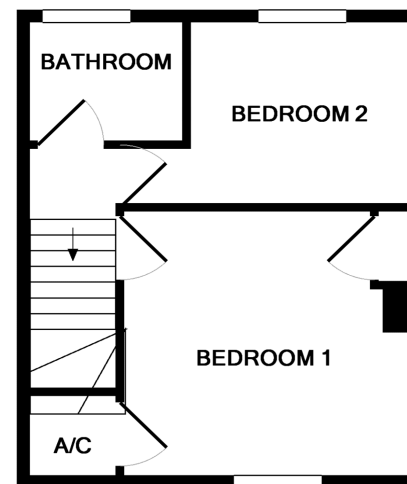
**Bedroom 1** 10' 9" x 9' 5" (3.28m x 2.87m)

**Bedroom 2** 7' 11" x 7' 4" (2.41m x 2.24m)

**Bathroom** 6' x 5' (1.83m x 1.52m)



GROUND FLOOR



1ST FLOOR

Whilst every attempt has been made to ensure the accuracy of the floor plan contained here, measurements of doors, windows, rooms and any other items are approximate and no responsibility is taken for any error, omission, or mis-statement. This plan is for illustrative purposes only and should be used as such by any prospective purchaser. The services, systems and appliances shown have not been tested and no guarantee as to their operability or efficiency can be given  
Made with Metropix ©2018

**£137,000**

155 High Street Tewksbury Gloucestershire GL20 5JP

Office opening hours: Monday - Friday 9am to 6pm, Saturday 9am to 4pm

email: [sales@engallcastle.com](mailto:sales@engallcastle.com)

**01684 293 246**



[www.engallcastle.com](http://www.engallcastle.com)

**Zoopla**



### Agents Note

These property details are set out as a general outline only and do not constitute any part of an Offer or Contract. Any services equipment, fittings or central heating systems have not been tested and no warranty is given or implied by Engall Castle Ltd that these are in working order. Buyers are advised to obtain verification from their solicitor or surveyor. Fixtures and fittings or other items are not included unless specifically described. All measurements, distances and areas are approximate and for guidance only and should not be relied upon for the purposes of fitting carpets or furniture etc. These property details and all statements within this document are provided without responsibility on behalf of Engall Castle Ltd or its employees or representatives and should not be relied on as statements of fact. Prospective purchasers must satisfy themselves as to the accuracy of all details pertaining to the property.

