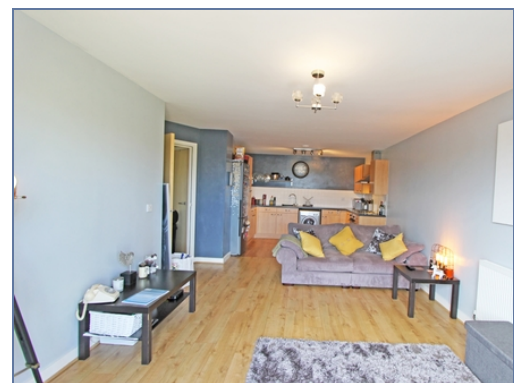




## Flat 12, Stephenson House, Wetherburn Court, MK22AF

**£135,000 Leasehold**

- Two bedroom
- En suite to master
- Walking distance to Bletchley train station
- Ideal first time purchase
- Recently redecorated throughout
- Second floor apartment
- Ground rent and service charge payable is £136pcm
- EPC Rating





This is a wonderful two-bedroom second floor apartment located in the popular area of Bletchley. The accommodation comprises an entrance hall, lounge/diner, kitchen, two bedrooms, en suite to master and family bathroom. The combined ground rent and service charge payable is £136 per calendar month. Further added benefits include being within walking distance to Bletchley Train Station and many local amenities nearby. There is 109 years remaining on the lease. Please call the elevation team to arrange your viewing today

## INTERIOR

### Entrance Hall

Doors leading to:

### Lounge Kitchen Diner

7.92m x 3.58m (26' 0" x 11' 9")

### Bedroom One

2.93m x 4.87m (9' 7" x 16' 0")

### En Suite

Fitted to comprise three piece suite

### Bedroom Two

4.42m x 2.87m (14' 6" x 9' 5")

### Family Bathroom

Fitted to comprise three piece suite

### Disclaimer

Whilst we have endeavoured to prepare our sales particulars accurately none of the services, appliances or equipment have been tested. A buyer should satisfy themselves on such matters prior to purchase. Any measurements or distances mentioned in these particulars are for guide reference only. If such particulars are fundamental to a purchase, buyers should rely on their own enquiries. All enquiries should be directed to Elevation Estate Agents in the first instance.