



**6 Magpie Close, Shenley Brook End,
MILTON KEYNES, Buckinghamshire, MK5
7JD**

£950 pcm Freehold

- Mews style home
- Two Double Bedrooms
- Modern fitted kitchen
- Enclosed private garden
- Driveway to front
- Cul-de-sac location
- EPC Rating C





Ground Floor

Lounge diner

4.60m x 3.93m (15' 1" x 12' 11")

Kitchen

3.40m x 1.94m (11' 2" x 6' 4")

First floor

Bedroom one

3.28m x 3.03m (10' 9" x 9' 11")

Dressing area

2.59m x 1.23m (8' 6" x 4')



Disclaimer

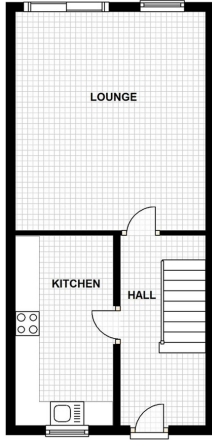
Whilst we have endeavoured to prepare our sales particulars accurately none of the services, appliances or equipment have been tested. A buyer should satisfy themselves on such matters prior to purchase. Any measurements or distances mentioned in these particulars are for guide reference only. If such particulars are fundamental to a purchase, buyers should rely on their own enquiries. All enquiries should be directed to Elevation Estate Agents in the first instance.



| Energy Efficiency Rating | | Environmental Impact (CO ₂) Rating | |
|---|-------------------------|--|---|
| | Current | Potential | |
| Very energy efficient - lower running costs | | | Very environmentally friendly - lower CO ₂ emissions |
| (92 to 100) A | | 92 | (92 to 100) A |
| (81 to 91) B | | | (81 to 91) B |
| (69 to 80) C | | | (69 to 80) C |
| (55 to 68) D | | | (55 to 68) D |
| (39 to 54) E | | | (39 to 54) E |
| (21 to 38) F | | | (21 to 38) F |
| (1 to 20) G | | | (1 to 20) G |
| Not energy efficient - higher running costs | | | Not environmentally friendly - higher CO ₂ emissions |
| England, Wales & N.Ireland | EU Directive 2002/91/EC | | England, Wales & N.Ireland |
| | | | EU Directive 2002/91/EC |



GROUND FLOOR



Floor Plans are for layout purposes only.
Plan produced using The Mobile Agent.