



Peringa, Windsor Road, Ramsey, Isle of Man. IM8 3EB

Bright and airy semi-detached true bungalow with easily maintained gardens and easy access to the amenities of Ramsey



£295,000 Freehold

PROPERTY DESCRIPTION

Peringa is a lovely semi-detached true bungalow set back from the ever-popular Windsor Road, superbly positioned in the heart of Ramsey with far-reaching views towards Snaefell. Well-suited to first-time buyers, downsizers or investors, this home offers an attractive setting, excellent convenience and a bright, welcoming feel.

Carefully maintained by the current vendors, the property is ready to move into with freshly fitted carpets and light-filled interiors. The accommodation flows seamlessly, with a sunroom leading into the kitchen and central hallway. The spacious sitting/dining room benefits from a bay window, stone fireplace and ample room for a dining table. A stylishly refurbished bathroom features a modern suite with p-shaped bath and shower over. The kitchen is dual aspect and well-appointed, while both bedrooms enjoy views over the rear garden, catching the sun for much of the day.

Throughout, the emphasis is on comfort, light and easy maintenance. Externally, the property is designed for low-maintenance living. The front garden features a Manx stone wall, lawn, raised bed and mature shrubs, with a paved driveway providing parking for two vehicles. To the side and rear, the gardens are mainly laid to lawn with a patio area, garden shed and secure boundaries—perfect for pets and outdoor enjoyment.

This is a delightful home in a popular location, ready to welcome its new owners.

FEATURES

- Semi-Detached True Bungalow
- Close to Mooragh Park, Ramsey Town Centre and Cottage Hospital
- Recently Re-Carpeted and Decorated
- Spacious Lounge, Kitchen and Sun Room
- 2 Double Bedrooms plus Modern Bathroom
- Easily Maintained Gardens
- Off Road Parking
- No Onward Chain

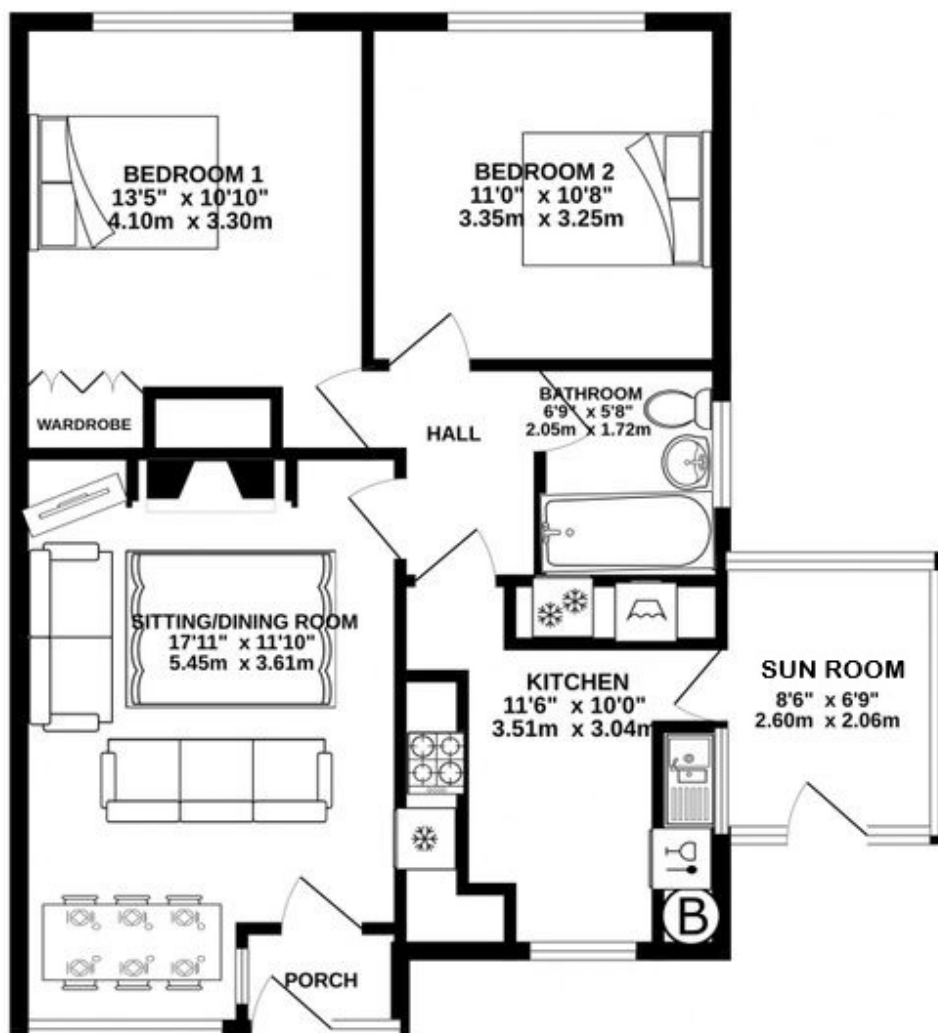


Property Images



FLOORPLAN

GROUND FLOOR
711 sq.ft. (66.0 sq.m.) approx.



TOTAL FLOOR AREA: 711 sq.ft. (66.0 sq.m.) approx.
Not to scale-for identification purposes only
Made with Metropix ©2024

DISCLAIMER: Whilst Manxmove Ltd believe that these details are correct, neither Manxmove Ltd or their clients guarantee their accuracy in any way. Consequently, these details are not to be used to form part of any legally binding contract. Prospective purchasers or tenants are advised to visit this property to satisfy themselves as to the correctness of these details. Please note, we use wide angle camera lenses in order to show as much of each room as possible. This is not intended to mislead any prospective purchasers or tenants in any way and an honest verbal description is always available prior to viewing if required.