



Flat 3 Oakwood Park, Hartfield Road, Forest Row. RH18 5DZ

£180,000 Leasehold

FOR SALE



SUMMARY DESCRIPTION

A well-presented one/two bedroom ground floor retirement property in the popular village of Forest Row on the outskirts of Ashdown Forest. The property is situated to the front of the development and is offered for sale with NO CHAIN.

PROPERTY DESCRIPTION

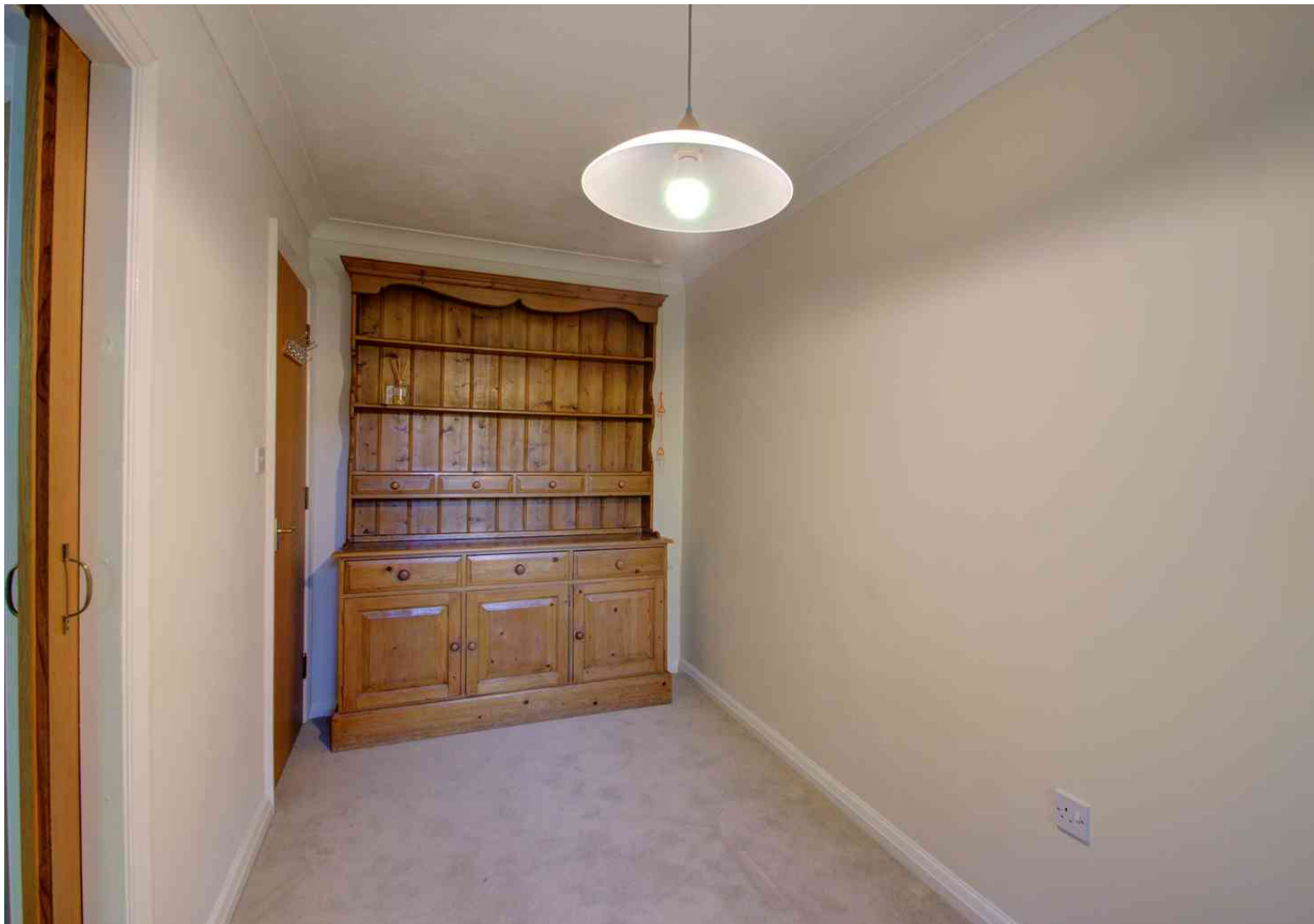
Oakwood Park is a scheme of retirement apartments built in the late 1980's by local developers Rydon Homes ideally situated in the very heart of this busy East Sussex village of Forest Row. The facilities include an entry-phone and alarm call system, linked to both the residence Manager and central control, and an active communal residents' Lounge. There is ample communal car parking space for residents and visitors.

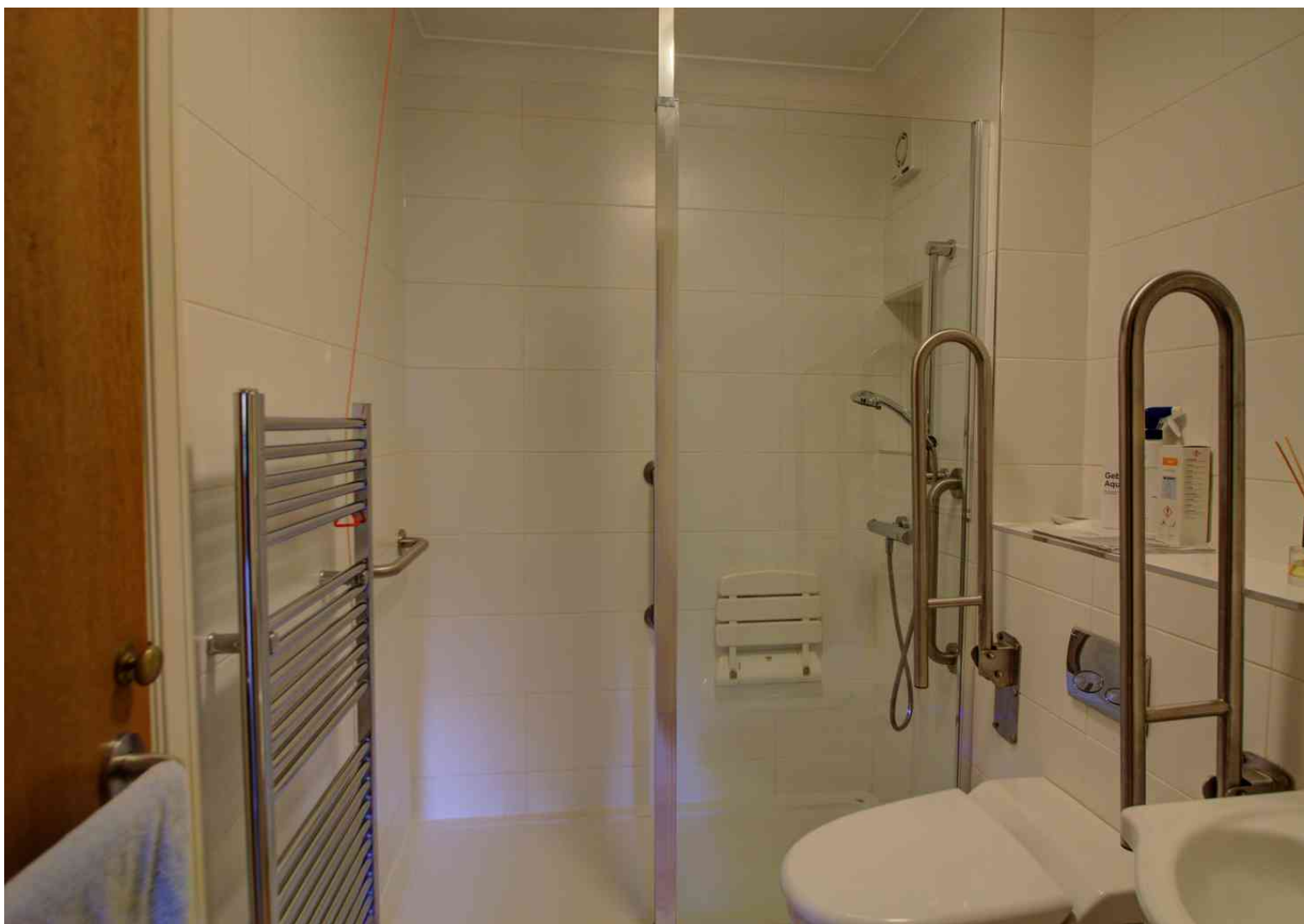
This ground floor flat is bright, well-presented and comprises entrance hall, living room, re-fitted kitchen with space for appliances and fitted oven, hob and extractor fan and hood, master bedroom with fitted cupboard, bedroom two/dining room and walk-in shower room. From the living room there are views across the front communal gardens and the flat has a private porch.

FEATURES

- Ground Floor Retirement Apartment
- Village Location
- 1/2 Bedrooms
- Living Room
- Re-fitted Kitchen
- Walk-in Shower Room
- Private Porch
- Communal Gardens
- EPC Band C



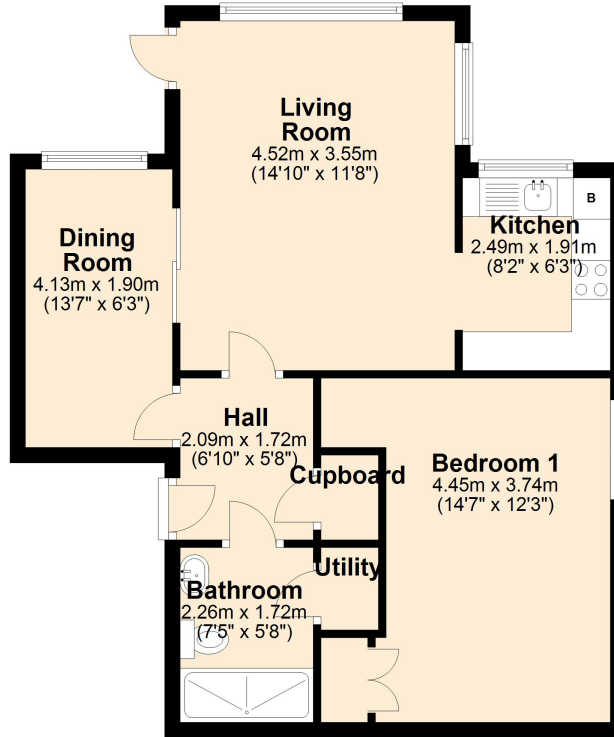




FLOORPLAN & EPC

Ground Floor

Approx. 54.6 sq. metres (587.6 sq. feet)



Total area: approx. 54.6 sq. metres (587.6 sq. feet)

Energy Efficiency Rating		Current	Potential
<i>Very energy efficient - lower running costs</i>			
(92-100)	A		
(81-91)	B		
(69-80)	C	75	76
(55-68)	D		
(39-54)	E		
(21-38)	F		
(1-20)	G		
<i>Not energy efficient - higher running costs</i>			
England, Scotland & Wales		EU Directive 2002/91/EC	