



Day & Co
ESTATE AGENTS

28 Cavendish Street
Keighley
BD21 3RG



20 Western Avenue, Riddlesden,
Keighley, West Yorkshire, BD20
5DJ

£175,000

T: 01535 664609

W: www.dayandcoestateagents.co.uk

E: keighley@dayandcoestateagents.co.uk

- Stone Built Detached Bungalow
- Single Garage
- Elevated Position With Far Reaching Views

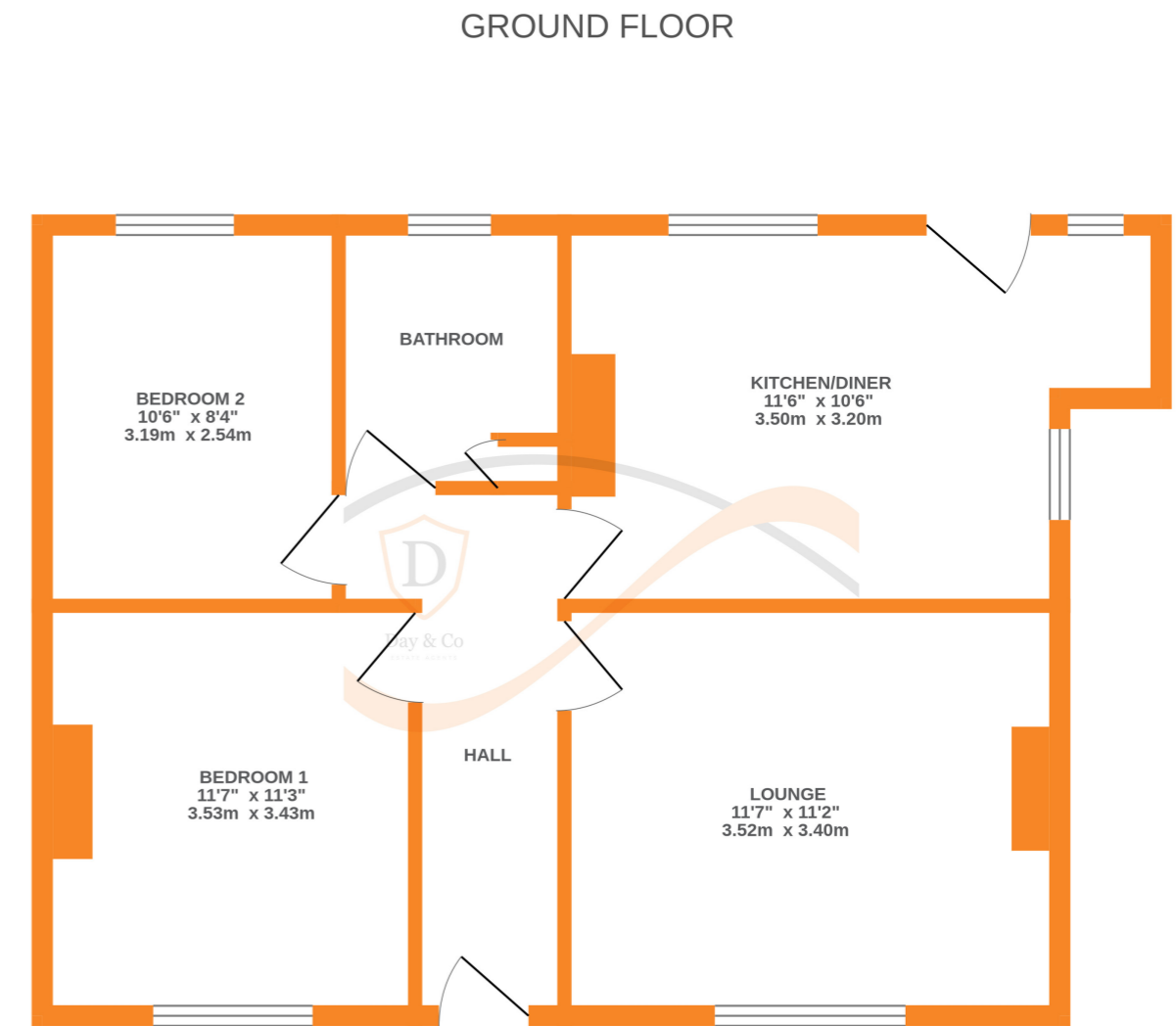
- Two Bedrooms
- Rear Garden & Front Patio
- NO CHAIN

SUMMARY

****A STONE BUILT 2 BEDROOM DETACHED BUNGALOW, ELEVATED POSITION IN POPULAR RESIDENTIAL LOCATION OF RIDDLESDEN WITH FAR REACHING VIEWS!!**** Having a garage, rear garden, front patio - OFFERED FOR SALE WITH NO ONWARD CHAIN!! EPC rating is D.

FULL DESCRIPTION

Situated in an elevated position with superb far reaching views in the popular residential location of Riddlesden is this stone built two bedroom detached bungalow. The accommodation comprises of an entrance hall, the lounge has radiator and double glazed window to the front. The dining kitchen has a range of base and wall mounted units, double glazed windows to the rear and side. There are two bedrooms, and the bathroom which has a three piece suite comprising of a bath with shower over, WC, wash hand basin. Externally there is a rear garden with summerhouse, a front patio and single garage. Offered for sale with no onward chain, EPC rating is D.



Whilst every attempt has been made to ensure the accuracy of the floorplan contained here, measurements of doors, windows, rooms and any other items are approximate and no responsibility is taken for any error, omission or mis-statement. This plan is for illustrative purposes only and should be used as such by any prospective purchaser. The services, systems and appliances shown have not been tested and no guarantee as to their operability or efficiency can be given.
Made with Metropix ©2024