

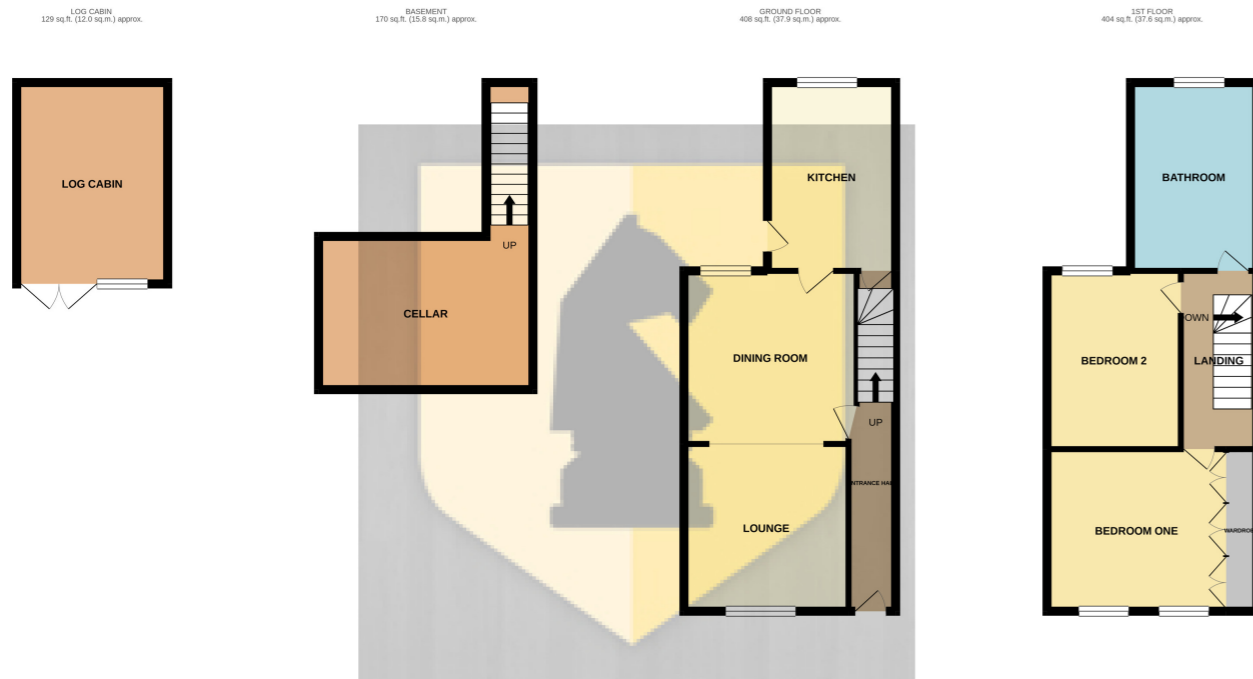
Make the right move!



**140 Stanhope Road, Queens Park,
Northampton. NN2 6JX.**

£245,000 Freehold

Edward Knight Estate Agents are delighted to bring to the market this beautifully refurbished two-bedroom mid-terrace home, situated within the ever popular residential area of Queens Park. Finished to a high standard throughout, the property has been thoughtfully improved with carefully selected fixtures and fittings that complement the character of the home, creating a stylish and welcoming living environment. The accommodation comprises a bright and spacious lounge opening into a well-proportioned dining area, providing an excellent space for both everyday living and entertaining. To the rear, a modern recently installed kitchen offers a practical and well designed layout. To the first floor are two well sized bedrooms and a contemporary four piece family bathroom. Externally, the property truly excels with a generous rear garden, ideal for relaxing or entertaining, complete with a substantial log cabin offering versatile additional space, perfect for a home office,



TOTAL FLOOR AREA : 1112 sq.ft. (103.3 sq.m.) approx.

Whilst every attempt has been made to ensure the accuracy of the floorplan contained here, measurements of doors, windows, rooms and any other items are approximate and no responsibility is taken for any error, omission or mis-statement. This plan is for illustrative purposes only and should be used as such by any prospective purchaser. The services, systems and appliances shown have not been tested and no guarantee as to their operability or efficiency can be given.
Made with Metropix ©2021



PROPERTY MISDESCRIPTIONS ACT 1991

The Agents have not tested any apparatus, equipment, fixtures and fittings, or services, so cannot verify that they are in working order or fit for purpose. The buyer is advised to obtain verification from his or her Professional Buyer. References to the Tenure of the property are based on information supplied by the Vendor. The Agents have not had sight of the title documents. The buyer is advised to obtain verification from their Solicitor. You are advised to check the availability of any property before travelling any distance to view.

Entrance Hall

Enter via a Upvc door. Radiator. Stairs to first floor.

Lounge

10' 9" x 10' 6" (3.28m x 3.20m) 10' 9" x 10' 6" (3.28m x 3.20m)
Double glazed windows to front aspect, Radiator. Coving.

Dining Room

11' 1" x 11' 3" (3.38m x 3.43m) Double glazed window to rear aspect. Radiator. Coving

Kitchen

12' 4" x 8' 4" (3.76m x 2.54m) Recently fitted kitchen suite comprising of a range of base and eye level units with worktops over. Inset one and a half bowl sink and drainer unit with mixer tap over. Fitted electric oven. Fitted gas hob with extractor fan mounted over. Integrate fridge/freezer. Tiling to water sensitive areas. Space and plumbing for a washing machine and dishwasher. Double glazed window to the rear aspect. Double glazed door to the rear garden.

Landing

Loft hatch. Doors leading to:

Bedroom One

14' 0" x 10' 7" (4.27m x 3.23m) Two double glazed window to front aspect. Built in Wardrobes with hanging space, draws and display units. Automatic lights when opening. Radiator. Coving.

Bedroom Two

11' 1" x 8' 7" (3.38m x 2.62m) Double glazed window to rear aspect. Radiator.

Bathroom

12' 3" x 8' 4" (3.73m x 2.54m) Four piece suite comprising: Low flush Wc. vanity with wash hand basin. Free standing bath with free standing tap. Double shower cubicle with rain fall shower head. Heated chrome towel rail. Obscured double glazed window to rear aspect.

Cellar

Single compartment cellar.

Rear Garden

Enclosed large rear garden. Newly landscaped with a large decking area leading onto a large lawn area. Paved steps into a paved patio area with built in lights surrounding leading to a newly built log cabin. There is a large storage space situated underneath the kitchen and access via timber doors.

Log Cabin

13' 2" x 9' 10" (4.01m x 3.00m) Double glazed window to the garden. Power and lighting.

