



Holly Court, Greenroof Way, LONDON, SE10 0BP

£450,000

Great value two bedroom, two bathroom apartment situated in the popular Millennium Village development, this well appointed property has a private balcony overlooking the landscaped communal gardens.

Further benefits include an allocated parking space, residents communal garden, 24 hour concierge services and onsite shops and pharmacy. The development is located a short walk from North Greenwich tube station (Jubilee Line), the Emirates Cable Cars and the O2 with the many attractions within, including bars and restaurants. It is also within walking distance to Sainsburys, Aldi, Asda and Ikea. The development is also home to an excellent primary school, nursery and Eco park.

Viewing by appointment with 1st avenue.

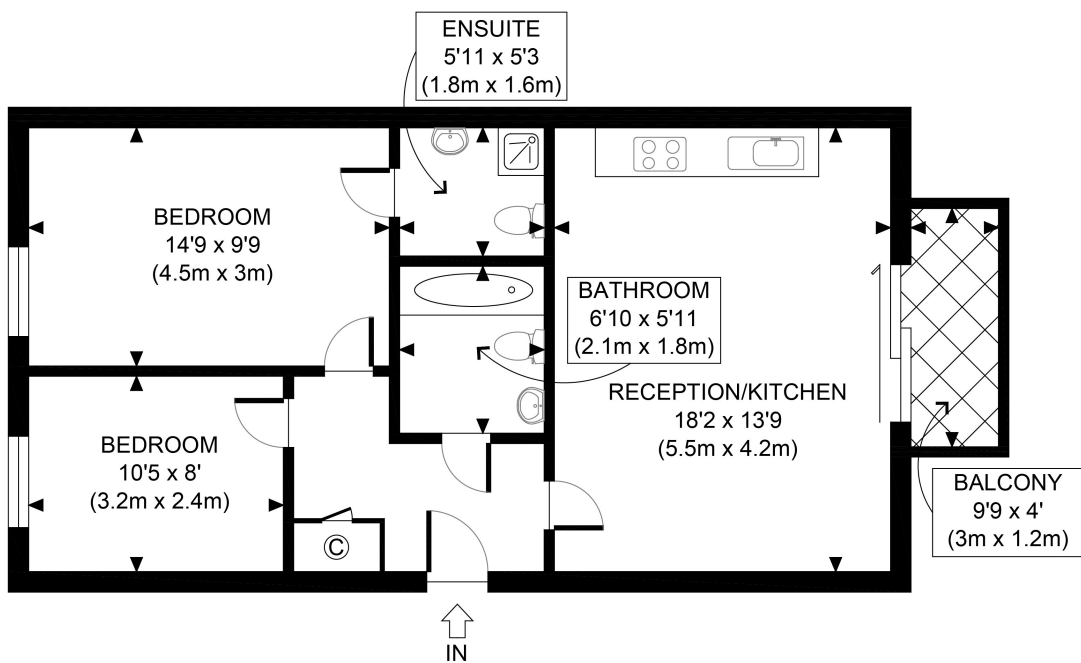
Call: 020 8293 8600

1st avenue, 128 Metcalfe Court, West Parkside, London SE10 0EL
email: info@1stavenue.co.uk

Holly Court, Greenroof Way, LONDON, SE10 0BP

£450,000

1stavenue
Real Estate Services



THIRD FLOOR
GROSS INTERNAL
FLOOR AREA 640 SQ FT

APPROX. GROSS INTERNAL FLOOR AREA 640 SQ FT / 59 SQM

Disclaimer: Floor plan measurements are approximate and are for illustrative purposes only. While we do not doubt the floor plan accuracy and completeness, you or your advisors should conduct a careful, independent investigation of the property in respect of monetary valuation

Copyright **photoplan360**

Viewing by appointment with 1st avenue.

Call: 020 8293 8600

1st avenue, 128 Metcalfe Court, West Parkside, London SE10 0EL
email: info@1stavenue.co.uk

1stavenue
Real Estate Services