



6 The Ridings, Bexhill-on-Sea, East Sussex,
TN39 5HU

£399,950

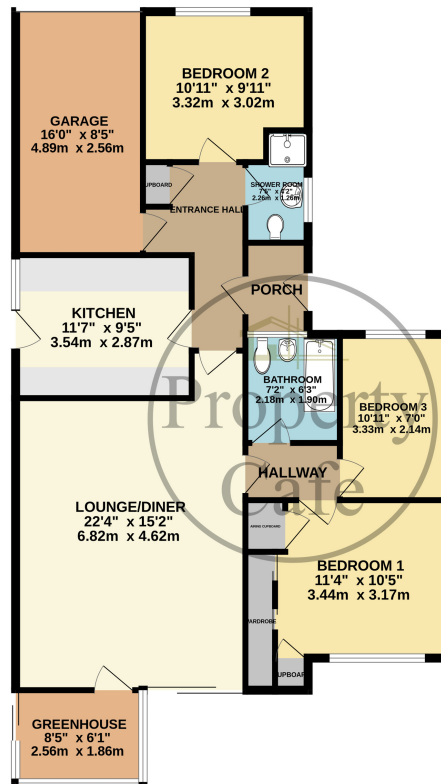


- Detached Three Bedroom Bungalow
- Spacious Lounge/Diner
- Family Bathroom & Additional Shower Room
- Off-road Parking
- Integral Single Garage
- Private West Facing Rear Garden
- Sought After Quiet Position
- Neutrally Decorated & Presented Throughout
- Gas Central Heated & Double Glazed Throughout
- Sold With No Onward Chain
- Viewing Highly Recommended





GROUND FLOOR
1108 sq.ft. (103.0 sq.m.) approx.



TOTAL FLOOR AREA : 1108 sq.ft. (103.0 sq.m.) approx.

Whilst every attempt has been made to ensure the accuracy of the floorplan contained here, measurements of doors, windows, rooms and any other items are approximate and no responsibility is taken for any error, omission or mis-statement. This plan is for illustrative purposes only and should be used as such by any prospective purchaser. The services, systems and appliances shown have not been tested and no guarantee as to their operability or efficiency can be given.
Made with Metropix 12/2024