



NAPIER CLOSE, SALFORDS

HOUND & PORTER

FIND A HOUSE. MAKE IT HOME

NAPIER CLOSE, SALFORDS



- Four great bedrooms, two bathrooms
- Beautifully fitted kitchen/family room
- Offered fully furnished with no forward chain
- Fabulous living room with patio doors
- Study/office with views over the garden
- Gated private road of only six homes
- Completely redecorated throughout
- Garage and private driveway
- Wonderful enclosed sunny garden
- High end integrated appliances and white goods

NAPIER CLOSE, SALFORDS

Napier Close, Salfords, Redhill, RH1

Approximate Area = 1502 sq ft / 139.5 sq m

Limited Use Area(s) = 56 sq ft / 5.2 sq m

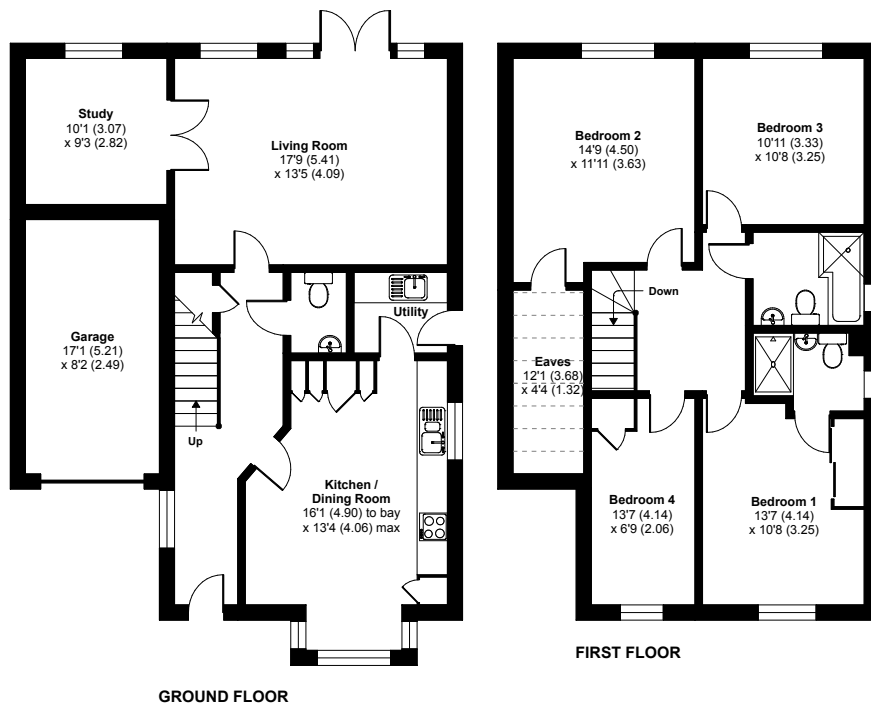
Garage = 148 sq ft / 13.7 sq m

Total = 1706 sq ft / 158.4 sq m

For identification only - Not to scale



Denotes restricted
head height



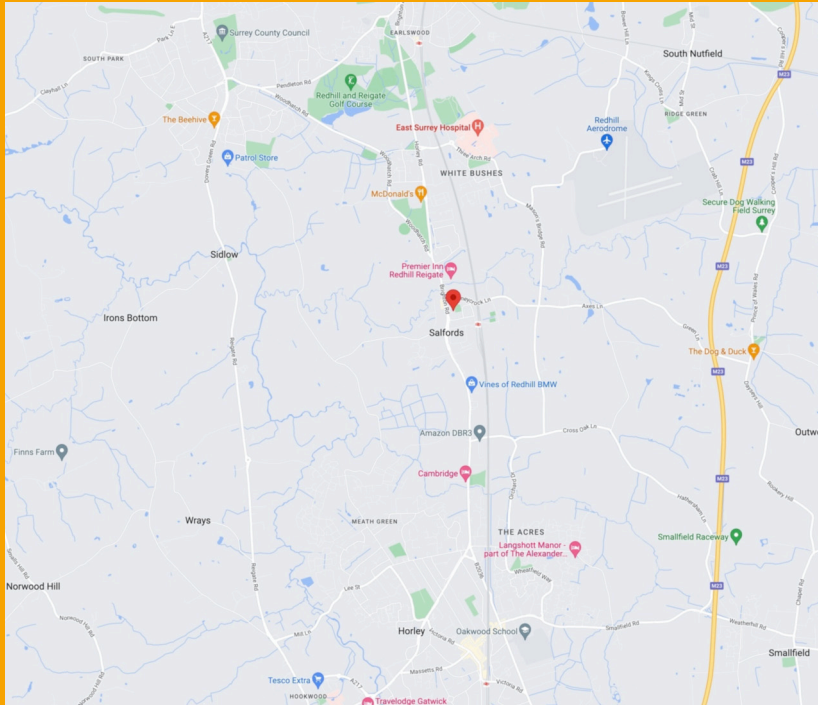
A fantastic four bedroom detached family home in Salfords village, within easy reach of Reigate, Redhill and Horley town centres. Step inside and you immediately feel the quality of this modern home, having been completely redecorated in September 2022, this is a property you can move into immediately. The fabulous kitchen/dining room is the chefs dream, with ample granite work surface, integrated Neff appliances and a wonderful marble dining table with chairs. The utility space houses a top of the range Miele washing machine and tumble dryer. Your bright and airy living room has patio doors to the garden and the study/office has lovely views over the garden.

Off an ample first floor landing are four really good size bedrooms, the master with ensuite and a beautifully fitted family bathroom. All bedrooms have electric blinds with wireless control and smart home integration, custom made shutters and new light fittings. The rear garden is fully enclosed and there is a private drive and garage. This fantastic home nestles at the end of a small, gated development and can be sold fully furnished at the right price, please take a peek at our video.



Floor plan produced in accordance with RICS Property Measurement Standards incorporating International Property Measurement Standards (IPMS2 Residential). © nichecom 2021. Produced for Hound and Porter Limited. REF: 906180

NAPIER CLOSE, SALFORDS



LOCATION

This fabulous home is located just outside Redhill, Reigate and Horley town centres in the very popular Salfords village. The nearby market town of Reigate is brimming with boutique shops, cafes and restaurants, Priory Park offers lovely dog walks and a central children's play area is accompanied by a central cafe. Salfords main line station is under half a mile away and offers great links to London and the South Coast.

TRANSPORT

Within easy reach of the A25, M23, M25 and Gatwick Airport
A bus service providing access to Redhill, Reigate and north of the M25

DISTANCE TO STATIONS FROM PROPERTY BY ROAD

- 0.3 miles to Salfords Station
- 2.8 miles to Horley Station
- 3.1 miles to Redhill Station



DID YOU LIKE WHAT YOU'VE JUST SEEN?

Get in touch. We are more than happy to arrange a viewing, assist you with the complicated paperwork and find you the best local businesses to help during and after your move. We look forward to hearing from you.

58 Castle Walk
Reigate, Surrey
RH2 9PX

01737 317880
hello@houndandporter.co.uk