



Stanley Road, London, W3 8GQ

**Cow & Co**  
LONDON



An exceptionally spacious one bedroom apartment with a south west facing balcony set in the prestigious Acton Gardens development. Located on the first floor this fabulous home has a large modern open plan kitchen reception room. The property is bright and airy and further benefits from the large south west facing balcony. With a great double bedroom benefitting with lots of built in storage and a large and luxurious bathroom this great home would make a fabulous first home or is a great buy to let opportunity.

Located on Stanley Road which borders Chiswick and Acton.

Located in the communal gardens is a secure gate which leads directly to South Acton Station (Overground). Chiswick Park tube station (District line) and Acton Town (District and Piccadilly) underground are within half a mile.

Chiswick High Road with all eclectic mix of independent shops, great restaurants and pubs is half a mile away as is Chiswick Business Park.

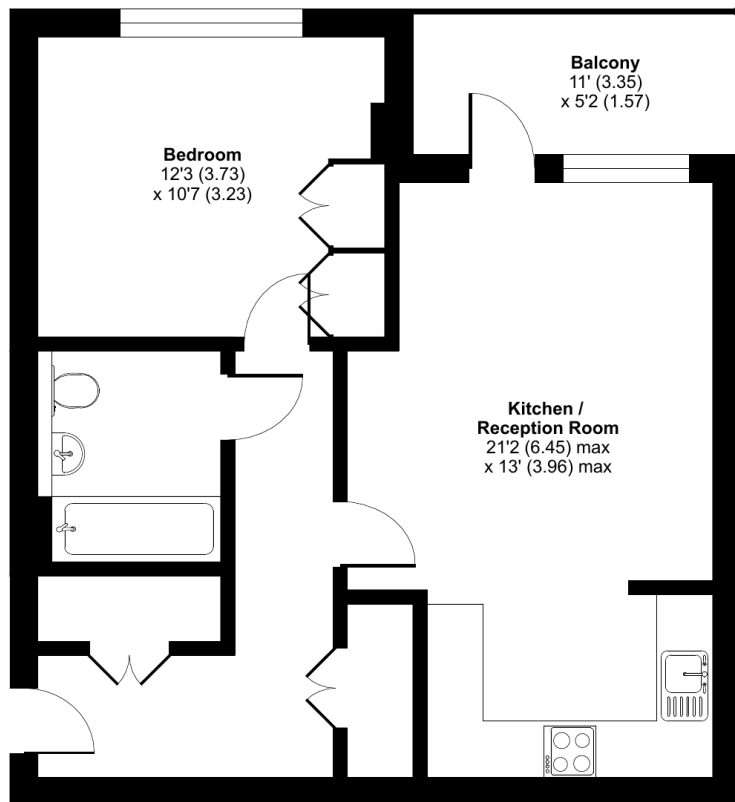


- Secure bicycle storage
- One double bedroom apartment set within the prestigious Acton Gardens development
- Large South West facing Balcony
- Has EWS1 certificate
- Immaculate condition throughout
- Secure entrance system
- Lift
- Long lease

# Ravenswood Court, Stanley Road, London, W3

Approximate Area = 571 sq ft / 53 sq m

For identification only - Not to scale



FIRST FLOOR



Floor plan produced in accordance with RICS Property Measurement Standards incorporating International Property Measurement Standards (IPMS2 Residential). © nchecon 2023. Produced for Cow & Co Properties Ltd. REF: 952164

Tel: 0208 065 0010  
Email: [thehub@cowandco-london.com](mailto:thehub@cowandco-london.com)  
Web: [cowandco-london.com](http://cowandco-london.com)

Agents note: All measurements are approximate and whilst every attempt has been made to ensure accuracy they are for general guidance only and must not be relied on. The fixture and fittings referred to have not been tested and therefore no guarantee can be given that they are in working order. Internal photographs are reproduced for general information and it must not be inferred that any item shown is included with the property.

# Cow & Co

LONDON