



May Blossom Barn, Back Lane, Chapel Allerton, BS26 2PG

£530,000 Freehold

COOPER
AND
TANNER



May Blossom Barn, Back Lane, Chapel Allerton, BS26 2PG

 3  2  2 EPC D

£530,000 Freehold

Description

Hidden away on a quiet, leafy, village lane is this thoughtfully designed three-bedroom barn conversion, with attractive stone façade, modern neutral colour palette against wood, glass and exposed stonework, vaulted ceilings and galleried landing, with driveway parking and small, south-west facing garden.

Designed and converted in 2006 to retain the character and charm of the old barn whilst creating a bright, modern living space, the large windows and glass panelled doors, allow natural light to flood in and highlight the exposed stonework, warm wooden flooring and vaulted entrance hall. Glass panelling and French doors between the hall and sitting room add to the feeling of space and light. The sitting room also benefits from French doors which open out to the south-west facing terrace, and the room features a prominent exposed brick chimneybreast with wood lintel. The galleried hallway leads through to the kitchen, dining room and cloakroom. The kitchen is fitted with a range of pale-coloured, traditional style wall and base units topped with contrasting wooden work surfaces with a matching breakfast bar, and there is plenty of space for appliances and a range style cooker. The adjoining utility provides extra cupboards and

space for other appliances. A versatile room adjacent to the kitchen, which was most probably designed as a dining room, is currently used as a bedroom but could easily be a study or snug. Upstairs, there are two double bedrooms with vaulted ceilings. The principal bedroom has built-in, mirrored wardrobes and a smart ensuite shower room. There is also a small, single bedroom which could be used as a dressing room for the second bedroom. These two rooms share a modern family bathroom.

Outside, the south-west facing garden and paved terrace run along the front of the house bordered by mature hedging and tall fencing creating a private haven. French doors from the sitting room open out onto the terrace, extending this sociable space inside and out. There is an area of level lawn with established shrubs and borders. A private driveway provides parking for two vehicles, which is accessed over a shared driveway from the road. The property is on private drainage, and the vendors tell us the biodigester is shared with May Tree Farm and is on their land. The property is warmed by LPG central heating with underfloor heating throughout the ground floor and radiators on the first floor.









Location

The tranquil, rural, yet accessible hamlets of Chapel Allerton and Stone Allerton lie between the historic and thriving communities of Wedmore, Axbridge and Cheddar, with easy access to the A38 with direct links to Bristol International Airport and the M5 junction 22. Local amenities include The Valley Smokehouse at The Wheatsheaf Inn which has a kitchen store, coffee shop and alfresco pizza oven, and the Ad Astra Cider Barn, a local social hub. The nearby village of Wedmore provides a wide range of retail and leisure facilities including a selection of boutique shops, a newsagents/general stores, chemist, butcher shop, delicatessen, post office, fishmongers, grocers, a range of eateries and three public houses. Excellent sports' facilities are available including the Isle of Wedmore Golf Club, Bowls Club, Football and Tennis Clubs; sailing on Cheddar reservoir; and further sporting facilities at Kings Fitness and Leisure. The area has a wealth of opportunities

for walking, cycling and horse riding. The Cathedral City of Wells is about 12 miles away whilst the larger centres of Bristol and Bath are approximately 23 and 30 miles respectively. The property also falls within the popular Wessex Learning Trust, three-tier school system. Local private schools include Sidcot, Millfield and Wells Cathedral Schools.



Local Information Chapel Allerton

Local Council: Somerset

Council Tax Band: E

Heating: LPG

Services: Mains water and electricity, private drainage

Tenure: Freehold



Motorway Links

- M5



Train Links

- Highbridge and Burnham
- Weston-super-Mare

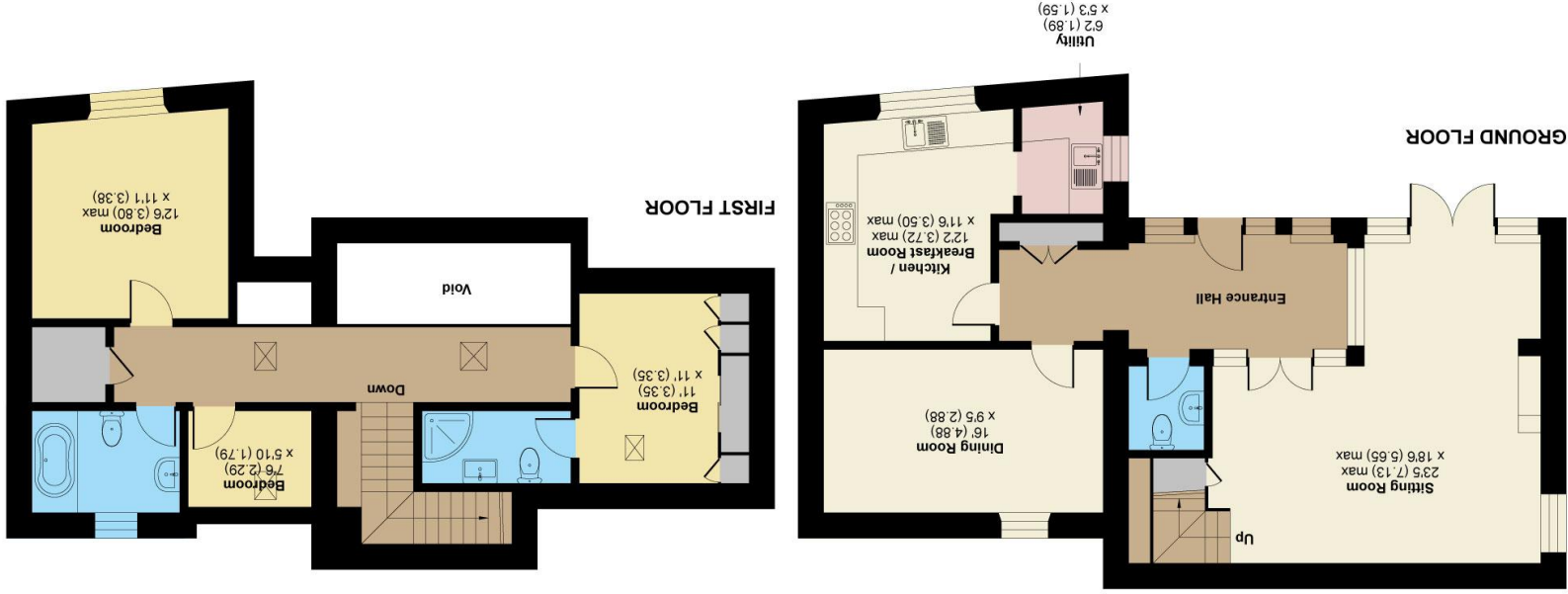


Nearest Schools

- Wedmore First School
- Hugh Sexey Middle School
- Kings of Wessex Academy

Back Lane, Chapel Allerton, Axbridge, BS26

Approximate Area = 1442 sq ft / 133.9 sq m (excludes void)
For identification only - Not to scale



Floor plan produced in accordance with RICS Property Measurement 2nd Edition, incorporating International Property Measurement Standards (IPMS2 Residential). © nichecom 2026.
Produced for Cooper and Tanner. REF: 1401687

WEDMORE OFFICE
telephone 01934 713296
Providence House, The Borough, Wedmore, Somerset BS28 4EG
wedmore@cooperandtanner.co.uk

**COOPER
AND
TANNER**



Important Notice: These particulars are set out as a general outline only for the guidance of intended purchasers and do not constitute, nor constitute part of, an offer or contract. All descriptions, dimensions, reference to condition and necessary permissions for use and occupation, warranties and other details are given without responsibility and any intending purchasers should not rely on them as statements or representations of fact but must satisfy themselves by inspection or otherwise as to the correctness of each of them.